

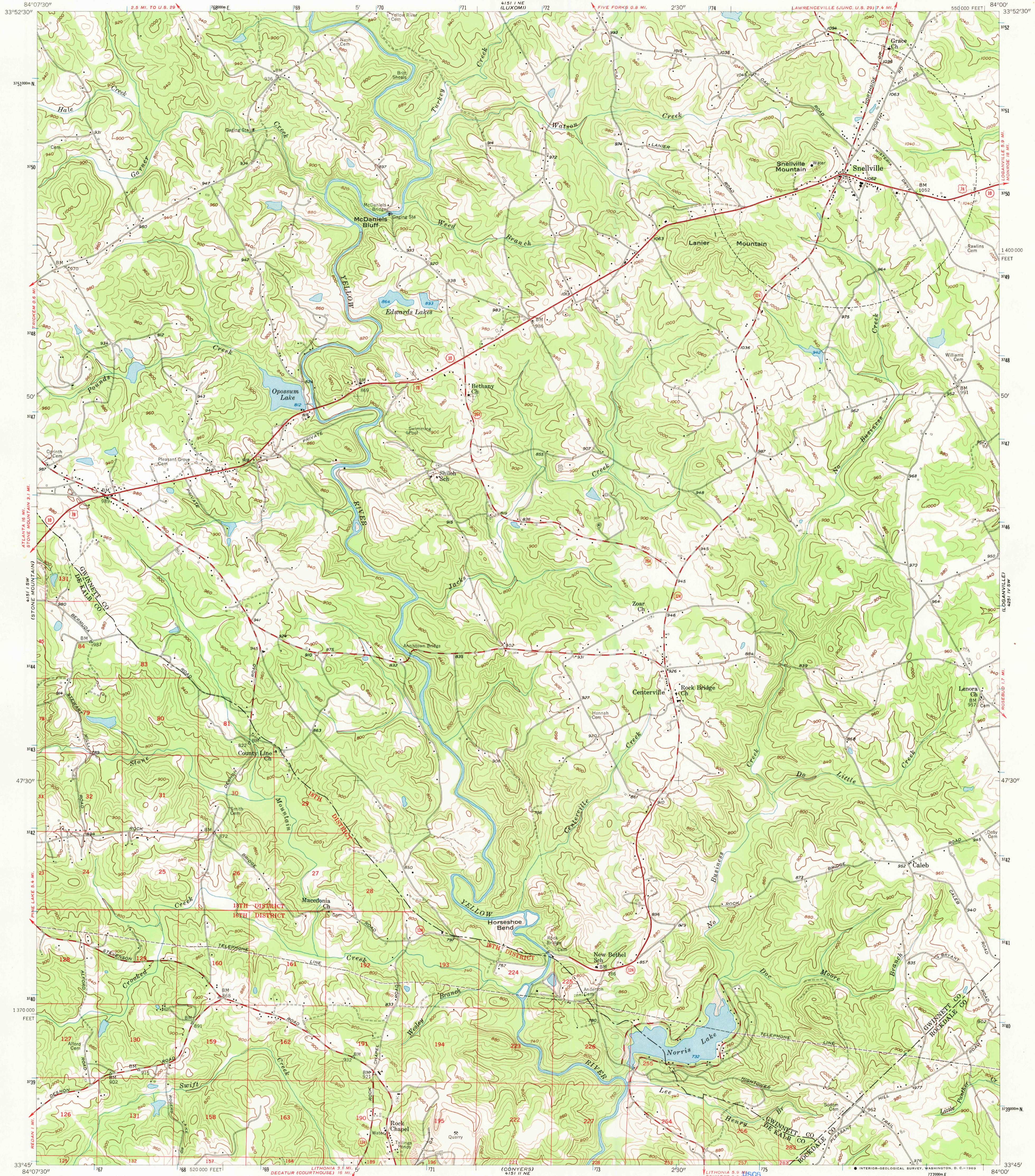
441 1 NW (NORANCEVILLE)

UNITED STATES
DEPARTMENT OF THE INTERIOR
GEOLOGICAL SURVEY

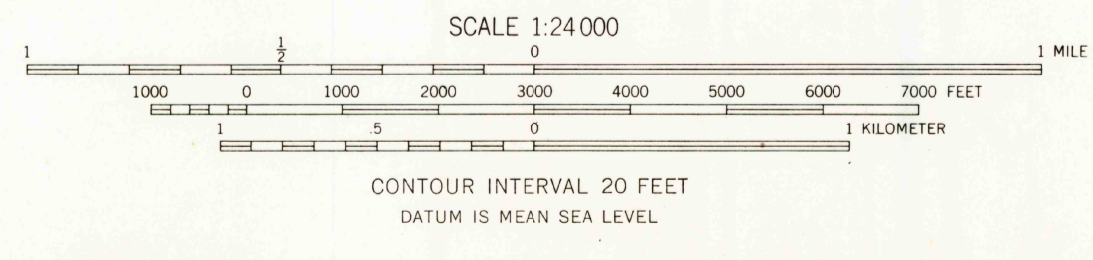
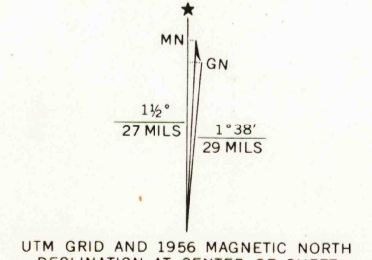
DE KALB COUNTY
BOARD OF COUNTY COMMISSIONERS

SNELLVILLE QUADRANGLE
GEORGIA
7.5 MINUTE SERIES (TOPOGRAPHIC)

441 1 NW (LAWRENCEVILLE)



Mapped, edited, and published by the Geological Survey
Control by USGS, USC&GS, and Georgia Geodetic Survey
Topography from aerial photographs by Kelsch plottor
Aerial photographs taken 1955. Field check 1956
Polyconic projection. 1927 North American datum
10,000-foot grid based on Georgia coordinate system,
west zone. 1,000-meter Universal Transverse Mercator
grid ticks, zone 16, shown in blue
Land lines and De Kalb county line from information supplied by
De Kalb County Department of Planning



ROAD CLASSIFICATION

Heavy-duty	Light-duty
Medium-duty	Unimproved dirt
U.S. Route	State Route

U.S.G.S.
FILE COPY
TOPOGRAPHIC DIVISION

SNELLVILLE, GA.
N3345-W8400/7.5
1956
AMS 4151 I SE-SERIES V845

THIS MAP COMPLIES WITH NATIONAL MAP ACCURACY STANDARDS
FOR SALE BY U.S. GEOLOGICAL SURVEY, WASHINGTON, D.C. 20242
A FOLDER DESCRIBING TOPOGRAPHIC MAPS AND SYMBOLS IS AVAILABLE ON REQUEST

2530

APR 21 1969