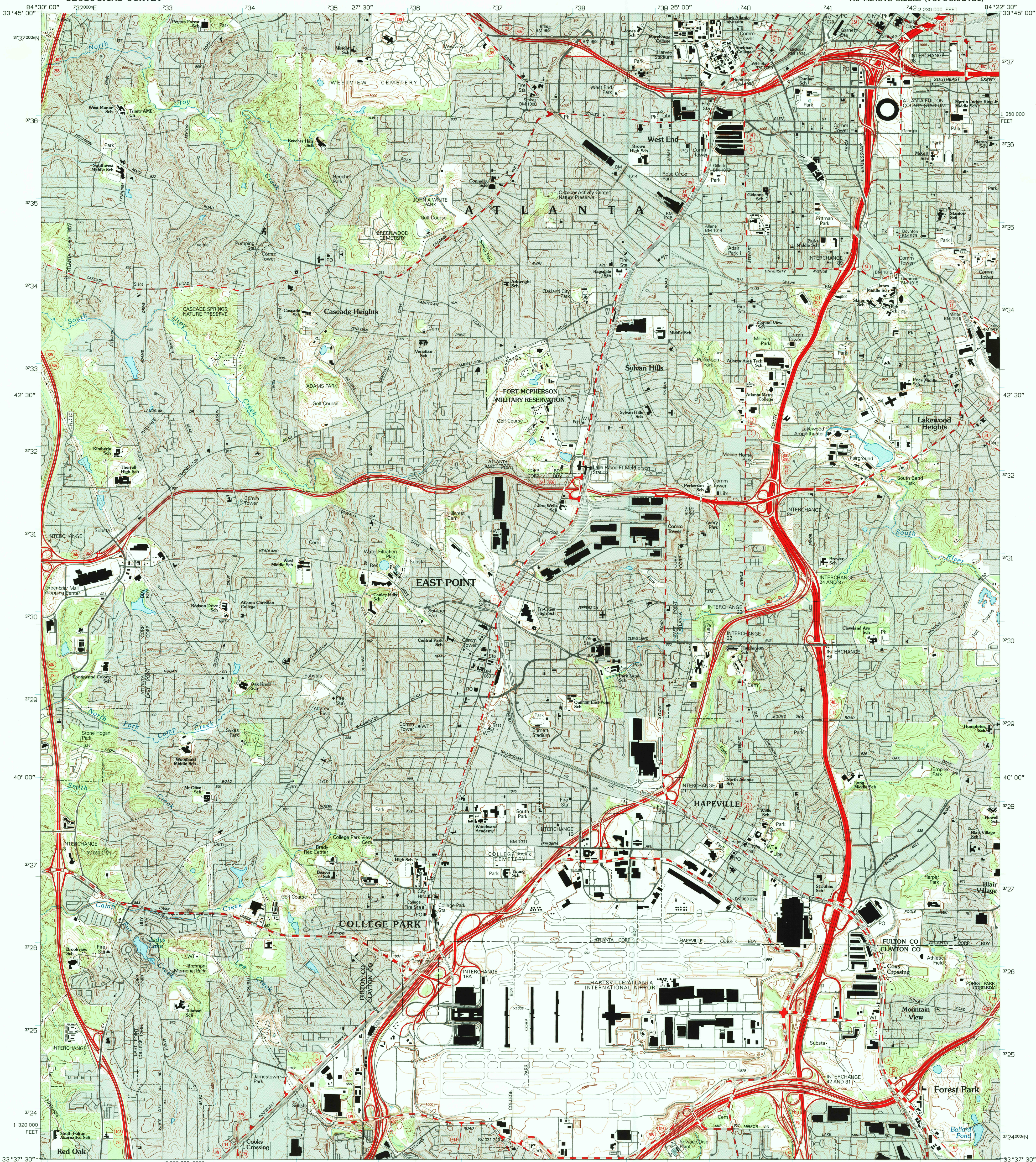
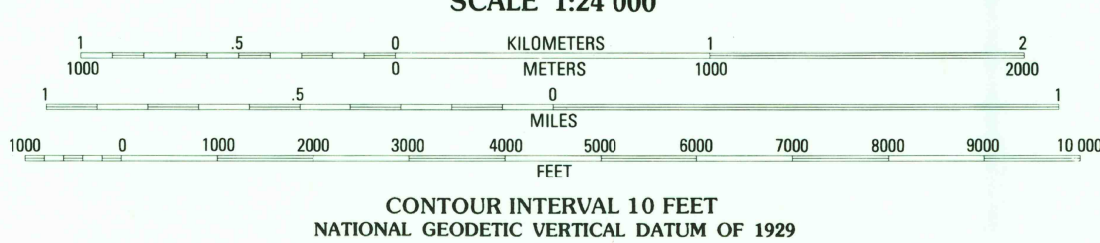
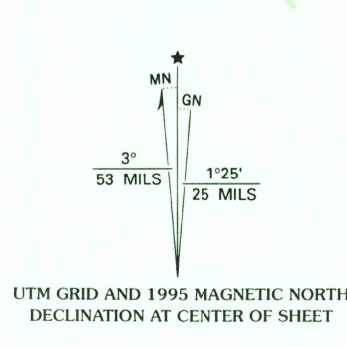


UNITED STATES  
DEPARTMENT OF THE INTERIOR  
GEOLOGICAL SURVEY

SOUTHWEST ATLANTA QUADRANGLE  
GEORGIA  
7.5 MINUTE SERIES (TOPOGRAPHIC)



Produced by the United States Geological Survey  
Compiled from imagery dated 1993 and other sources  
Field checked 1990. Map edited 1995  
North American Datum of 1983 (NAD 83). Projection and  
blue 1000-meter grid ticks: Universal Transverse Mercator, zone 16  
10 000-foot ticks: Georgia Coordinate System of 1983 (west zone)  
North American Datum of 1927 (NAD 27) is shown by dashed  
corner ticks. The values of the shift between NAD 83 and NAD 27  
for 7.5-minute intersections are obtainable from National Geodetic  
Survey NADCON software.  
There may be private inholdings within the boundaries of  
the National or State reservations shown on this map



THIS MAP COMPLIES WITH NATIONAL MAP ACCURACY STANDARDS  
FOR SALE BY U.S. GEOLOGICAL SURVEY  
DENVER, COLORADO 80225, OR RESTON, VIRGINIA 22092  
A FOLDER DESCRIBING TOPOGRAPHIC MAPS AND SYMBOLS IS AVAILABLE ON REQUEST

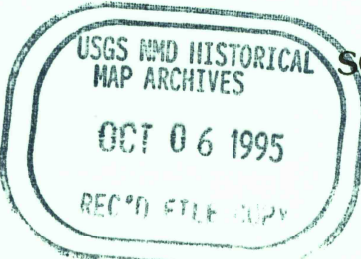


QUADRANGLE LOCATION

1	2	3	1 Mableton
4	5	2 Northwest Atlanta	
6	7	3 Northeast Atlanta	
		4 Ben Hill	
		5 Southeast Atlanta	
		6 Fairburn	
		7 Riverdale	
		8 Jonesboro	

ADJOINING 7.5 QUADRANGLE NAMES

ROAD CLASSIFICATION  
Primary highway, hard surface ..... Light-duty road, hard or improved surface .....  
Secondary highway, hard surface ..... Unimproved road .....  
Interstate Route U. S. Route State Route



SOUTHWEST ATLANTA, GA  
33084-F4-TF-024  
1993  
DMA 4151 III NW-SERIES V845

