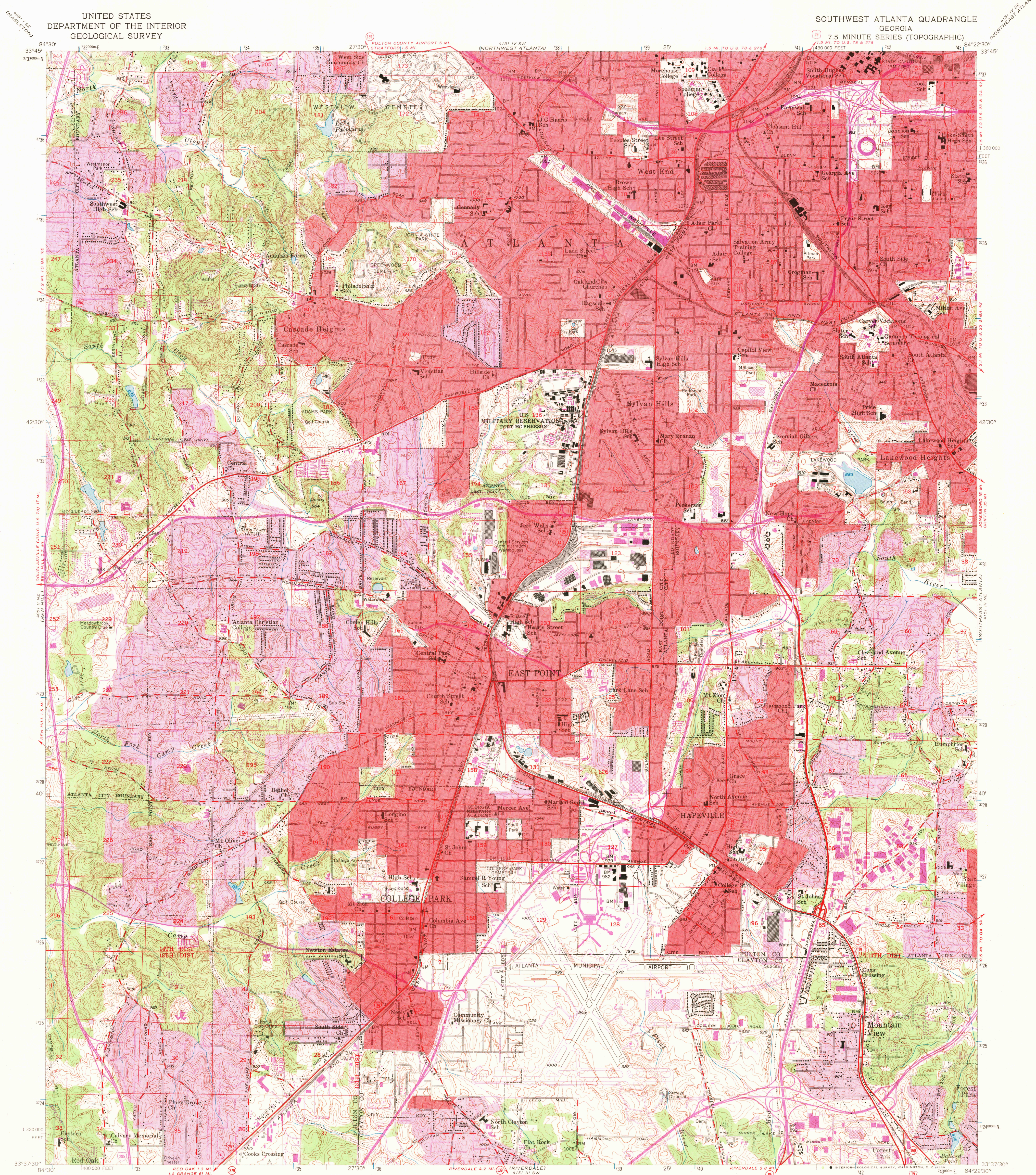


SOUTHWEST ATLANTA QUADRANGLE
GEORGIA
7.5 MINUTE SERIES (TOPOGRAPHIC)

Control by USGS, USC&GS, Georgia Geodetic Survey,
and City of Atlanta

Topography from aerial photographs by stereoplanigraph
Aerial photographs taken 1952. Field check 1954

Polyconic projection. 1927 North American datum
10,000-foot grid based on Georgia coordinate system, west zone

1000-meter Universal Transverse Mercator grid ticks,
zone 16, shown in blue

Red tint indicates areas in which only landmark buildings are shown

Land lines from information supplied by
Atlanta-Fulton County Joint Planning Board

Revisions shown in purple compiled from aerial photographs taken 1968. This information not field checked

Purple tint indicates extension of urban areas

SCALE 1:24000

A horizontal number line is shown with tick marks every 0.1 units. The tick mark for 0.5 is shaded.

CONTOUR INTERVAL 10 FEET

DATUM IS MEAN SEA LEVEL

THIS MAP COMPLIES WITH NATIONAL MAP ACCURACY STANDARDS FOR LARGE SCALE MAPS

SALE BY U. S. GEOLOGICAL SURVEY, WA
DESCRIBING TOPOGRAPHIC MAPS AND SYMBOLS

USGS
Historical File
Topographic Division

GEORGIA

GEORGIA

QUADRANGLE LOCATION 

TOPIC

TOPO

ROAD CLASSIFICATION

Heavy-duty Light-duty

Medium-duty Unimproved

 Interstate Route U. S. Route

U.S.G.S

SOUTHWEST ATLANTA
(FORMERLY EAST POINTE)

COPY
 N3337.5—W8422.5

GRAPHIC DIVISION

AMS 4151 III NW-SERI

SOUTHWEST ATLANTA, GA.
(FORMERLY EAST POINT)

N3337.5—W8422.5/7.5

1954
PHOTOREVISED 1968

AMS 4151 III NW-SERIES V845

5050 1970

JAN 14 1970