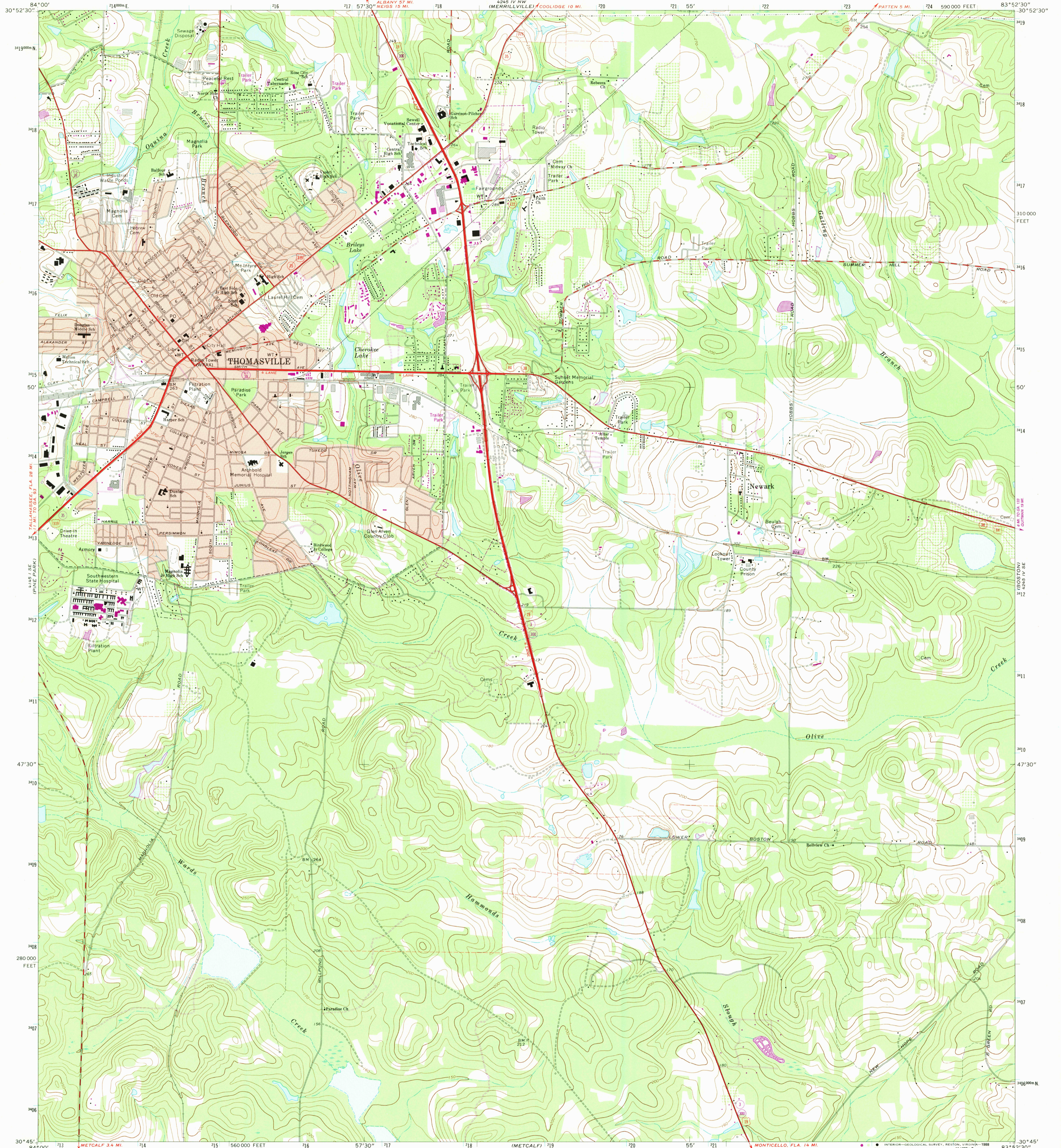


5416  
5415  
5414  
5413  
5412  
5411  
5410  
5409  
5408  
5407  
5406

UNITED STATES  
DEPARTMENT OF THE INTERIOR  
GEOLOGICAL SURVEY

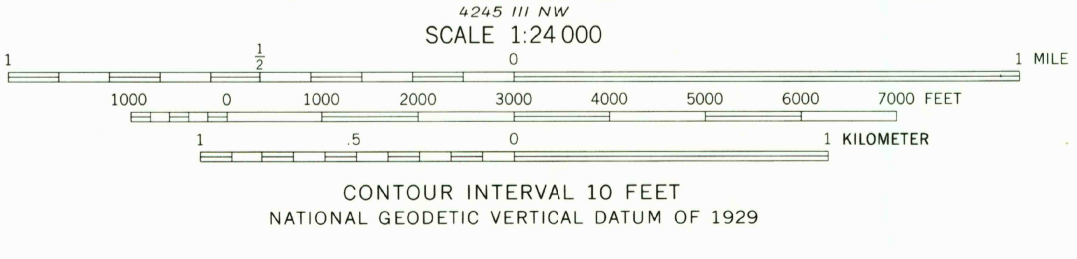
THOMASVILLE QUADRANGLE  
GEORGIA—THOMAS CO.  
7.5 MINUTE SERIES (TOPOGRAPHIC)  
SW/4 THOMASVILLE 15' QUADRANGLE

5416  
5415  
5414  
5413  
5412  
5411  
5410  
5409  
5408  
5407  
5406



Mapped, edited, and published by the Geological Survey  
Control by USGS, NOS/NOAA, and Georgia Geodetic Survey  
Topography by photogrammetric methods from aerial photographs taken 1974. Field checked 1975  
Projection and 10,000-foot grid ticks: Georgia coordinate system, west zone (transverse Mercator)  
1000-meter Universal Transverse Mercator grid ticks, zone 17, shown in blue. 1927 North American Datum  
To place on the predicted North American Datum 1983 move the projection lines 18 meters south and 11 meters west as shown by dashed corner ticks  
Fine red dashed lines indicate selected fence and field lines where generally visible on aerial photographs. This information is unchecked  
Red tint indicates areas in which only landmark buildings are shown

Revisions shown in purple and woodland compiled in cooperation with State of Georgia agencies from aerial photographs taken 1983 and other sources. This information not field checked  
Map edited 1988



ROAD CLASSIFICATION  
Primary highway, hard surface ———— Light-duty road, hard or improved surface ————  
Secondary highway, hard surface ———— Unimproved road ————  
Interstate Route ———— U.S. Route ———— State Route ————



USGS NMD HISTORICAL MAP  
APR 23 1989  
REC'D FILE COPY

THOMASVILLE, GA.  
SW/4 THOMASVILLE 15' QUADRANGLE  
30083-G8-TF-024  
1975  
PHOTOREVISED 1988  
DMA 4245 IV SW—SERIES 7845

THIS MAP COMPLIES WITH NATIONAL MAP ACCURACY STANDARDS  
FOR SALE BY U.S. GEOLOGICAL SURVEY  
DENVER, COLORADO 80225 OR RESTON, VIRGINIA 22092  
A FOLDER DESCRIBING TOPOGRAPHIC MAPS AND SYMBOLS IS AVAILABLE ON REQUEST