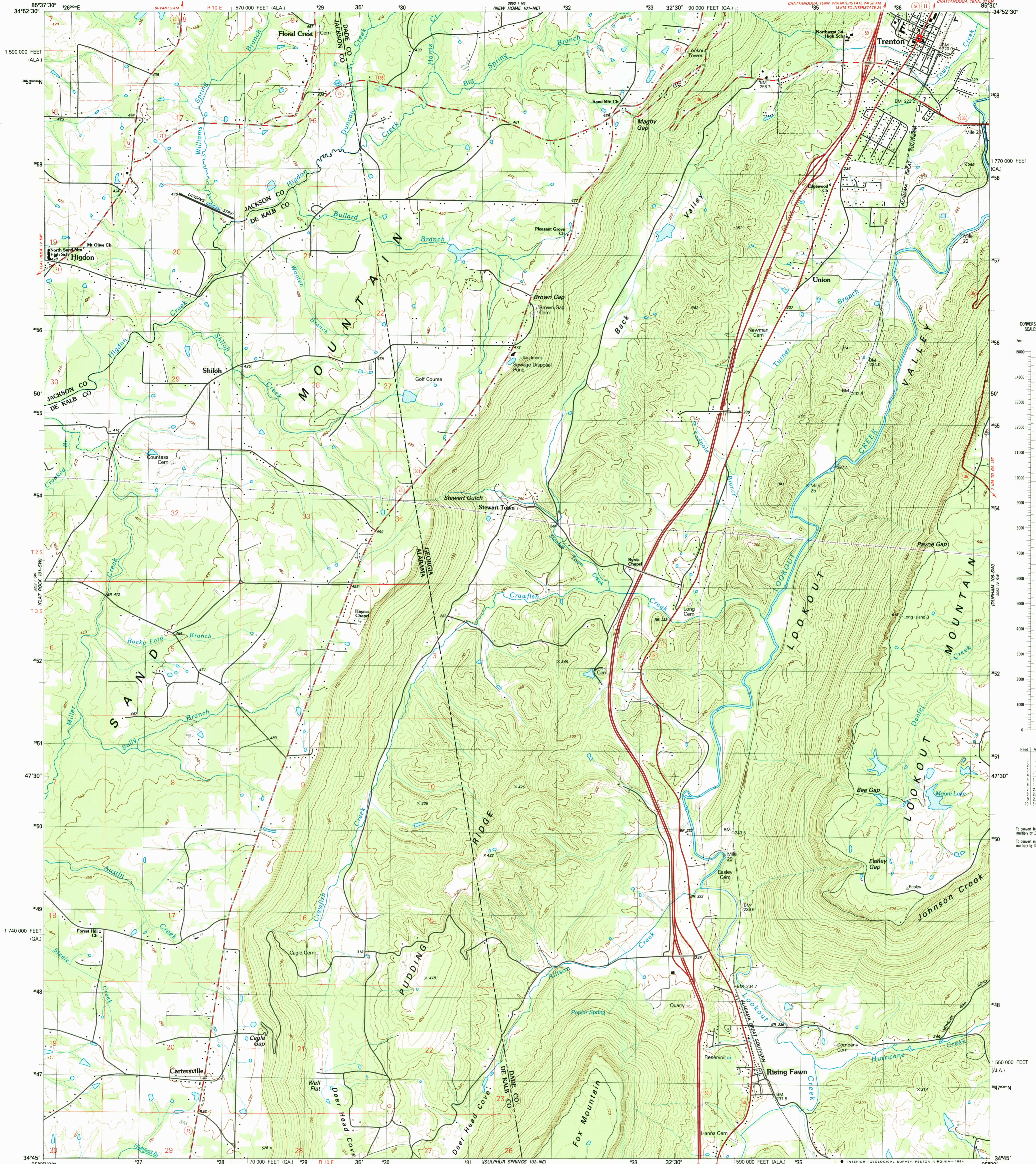


UNITED STATES
DEPARTMENT OF THE INTERIOR
GEOLOGICAL SURVEY

STATE OF GEORGIA
DEPARTMENT OF NATURAL RESOURCES
GEORGIA GEOLOGIC SURVEY

TRENTON QUADRANGLE
GEORGIA-ALABAMA
7.5 MINUTE SERIES (TOPOGRAPHIC) 101-SE



CONVERSION SCALES

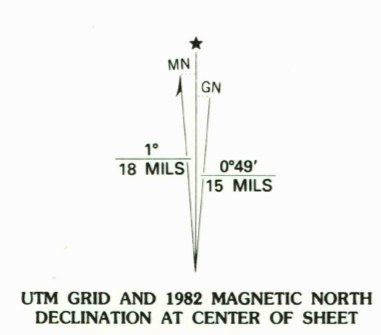
Feet	Meters
15000	4500
14000	4000
13000	3500
12000	3000
11000	2500
10000	2000
9000	1500
8000	1000
7000	500
6000	0
5000	0
4000	0
3000	0
2000	0
1000	0
0	0

Feet Meters

1	3048
2	6096
3	9144
4	12192
5	15240
6	18288
7	21336
8	24384
9	27432
10	30480

To convert feet to meters multiply by 3048
To convert meters to feet multiply by 3.2808

Produced by the United States Geological Survey
Control by USGS, NOS/NOAA, and Tennessee Valley Authority
Compiled by photogrammetric methods from aerial photographs taken 1975. Field checked 1975. Map edited 1982
Supersedes USGS-TVA map dated 1946
Projection: Georgia coordinate system, west zone (transverse Mercator). 10,000-foot grid ticks based on Georgia coordinate system, west zone, and Alabama coordinate system, east zone 1000-meter Universal Transverse Mercator grid, zone 16 1927 North American Datum.
To place on the predicted North American Datum 1983 move the projection lines 7 meters south and 3 meters west as shown by dashed corner ticks
Fine red dashed lines indicate selected fence and field lines where generally visible on aerial photographs. This information is unchecked



SCALE 1:24 000
KILOMETERS
METERS
MILES
FEET
CONTOUR INTERVAL 10 METERS
NATIONAL GEODETIC VERTICAL DATUM OF 1929
CONTROL ELEVATIONS SHOWN TO THE NEAREST 0.1 METER
OTHER ELEVATIONS SHOWN TO THE NEAREST METER
THIS MAP COMPLIES WITH NATIONAL MAP ACCURACY STANDARDS
FOR SALE BY U. S. GEOLOGICAL SURVEY, RESTON, VIRGINIA 22092.
AND U. S. TENNESSEE VALLEY AUTHORITY, CHATTANOOGA, TENN. 37401, OR KNOXVILLE, TENN. 37902
A FOLDER DESCRIBING TOPOGRAPHIC MAPS AND SYMBOLS IS AVAILABLE ON REQUEST



ROAD CLASSIFICATION (TVA 101-SE)
Primary highway, hard surface Light-duty road, hard or improved surface
Secondary highway, hard surface Unimproved road
Interstate Route U. S. Route State Route
TRENTON, GA. - ALA.
34085-G5-TM-024
1982
DMA 3853 1 SE - SERIES V845