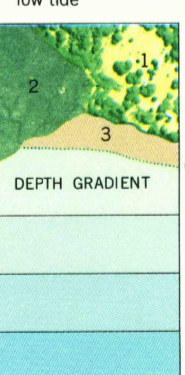


Feet Meters

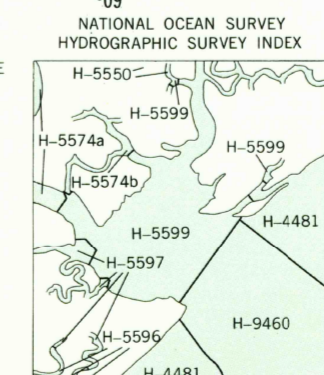
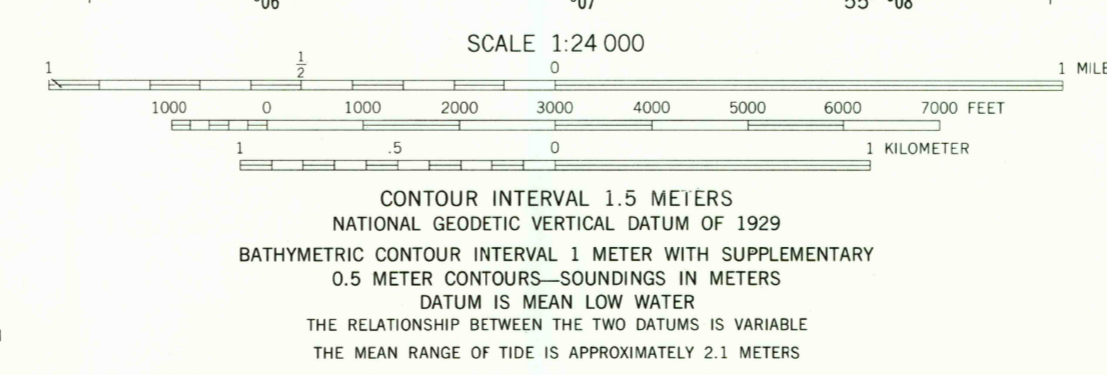
1	3048
2	6096
3	9144
4	12192
5	15240
6	18288
7	21336
8	24384
9	27432
10	30480

To convert feet to meters multiply by 3.048
To convert meters to feet multiply by 3.2808

1. Dryland
2. Wetlands (May be partially submerged at mean high tide)
3. Exposed at mean low tide



Mapped, edited and published by the Geological Survey and the National Ocean Survey
Control by USGS and NOS/NOAA
Orthophotomaps prepared by the Geological Survey from aerial photographs taken April 18, 1974. Topography by plane-table surveys 1957, revised from aerial photographs taken 1974. Field checked 1975. Map edited 1978
Supersedes topographic map dated 1957
Bathymetry compiled by the National Ocean Survey from tide-coordinated hydrographic surveys
Soundings compiled from NOS 11512
This information is not intended for navigational purposes
Mean low water (dotted) line and mean high water (solid) line compiled by NOS from tide-coordinated photography dated 1971, 1973, 1974. Apparent shoreline (outer edge of vegetation) shown by photogrammetry
Projection and 10,000-foot grid ticks: Georgia coordinate system, east zone (transverse Mercator)
1000-meter Universal Transverse Mercator grid, zone 17
1927 North American datum
There may be private inholdings within the boundaries of the National or State reservations shown on this map



- ROAD CLASSIFICATION
- Primary highway, hard surface
 - Secondary highway, hard surface
 - Trails
 - Interstate Route
 - U. S. Route
 - State Route
 - Light-duty road, hard or improved surface
 - Unimproved road

WASSAW SOUND, GA.
N3152.5—W8052.5/7.5
1978
AMS 4847 IV NW—SERIES V8450

HYDROGRAPHIC SURVEY INFORMATION

Survey Number	Survey Date	Survey Scale	Survey Line Spacing (Cross Miles)
H-4481	1926	1:10,000	01-10
H-5550	1934	1:10,000	01-06
H-5574a	1934	1:10,000	01-06
H-5574b	1934	1:10,000	01-06
H-5596	1934	1:10,000	01-10
H-5597	1934	1:10,000	01-14
H-5599	1934	1:20,000	02-11
H-9460	1974	1:20,000	20-50

BASE MAP COMPLIES WITH NATIONAL MAP ACCURACY STANDARDS
BATHYMETRIC SURVEY DATA COMPLIES WITH INTERNATIONAL HYDROGRAPHIC ORGANIZATION (IHO) SPECIAL PUBLICATION 44 ACCURACY STANDARDS AND/OR STANDARDS USED AT THE DATE OF THE SURVEY
FOR SALE BY THE GEOLOGICAL SURVEY, RESTON, VIRGINIA 22082 AND NATIONAL OCEAN SURVEY, ROCKVILLE, MARYLAND 20852
A FOLDER DESCRIBING TOPOGRAPHIC MAPS AND SYMBOLS AVAILABLE ON REQUEST

USGS
Historical File
Topographic Division
JAN 12 1979

6500