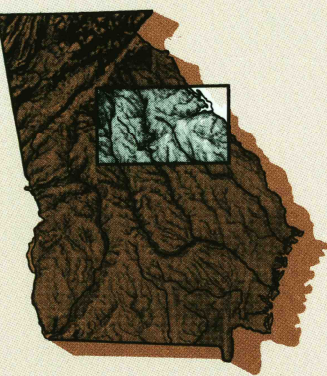


Athens

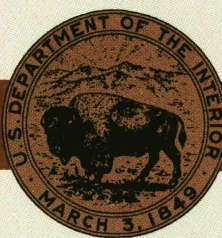
GEORGIA-SOUTH CAROLINA

1:250 000-scale *metric*
topographic map



1 X 2 DEGREE QUADRANGLE
SHOWING

- Contours and elevations in meters
- Highways, roads and other manmade structures
- Water features
- Woodland areas
- Geographic names



GEOLOGICAL SURVEY

1988

Produced by the United States Geological Survey
Compiled from 1:100 000-scale topographic maps dated 1980-81. Planimetry revised from aerial photographs taken 1981-82 and other source data. Revised information not field checked. Map edited 1988. Superimposed map dated 1953.
Projection and 10 000-meter grid, zone 17, Universal Transverse Mercator
100 000-foot grid ticks based on Georgia coordinate system, east and west zones and South Carolina coordinate system, north zone
1927 North American Datum
To place on the predicted North American Datum 1983, move the projection lines 12 meters south and 12 meters west
There may be private inholdings within the boundaries of the National or State reservations shown on this map

1988 MAGNETIC DECLINATION FROM TRUE NORTH VARIES FROM 21° (64 MILS) WESTERLY FOR THE CENTER OF THE WEST EDGE TO 4° (11 MILS) WESTERLY FOR THE CENTER OF THE EAST EDGE. MEAN ANNUAL CHANGE IS 8.1 WESTERLY

CONTOUR INTERVAL 20 METERS
NATIONAL GEODETIC VERTICAL DATUM OF 1929
ELEVATIONS SHOWN TO THE NEAREST METER

THIS MAP COMPLIES WITH NATIONAL MAP ACCURACY STANDARDS

CONVERSION TABLE				ADJOINING MAPS		
Meters	Feet	Feet	Meters	1	2	3
1	3.2808	3	3048			
2	6.5617	2	6096			
3	9.8425	3	9144			
4	13.1234	4	12192	4		5
5	16.4042	5	15240			
6	19.6850	6	18288			
7	22.9659	7	21336	6	7	8
8	26.2467	8	24384			
9	29.5275	9	27432			
10	32.8084	10	30480			
To convert meters to feet multiply by 3.2808						
To convert feet to meters multiply by 0.3048						
				1 Rome		
				2 Greenville		
				3 Spartanburg		
				4 Atlanta		
				5 Augusta		
				6 Phenix City		
				7 Macon		
				8 Savannah		

FOR SALE BY U. S. GEOLOGICAL SURVEY
DENVER, COLORADO 80225, OR RESTON, VIRGINIA 22092

Topographic Map Symbols

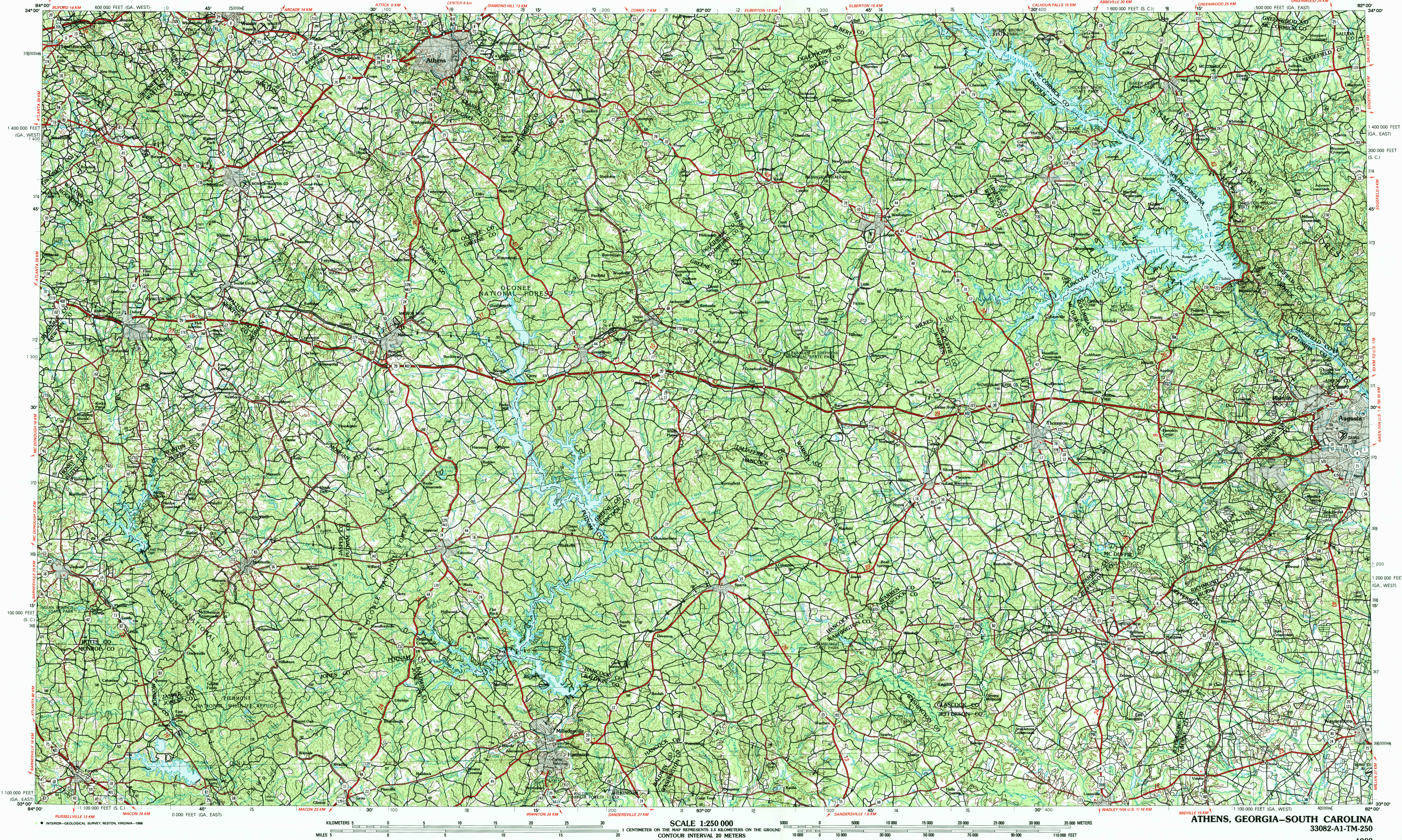
Figures in red denote approximate distances in kilometers between markers

Dual highway, interchange	
Primary highway, hard surface	
Secondary highway, hard surface	
Light duty road, hard or improved surface	
Other road, trail	
Route marker: Interstate, U. S., State	
Bridge, overpass, underpass	
Tunnel: road, railroad	
Railroad: standard gauge; single, multiple track	
Railroad: narrow gauge; single, multiple track	
Buildup area, locality, elevation	
Airport: runway pattern known; unknown	
National boundary	
State boundary	
County boundary	
National or State reservation boundary	
Land grant boundary	
U. S. public lands survey: range, township (surveyed)	
U. S. public lands survey: range, township (protected)	
Powerline; pipeline: aboveground, underground	
Dam; landmark feature; landmark building	
Well: water; other spring; tank	
Cave; mine, quarry; oil platform	
Landmark area; landmark railroad	
Distorted surface: strip mine, lava; sand	
Contours: index; intermediate; supplementary	
Bathymetric contours: index; primary	
Bathymetric contours: intermediate; supplementary	
Stream, lake, perennial; intermittent	
Rapids, large and small; falls, large and small	
Land subject to controlled inundation: marsh, swamp	
Woodland; orchard, vineyard	
Mangrove	

A pamphlet describing topographic maps is available on request

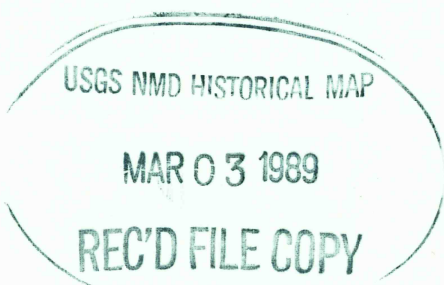
ATHENS, GEORGIA-SOUTH CAROLINA

1 X 2 DEGREE SERIES (TOPOGRAPHIC)



ATHENS, GEORGIA-SOUTH CAROLINA
33082-A1-TM-250

1988



● INTERIOR—GEOLOGICAL SURVEY, RESTON, VIRGINIA—1988

SCALE 1:250 000
1 CENTIMETER ON THE MAP REPRESENTS 2.5 KILOMETERS ON THE GROUND
CONTOUR INTERVAL 20 METERS