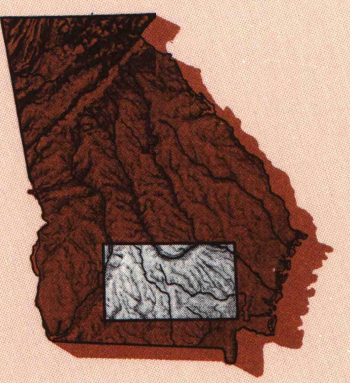


Waycross GEORGIA

1:250 000-scale metric
topographic map



1 X 2 DEGREE QUADRANGLE
SHOWING

- Contours and elevations in meters
- Highways, roads and other manmade structures
- Water features
- Woodland areas
- Geographic names



GEOLOGICAL SURVEY

1988

Produced by the United States Geological Survey
 Compiled from USGS 1:100 000-scale maps dated 1978-1981
 Planimetry revised from aerial photographs taken 1983-84 and other sources. Supersedes map dated 1953. Revised information not field checked. Map edited 1988.
 Projection and 10,000-meter grid, zone 17; Universal Transverse Mercator
 100 000-foot grid ticks based on Georgia coordinate system, east and west zones
 1927 North American Datum
 To place on the predicted North American Datum 1983 move the projection lines 17 meters south and 13 meters west
 There may be private inholdings within the boundaries of the National or State reservations shown on this map

1988 MAGNETIC DECLINATION FROM TRUE NORTH VARIES FROM 2° (6 MILES) WESTERLY FOR THE CENTER OF THE WEST EDGE TO 1° (13 MILES) WESTERLY FOR THE CENTER OF THE EAST EDGE. MEAN ANNUAL CHANGE IS 8.2' WESTERLY

CONTOUR INTERVAL 20 METERS WITH SUPPLEMENTARY CONTOURS AT 10 METER INTERVALS
 NATIONAL GEODESIC VERTICAL DATUM OF 1929
 ELEVATIONS SHOWN TO THE NEAREST METER

THIS MAP COMPLIES WITH NATIONAL MAP ACCURACY STANDARDS

Meters	Feet	Feet	Meters
1	3.2808	1	3048
2	6.5617	2	6096
3	9.8425	3	9144
4	13.1234	4	12192
5	16.4042	5	15240
6	19.6850	6	18288
7	22.9659	7	21336
8	26.2467	8	24384
9	29.5275	9	27432
10	32.8084	10	30480

To convert meters to feet multiply by 3.2808
 To convert feet to meters multiply by 0.3048

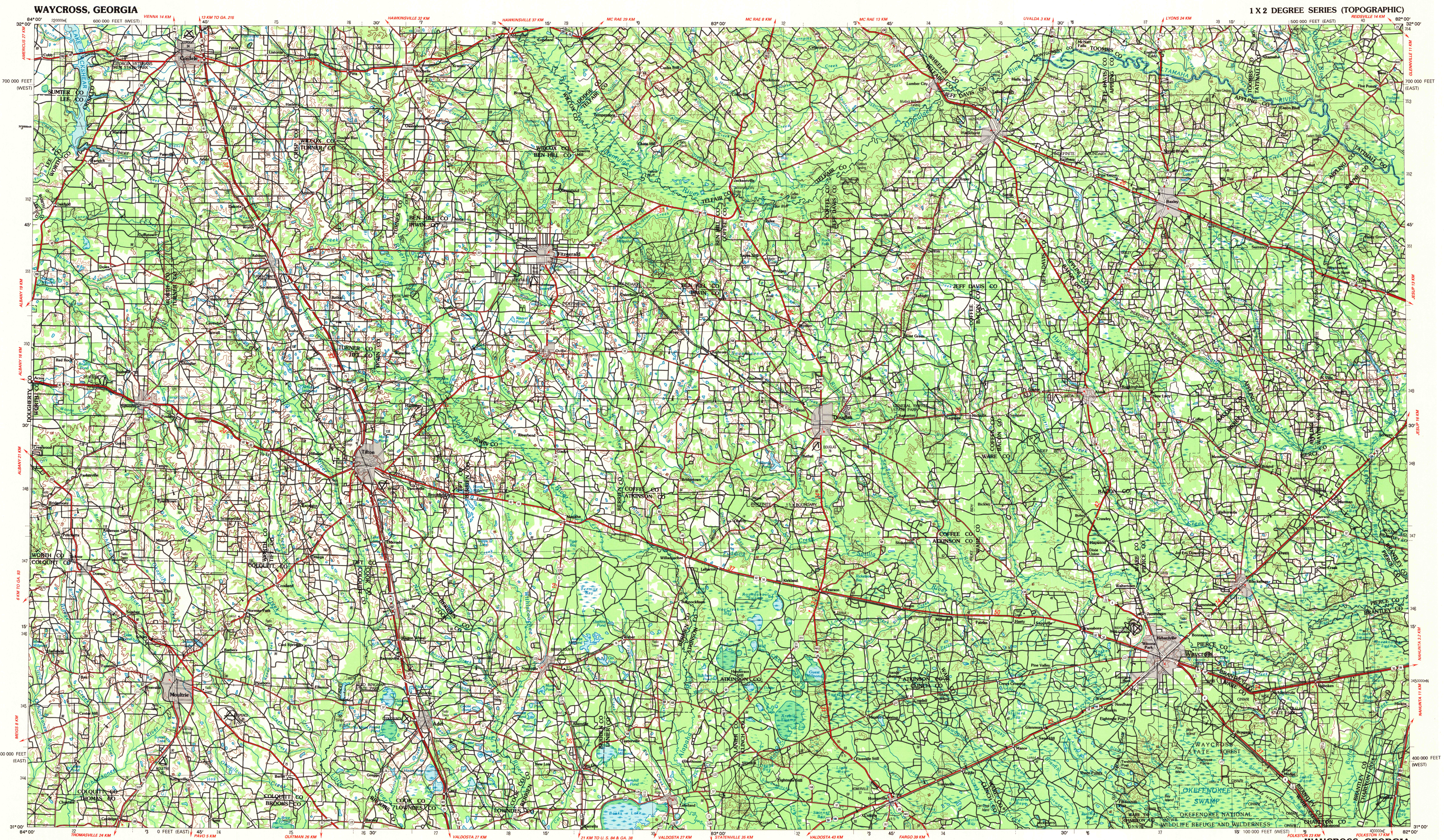
ADJOINING MAPS			
1	2	3	
4		5	
6	7	8	

1 Phenix City
 2 Macon
 3 Savannah
 4 Dothan
 5 Brunswick
 6 Tallahassee
 7 Valdosta
 8 Jacksonville

FOR SALE BY U.S. GEOLOGICAL SURVEY
 DENVER, COLORADO 80225 OR RESTON, VIRGINIA 22092

Topographic Map Symbols

- Figures in red denote approximate distances in kilometers between markers
- Dual highway, interchange
 - Primary highway, hard surface
 - Secondary highway, hard surface
 - Light duty road, hard or improved surface
 - Other road, trail
 - Roam marker: Interstate, U.S. State
 - Bridge, overpass, underpass
 - Tunnel: road, railroad
 - Railroad: standard gauge, single, multiple track
 - Railroad: narrow gauge, single, multiple track
 - Built-up area, locality, elevation
 - Airport: runway pattern known, unknown
 - National boundary
 - State boundary
 - County boundary
 - National or State reservation boundary
 - Land grant boundary
 - U.S. public lands survey: range, township (surveyed)
 - U.S. public lands survey: range, township (contracted)
 - Poweline; pipeline: aboveground, underground
 - Dem: landmark feature; landmark building
 - Well: water, other; spring; tank
 - Cave; mine; quarry; oil platform
 - Landmark area; landmark rockmark
 - Disturbed surface: strip mine, base sand
 - Contour: index; intermediate; supplementary
 - Bathymetric contour: index; primary
 - Bathymetric contour: intermediate; supplementary
 - Stream, lake: perennial; intermittent
 - Rapids, large and small; falls, large and small
 - Land subject to controlled inundation: marsh, swamp
 - Woodland: oakland, vineyard
 - Mangrove



SCALE 1:250 000
 1 CENTIMETER ON THE MAP REPRESENTS 2.5 KILOMETERS ON THE GROUND
 CONTOUR INTERVAL 20 METERS
 SUPPLEMENTARY CONTOUR INTERVAL 10 METERS

G
 3700
 3250
 1156

1988