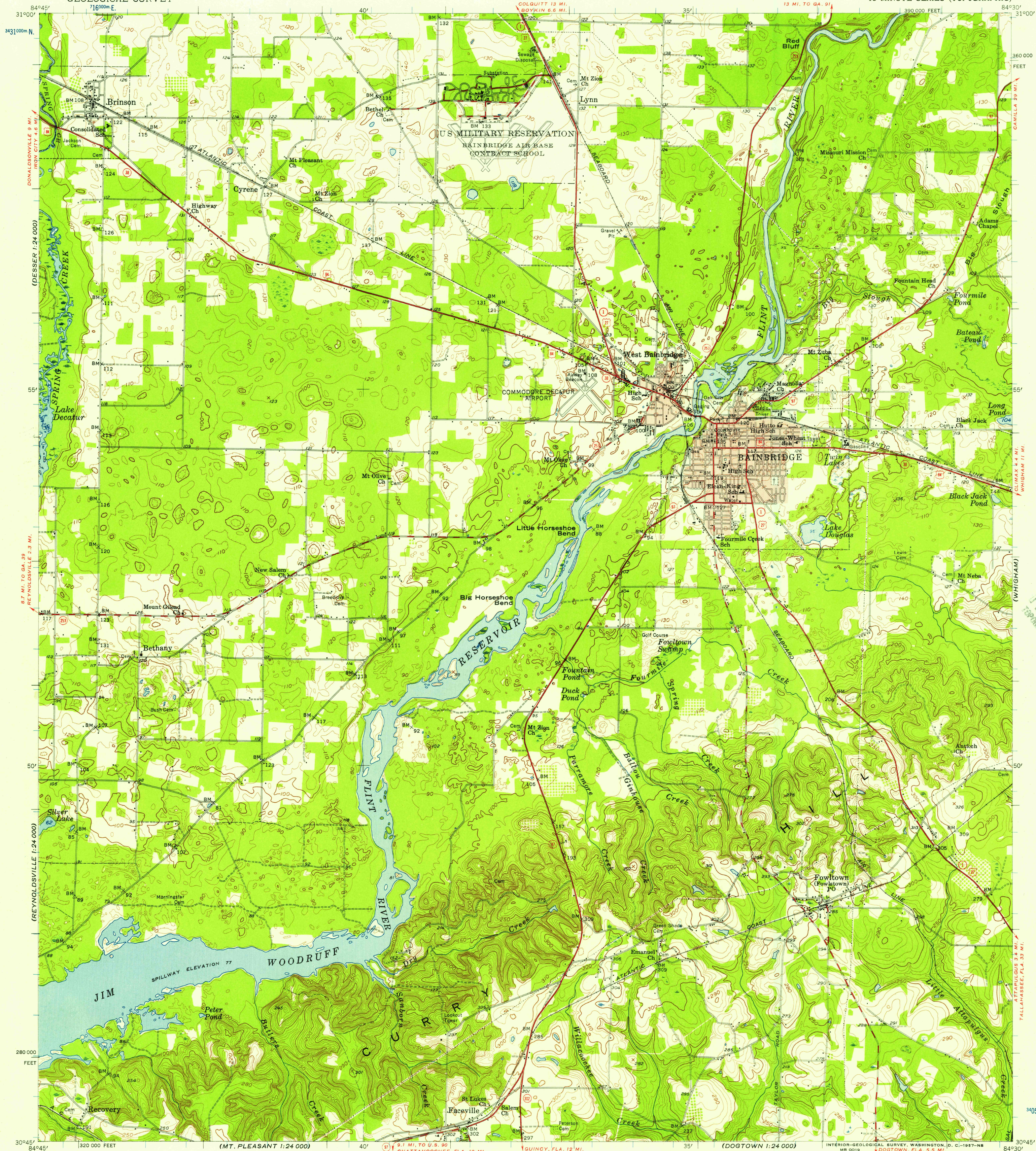


UNITED STATES
DEPARTMENT OF THE INTERIOR
GEOLOGICAL SURVEY

BAINBRIDGE QUADRANGLE
GEORGIA—DECATUR CO.
15 MINUTE SERIES (TOPOGRAPHIC)



Maped, edited, and published by the Geological Survey
Control by USGS, USC&GS, USCE, and Georgia Geodetic Survey
Culture and drainage in part compiled from aerial photographs
taken 1952. Topography by planetable surveys 1955
Polyconic projection. 1927 North American datum
10,000-foot grid based on Georgia coordinate system,
west zone
1,000-meter Universal Transverse Mercator grid ticks,
zone 16, shown in blue
Red tint indicates areas in which only
landmark buildings are shown

TRUE NORTH
MAGNETIC NORTH
APPROXIMATE MEAN
DECLINATION, 1955

SCALE 1:62,500
3000 0 3000 6000 9000 12000 15000 18000 21000 FEET
1 2 3 4 5 KILOMETERS
CONTOUR INTERVAL 10 FEET
DATUM IS MEAN SEA LEVEL

THIS MAP COMPLIES WITH NATIONAL MAP ACCURACY STANDARDS
FOR SALE BY U.S. GEOLOGICAL SURVEY, WASHINGTON 25, D.C.
A FOLDER DESCRIBING TOPOGRAPHIC MAPS AND SYMBOLS IS AVAILABLE ON REQUEST

USGS
Historical File
Topographic Division



U.S.G.S.
FILE COPY
TOPOGRAPHIC DIVISION

ROAD CLASSIFICATION
Heavy-duty ——— Light-duty ———
Medium-duty ——— Unimproved dirt ———
U.S. Route ——— State Route ———

BAINBRIDGE, GA.
N 3045—W 8430/15
1955

U.S.G.S.
FILE COPY
TOPOGRAPHIC DIVISION

OCT - 2 1957