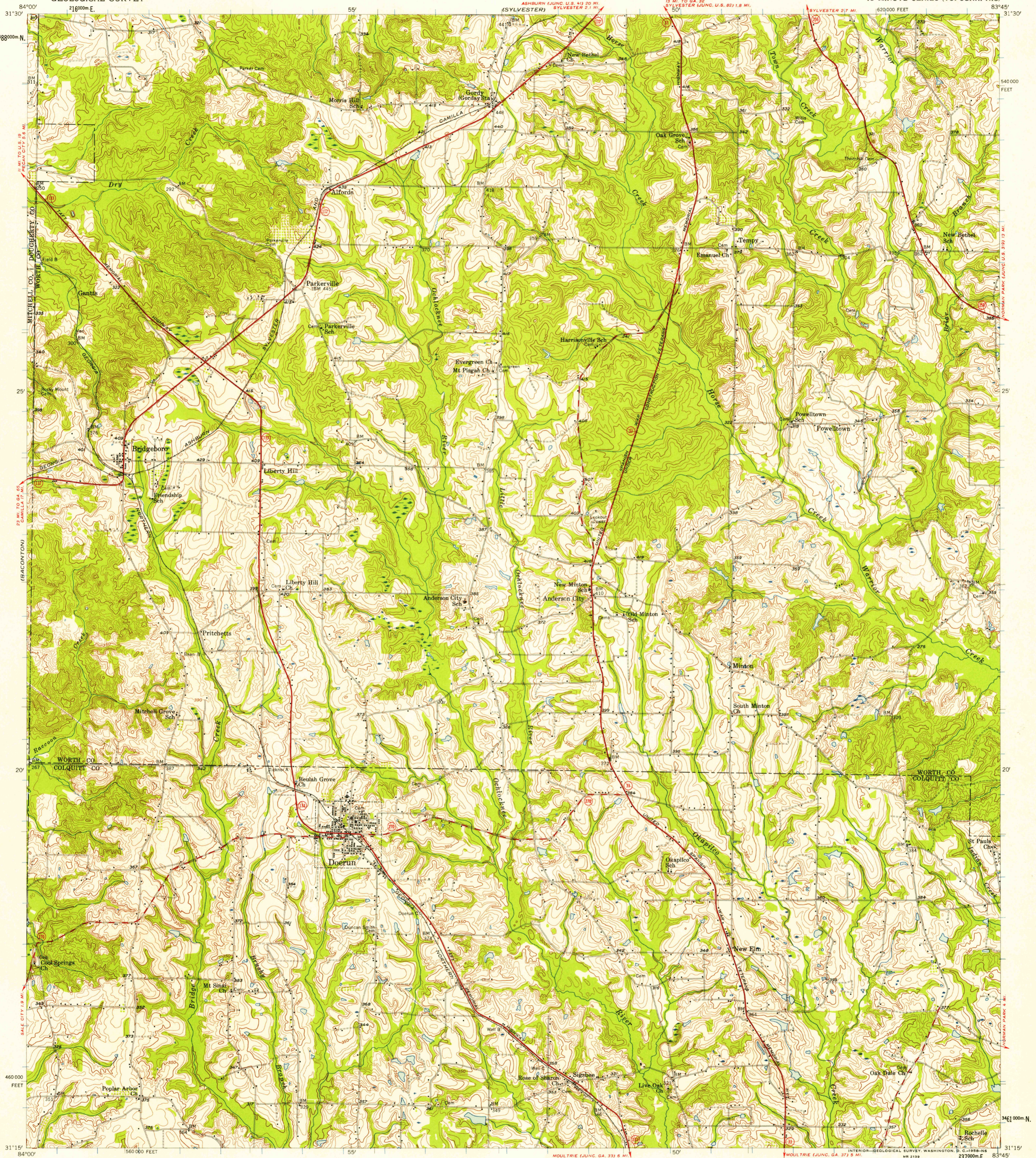


(ALBANY)

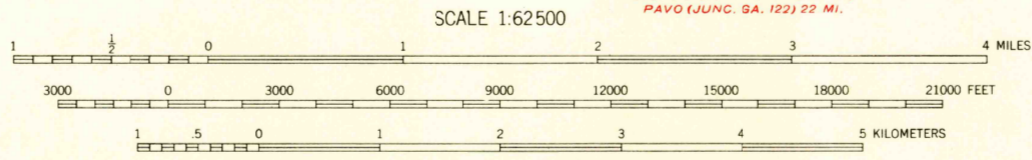
UNITED STATES  
DEPARTMENT OF THE INTERIOR  
GEOLOGICAL SURVEY

DOERUN QUADRANGLE  
GEORGIA  
15 MINUTE SERIES (TOPOGRAPHIC)



Mapped, edited, and published by the Geological Survey  
Control by USGS, USC&GS, and Georgia Geodetic Survey  
Topography from aerial photographs by photogrammetric methods  
Aerial photographs taken 1955. Field check 1956  
Polyconic projection. 1927 North American datum  
10,000-foot grid based on Georgia coordinate system, west zone  
1000-meter Universal Transverse Mercator grid ticks,  
zone 17, shown in blue

TRUE NORTH  
MAGNETIC NORTH  
APPROXIMATE MEAN  
DECLINATION, 1956



SCALE 1:62,500  
CONTOUR INTERVAL 10 FEET  
DATUM IS MEAN SEA LEVEL



ROAD CLASSIFICATION

Heavy-duty	Light-duty
Medium-duty	Unimproved dirt
State Route	

U.S.G.S.  
**FILE COPY**  
TOPOGRAPHIC DIVISION

DOERUN, GA.  
N 3115-W 8345/15  
1956

THIS MAP COMPLIES WITH NATIONAL MAP ACCURACY STANDARDS  
FOR SALE BY U.S. GEOLOGICAL SURVEY, WASHINGTON 25, D. C.  
A FOLDER DESCRIBING TOPOGRAPHIC MAPS AND SYMBOLS IS AVAILABLE ON REQUEST

APR - 7 1956  
2430