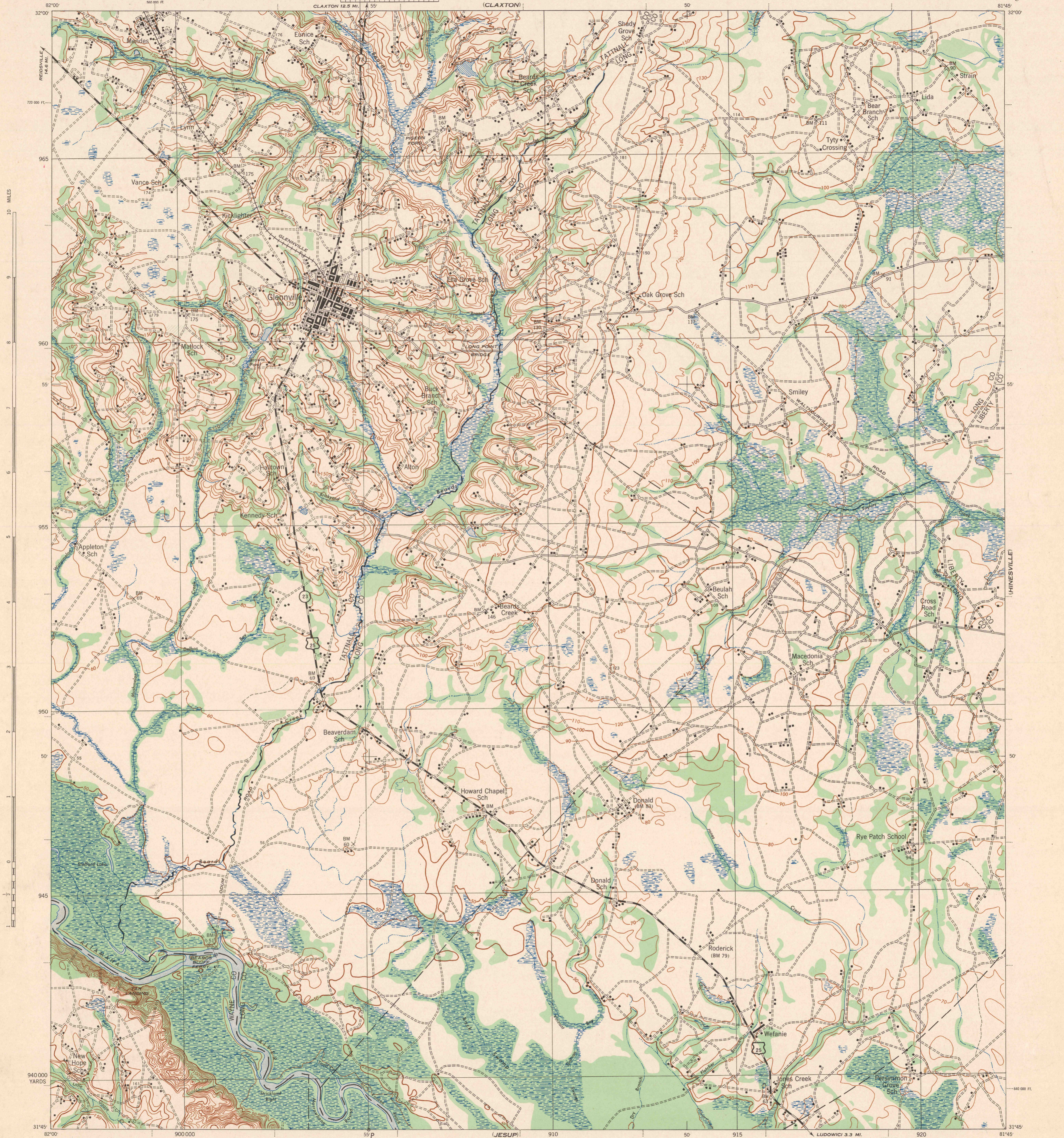


PEMBROKE



First Edition (AMS-1) 1944.
 Prepared under the direction of the Chief of Engineers, U.S. Army, by the
 Army Map Service (AMS), U.S. Army, Washington, D.C., 1943.
 Based on U.S.G.S. quadrangle, Glennville, 1:62,500 (1920).
 Control by U.S. Geological Survey.
 Surveyed in cooperation with the War Department, 1918-1919.
 Revised from single lens aerial photographs.
 Aerial photography by A.A.A. Department of Agriculture, 1939-1941.
 Polyconic Projection, North American Datum 1927.

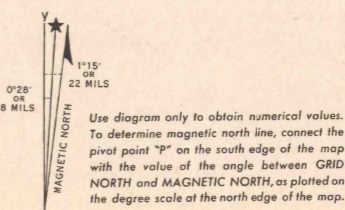
H-15 ROAD CLASSIFICATION 1942

Dependable hard surface: U.S. Route State Route Lane Lane
 Secondary hard surface: State Route Lane Lane
 Dependent hard surface: State Route Lane Lane
 More than two lanes indicated by note along road with tick at point of change.

Scale 1:62,500
 1 1/2 2 3 Miles
 1000 0 1000 2000 3000 4000 5000 Yards

CONTOUR INTERVAL 10 FEET
DATUM IS MEAN SEA LEVEL

FIVE THOUSAND YARD GRID COMPUTED FROM "GRID SYSTEM FOR PROGRESSIVE MAPS
 IN THE U. S. ZONE 18", U. S. G. S. SPECIAL PUBLICATION NO. 99
 THE LAST THREE DIGITS OF THE GRID NUMBERS ARE OMITTED
 GEORGIA STATE GRID ZONE EAST IS INDICATED BY DOTTED TICKS
 OUTSIDE THE NEXT LINE AT 10 000 FT. INTERVALS
 NOTE: OFFICERS USING THIS MAP WILL MAKE NECESSARY CORRECTIONS AND ADJUSTMENTS WHICH COME
 TO THEIR ATTENTION AND WILL DIRECT TO THE CHIEF OF ENGINEERS, WASHINGTON, D. C.



4/44 SX

LEGEND
BRUSH

GLENNVILLE, GA.
N3145-W8145/15

LUDOWICI