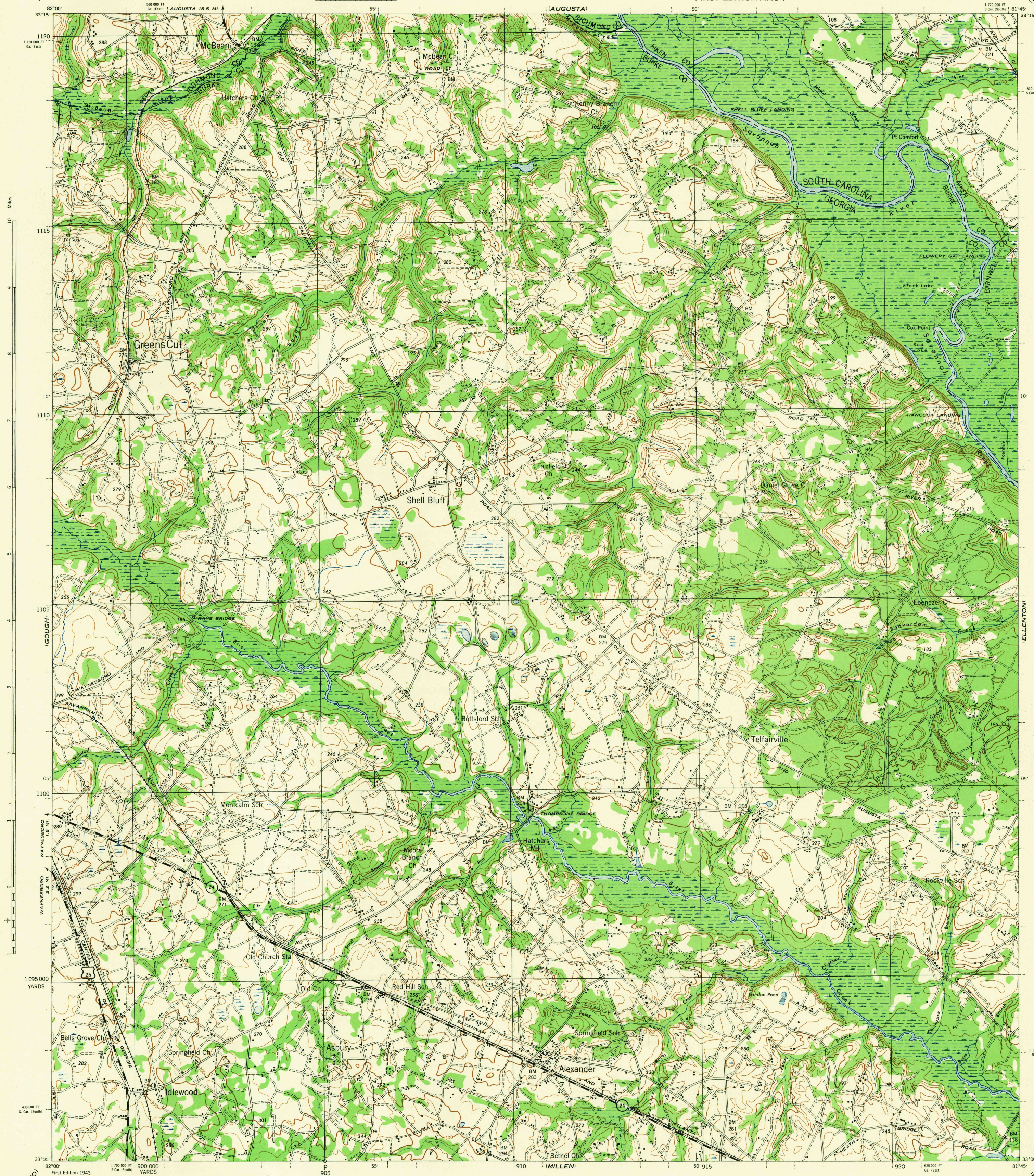


(HEPHZIBAH)

(ITALATHA)

FIRST EDITION-AMS 1



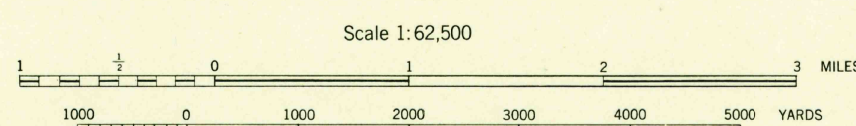
(SWAINBORO)
(1:25,000)

Prepared under the direction of the Chief of Engineers, U. S. Army, by Army Map Service (U. S. Army, Washington, D. C., 1942).
Horizontal control by U. S. G. S. and U. S. G. S.
Vertical control by U. S. Geological Survey.
Surveyed by U. S. G. S. in cooperation with the War Department, 1918-1919.
Revised from aerial photographs by U. S. Department of Agriculture, 1938-1941.
Polyconic Projection, North American Datum, 1927.

H-15 ROAD CLASSIFICATION, 1942

Dependable hard-surface, heavy-duty road. Loose-surface graded, dry-weather road. U. S. Route State Route Lane Lane

Secondary, hard-surface, all-weather road. Dirt road. More than two lanes indicated by note along road with tick at point of change.

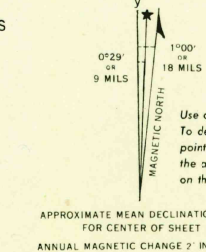


CONTOUR INTERVAL 20 FEET
DATUM IS MEAN SEA LEVEL

FIVE THOUSAND YARD GRID COMPUTED FROM GRID SYSTEM FOR PROGRESSIVE MAPS IN THE U. S. ZONE B. U. S. G. S. SPECIAL PUBLICATION NO. 59. THE LAST THREE DIGITS OF THE GRID NUMBERS ARE OMITTED.

THE STATE GRID MAP INDICATES THE GRID ZONE EAST BY TICKS FOR DISTANCES FROM ZONE SOUTH BY TICKS OUTSIDE THE NEAT LINE AT 5,000 FOOT INTERVALS.

NOTE: OFFICERS USING THIS MAP WILL MAKE REVISION CORRECTIONS AND ADDITIONAL WORK DONE TO THEIR ATTENTION AND WILL NOTIFY THE CHIEF OF ENGINEERS, WASHINGTON, D. C.



1/44 SX

GREENS CUT, GA.-S. C.
N3300-W8145/15

USGS
HISTORICAL FILE
TOPOGRAPHIC DIVISION

RETURN TO:
USGS AND HISTORICAL MAP ARCHIVES

(WILLTOWA)