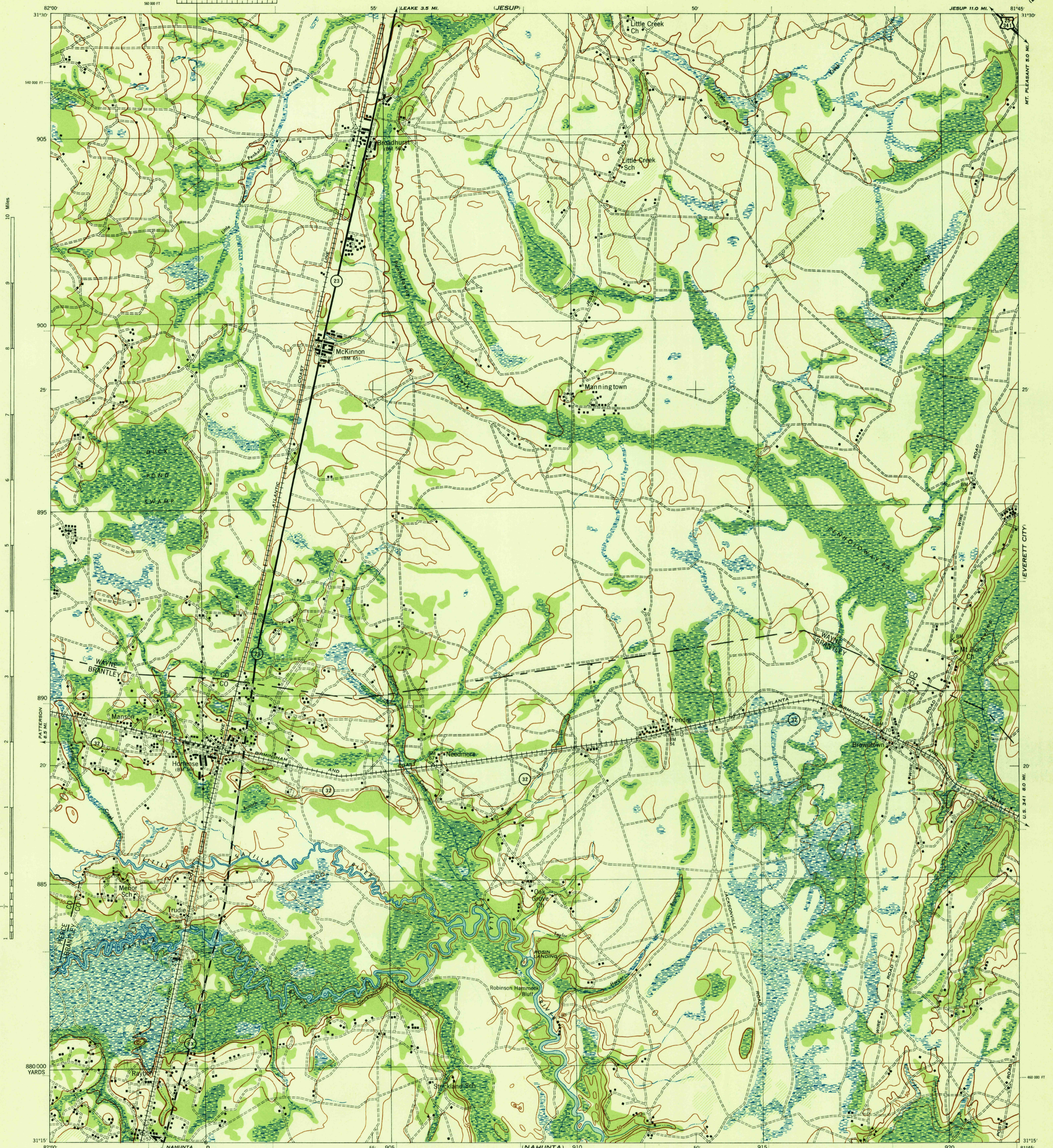


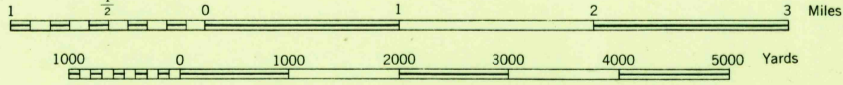
(LUDOWICI)



First Edition, 1944.
 Prepared under the direction of the Chief of Engineers, U. S. Army, by the
 Army Map Service (SU), U. S. Army, Washington, D. C., 1944.
 Based on U. S. G. S. quadrangle, Hortense, 1:62,500 (1918).
 Control by U. S. Geological Survey.
 Surveyed in cooperation with the War Department, 1917.
 Revised from single lens vertical aerial photographs.
 Aerial photography by A. A. A. Department of Agriculture, 1940-1941.
 Polyconic Projection, North American Datum.

H-15 ROAD CLASSIFICATION 1943

Dependable hard-surface, heavy-duty road
 Secondary hard-surface, all-weather road
 Local-surface gravel, dry weather road
 Dirt road
 State Route
 U. S. Route
 1 LANE 1 & 2 LANE



FIVE THOUSAND YARD GRID COMPUTED FROM "GRID SYSTEM FOR PROGRESSIVE MAPS
 IN THE U. S. ZONE 8 U. S. C. 8 0 0" SPECIAL PUBLICATION NO. 59
 THE LAST THREE DIGITS OF THE GRID NUMBERS ARE OMITTED
 Georgia State grid zone East, is indicated by dotted lines
 outside the map line at 10,000 ft. intervals.

NOTE: OFFICERS USING THIS MAP WILL HAVE BEEN CORRECTED AND ADDITIONS WHICH COME
 TO THEIR ATTENTION AND WILL BE SENT TO THE CHIEF OF ENGINEERS, WASHINGTON, D. C.

Use diagram only to obtain numerical values.
 To determine magnetic north line, connect the
 pivot point "P" on the south edge of the map
 with the value of the angle between GRID
 NORTH and MAGNETIC NORTH, as plotted on
 the degree scale at the north edge of the map.

APPROXIMATE MEAN DECLINATION 1943
 OR CENTER OF SHEET
 ANNUAL MAGNETIC CHANGE, 2 INCREASE

LEGEND
 BRUSH

HORTENSE, GA.
 N3115-W8145/15

USGS
 HISTORICAL FILE
 GRAPHIC DIVISION