

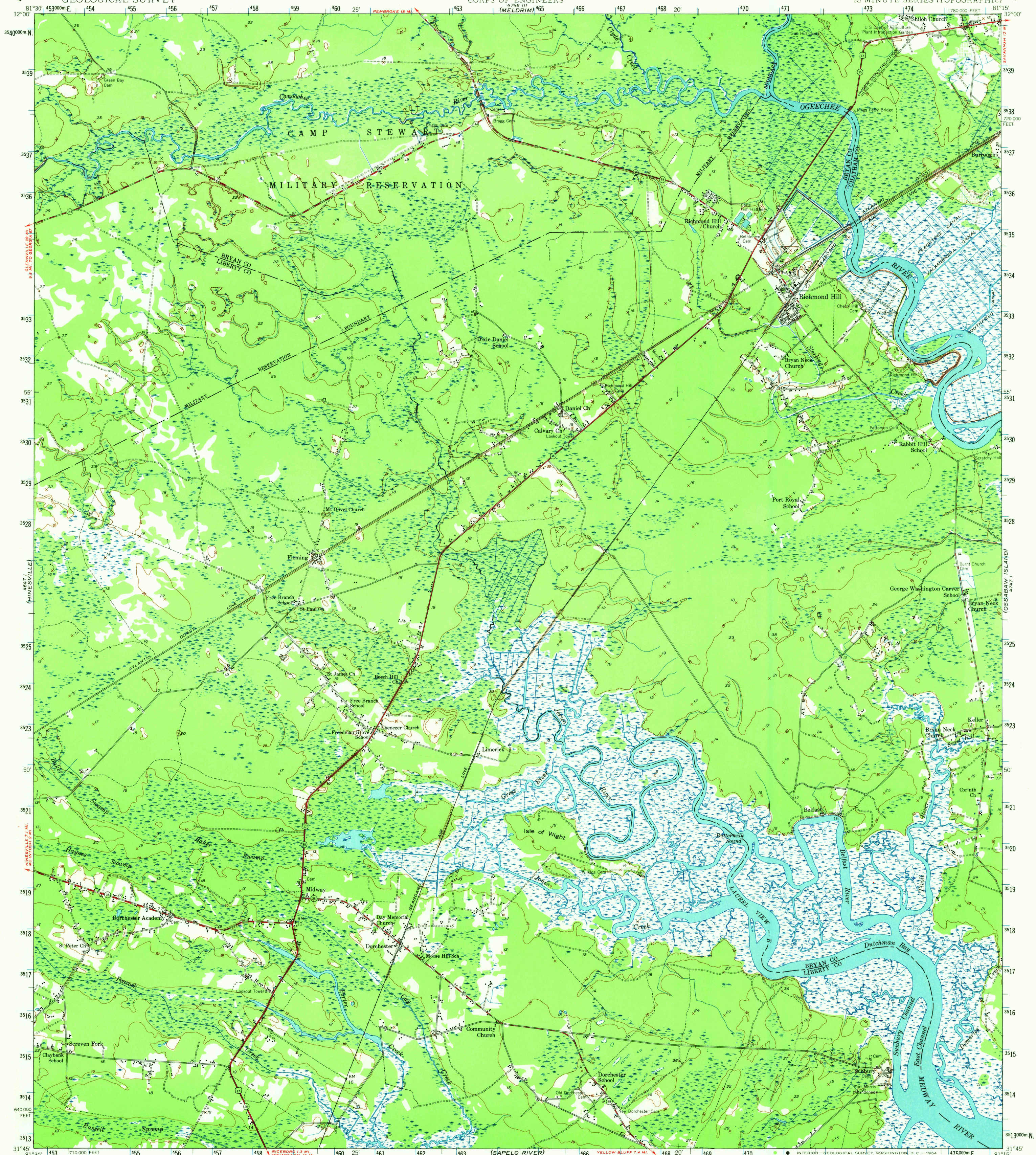
(PEPPERCKE)

UNITED STATES
DEPARTMENT OF THE INTERIOR
GEOLOGICAL SURVEY

UNITED STATES
DEPARTMENT OF THE ARMY
CORPS OF ENGINEERS

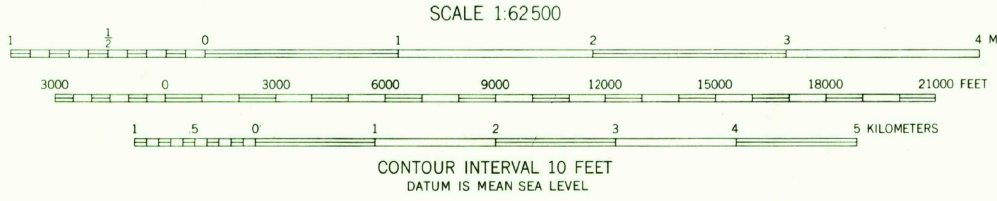
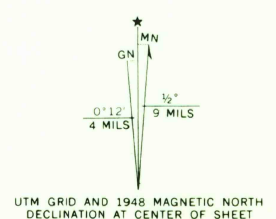
LIMERICK QUADRANGLE
GEORGIA
15 MINUTE SERIES (TOPOGRAPHIC)

(ST CATHERINE'S ISLAND)



(LUDLOW)

Mapped by the Army Map Service
Edited and published for civil use
by the Geological Survey
Control by Georgia Geodetic Survey, USC&GS, and AMS
Topography from aerial photographs by multicolored methods
Aerial photographs taken 1947. Field check 1948
Transverse Mercator projection. 1927 North American datum
10,000-foot grid based on Georgia coordinate system,
east zone
No distinction is made between dwellings, barns,
commercial and industrial buildings.
1000-meter Universal Transverse Mercator grid ticks,
zone 17, shown in blue



ROAD CLASSIFICATION

HARD SURFACE ALL WEATHER ROADS	DIRTY WEATHER ROADS
Heavy-duty ROAD	Improved dirt ROAD
Medium-duty ROAD	Unimproved dirt ROAD
Loose-surface, graded, or narrow hard-surface	
U. S. Route	State Route

LIMERICK, GA.
N3145-W8115/15
1948

AMS 4747 IV-SERIES V745

THIS MAP COMPLIES WITH NATIONAL MAP ACCURACY STANDARDS
FOR SALE BY U. S. GEOLOGICAL SURVEY, WASHINGTON 25, D. C.
A FOLDER DESCRIBING TOPOGRAPHIC MAPS AND SYMBOLS IS AVAILABLE ON REQUEST