

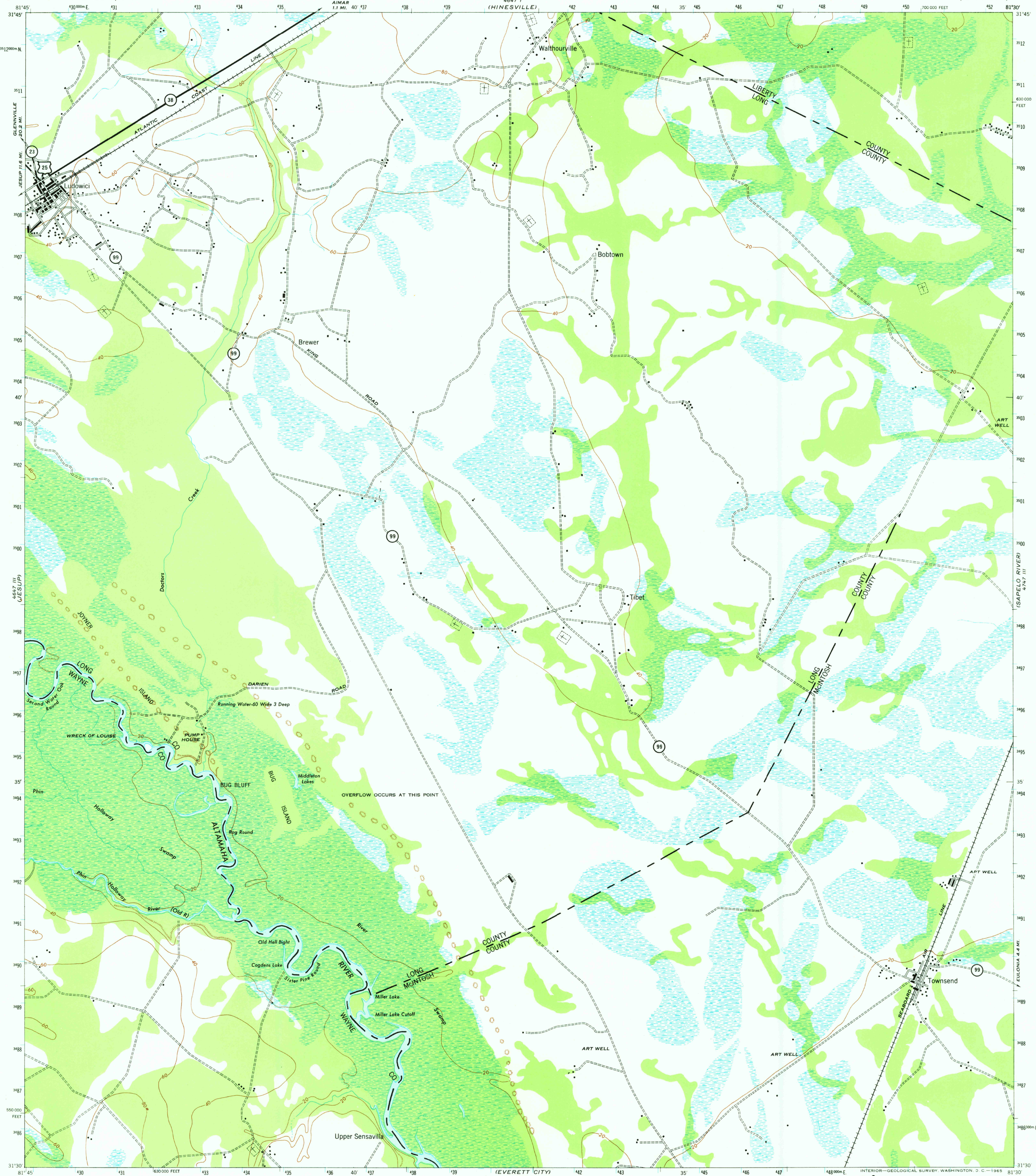
4647 V
(GLENNVILLE)

WAR DEPARTMENT
CORPS OF ENGINEERS, U.S. ARMY

LUDOWICI QUADRANGLE
GEORGIA

15 MINUTE SERIES (TOPOGRAPHIC)

4747 V
(LUDOWICI)



Prepared under the direction of the Chief of Engineers, U.S. Army, by the
Army Map Service (GS), U.S. Army, Washington, D.C., 1943.
Compiled by U.S. Army, quadrangle, Ludowici, 1:62,500 (1920).
Control by U.S. Geological Survey.
Revised from single lens vertical aerial photographs.
Aerial photography by U.S.A.C., 1942.
Mosaic by (KS), San Antonio, Texas 1942.
Polyconic Projection, North American Datum 1927.

1943
ROAD CLASSIFICATION
Dependable hard surface, heavy duty road
Loose surface graded, dry weather road
Secondary, hard surface, all weather road
Dirt road
U.S. Route
State Route
3 LANE 2 LANE

UTM GRID AND 1943 MAGNETIC NORTH
DECLINATION AT CENTER OF SHEET

SCALE 1:62,500
10,000-FOOT GRID TICKS, GEORGIA PLANE COORDINATE SYSTEM, EAST ZONE, SHOWN IN BLACK
1000-METER GRID TICKS, UNIVERSAL TRANSVERSE MERCATOR SYSTEM, ZONE 17, SHOWN IN BLUE
CONTOUR INTERVAL 20 FEET
DATUM IS MEAN SEA LEVEL

REPRINTED FROM MILITARY EDITION FOR CIVIL USE
FOR SALE BY U.S. GEOLOGICAL SURVEY, WASHINGTON, D.C. 20242
A FOLDER DESCRIBING TOPOGRAPHIC MAPS AND SYMBOLS IS AVAILABLE ON REQUEST

QUADRANGLE LOCATION

LUDOWICI, GA.
N3130-W8130/15

1943

AMS-4647 II SERIES V745

4748 V
(RIDGEVILLE)