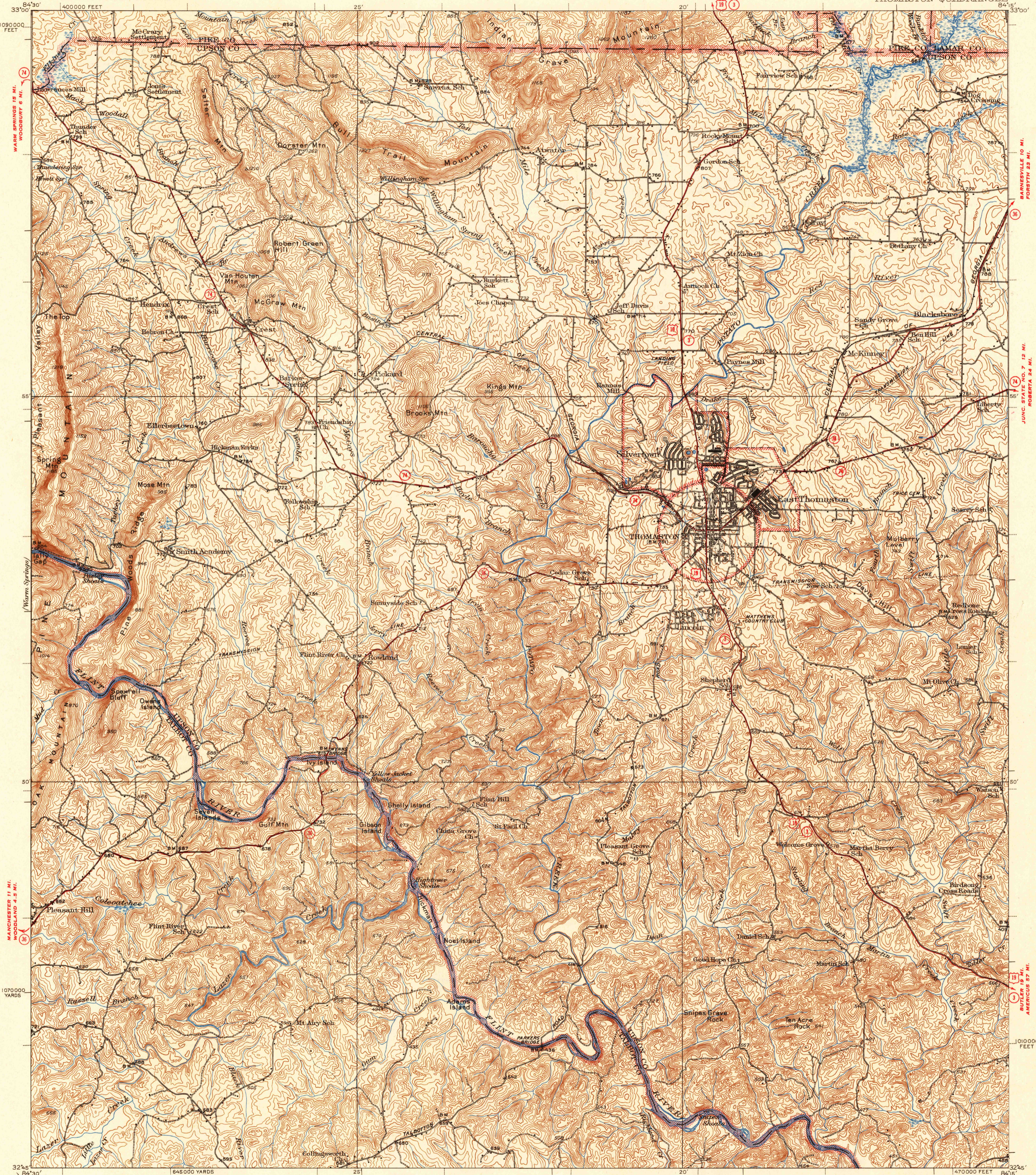


U.S.G.S.
FILE COPY
Inspection and Editing.

UNITED STATES
DEPARTMENT OF THE INTERIOR
GEOLOGICAL SURVEY

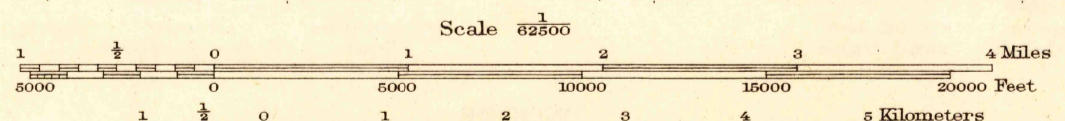
ATLANTA (CIVIC CENTER) 58 MI.
ZEBULON 7 MI.

GEORGIA
THOMASTON QUADRANGLE



Topography by Roscoe Reeves, C.F. Fuechsel,
C.S. Maltby, J.L. Farmer, E.C. Gartner,
J.L. Cram, and J.M. Johnson
Surveyed in 1934-1935

TRUE NORTH
MAGNETIC NORTH
APPROXIMATE MEAN
DECLINATION, 1935



Contour interval 20 feet
Datum is mean sea level

USGS
Historical File
Topographic Division

ROUTES USUALLY TRAVELED
HARD IMPERVIOUS SURFACES
OTHER SURFACE IMPROVEMENTS
U.S. ROUTE 1943 STATE ROUTE

Polyconic projection, 1927 North American datum
5000 yard grid based on U.S. zone system, B
10000 foot grid based on Georgia (West)
rectangular coordinate system

THOMASTON, GA.
Edition of 1933
reprinted 1944
N3245-W8415/15

U.S.G.S.
FILE COPY
Inspection and Editing.

JUN 9 - 1944