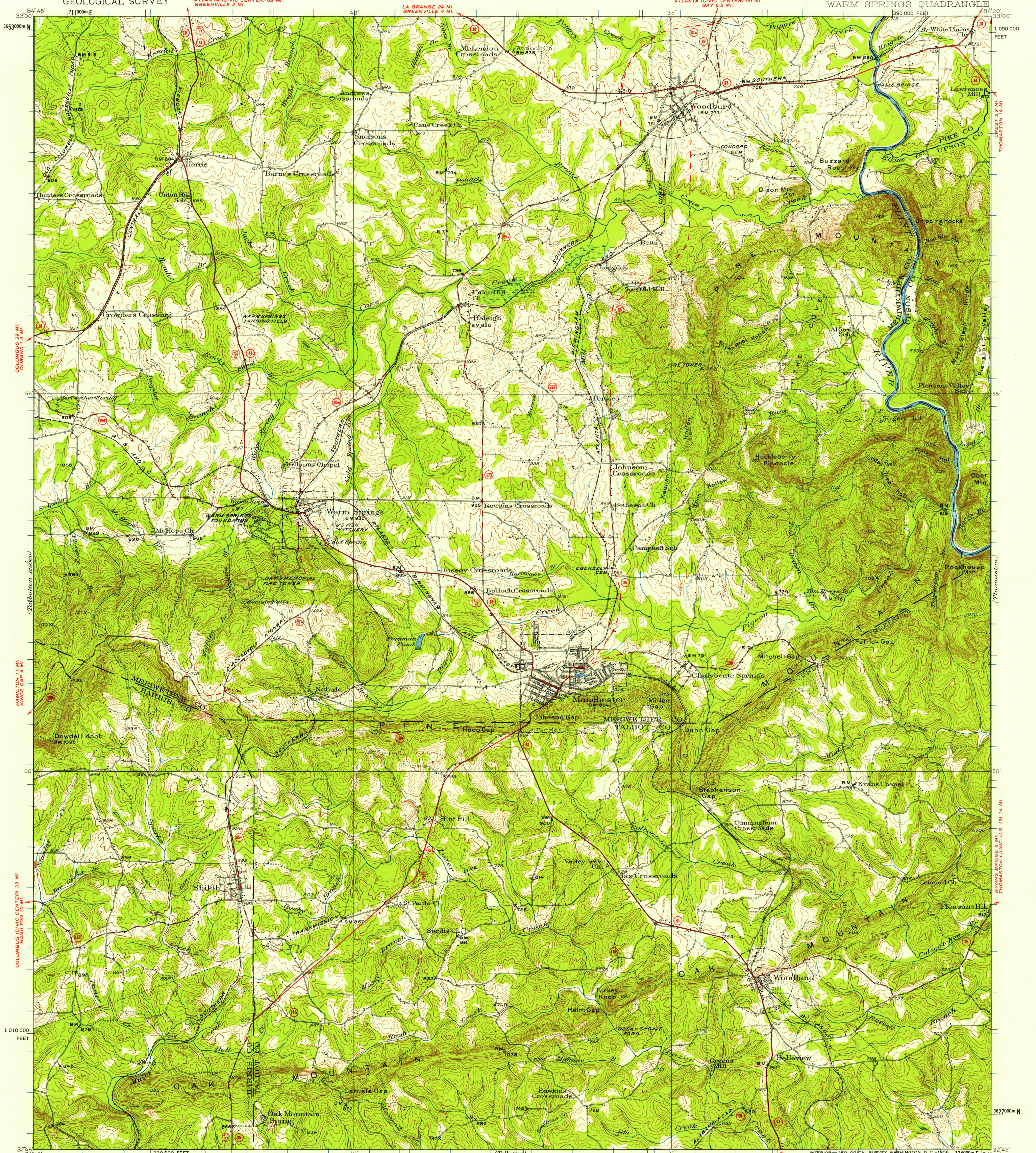


UNITED STATES
DEPARTMENT OF THE INTERIOR
GEOLOGICAL SURVEY

GEORGIA
WARM SPRINGS QUADRANGLE
ZEBULON (JUNC. U.S. 19) 14 MI.
MOLENA 1 MI.



Topography by J.O. Kilmartin, J.L. Farmer, E.C. Gartner, and M. Henderson. Surveyed in 1933-1934.

SCALE 1:62,500

CONTOUR INTERVAL 20 FEET
DATUM IS MEAN SEA LEVEL

ROAD CLASSIFICATION

Heavy-duty	Light-duty
Medium-duty	Unimproved dirt
U.S. Route	State Route

WARM SPRINGS, GA.
N3245-W8430/15

1934

FOR SALE BY U.S. GEOLOGICAL SURVEY, WASHINGTON 25, D. C.
A FOLDER DESCRIBING TOPOGRAPHIC MAPS AND SYMBOLS IS AVAILABLE ON REQUEST

U.S.G.S.
FILE COPY
TOPOGRAPHIC MAP

APR - 1 1950
2955