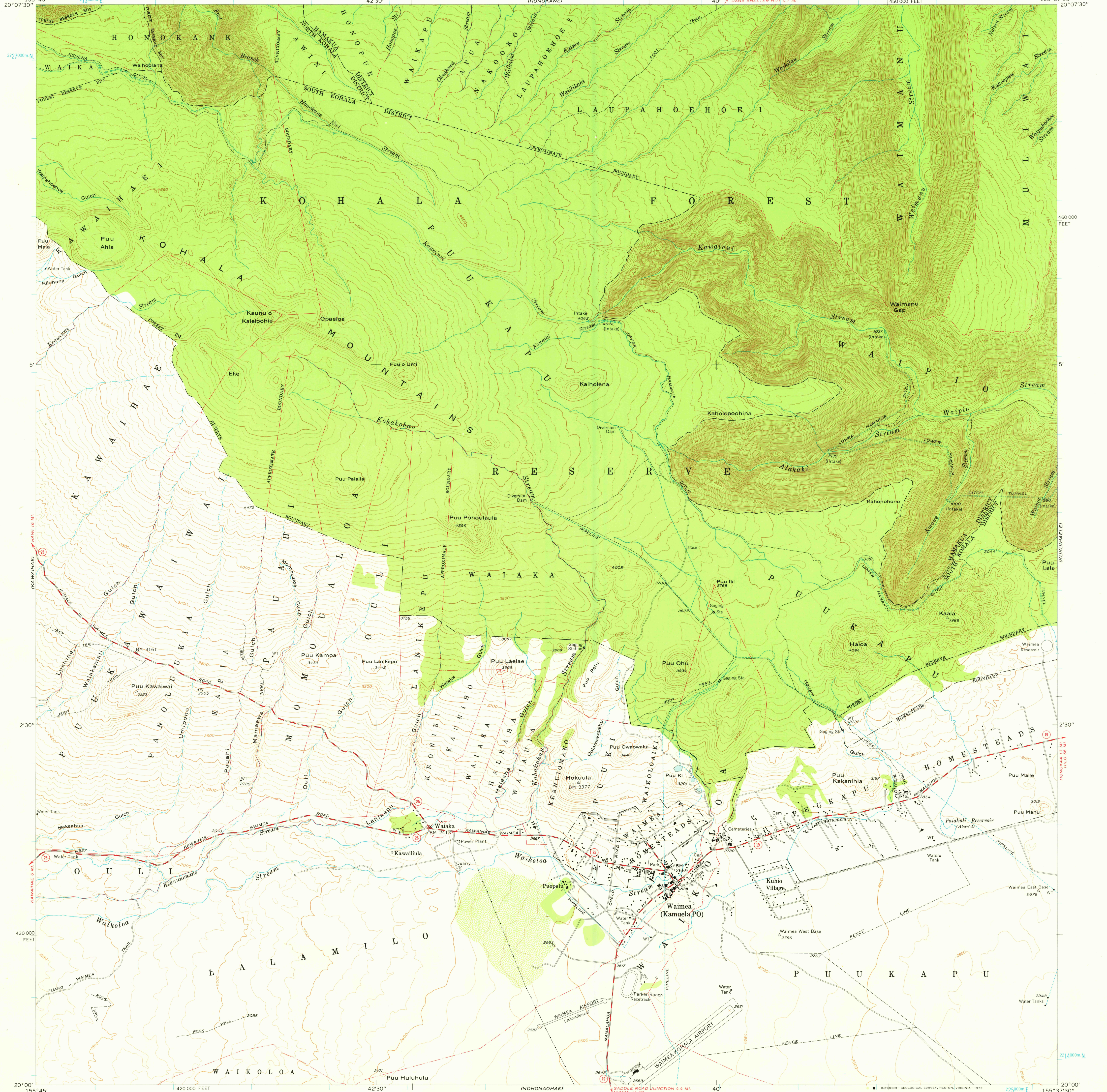


UNITED STATES
DEPARTMENT OF THE INTERIOR
GEOLOGICAL SURVEY

KAMUELA QUADRANGLE
HAWAII-ISLAND AND COUNTY OF HAWAII
7.5 MINUTE SERIES (TOPOGRAPHIC)
SW 1/4 WAIPIO 15' QUADRANGLE

155°45' 20°07'30" 213000m E 42°30' (HONOKANE) 40° USGS SHELTER HUT 0.1 MI 1450 000 FEET 155°37'30" 20°07'30" 227000m N



Maped, edited, and published by the Geological Survey
Control by USGS and USC&GS
Topography from aerial photographs by multiplex methods
Aerial photographs taken 1954. Field check 1956
Polyconic projection. Old Hawaiian datum
10,000-foot grid based on Hawaiian coordinate system, zone 1
1000-metre Universal Transverse Mercator grid ticks,
zone 5, shown in blue
Unchecked elevations are shown in brown

TRUE NORTH
MAGNETIC NORTH
APPROXIMATE MEAN
DECLINATION, 1956

SCALE 1:24,000
CONTOUR INTERVAL 40 FEET
NATIONAL GEODETIC VERTICAL DATUM OF 1929

THIS MAP COMPLIES WITH NATIONAL MAP ACCURACY STANDARDS
FOR SALE BY U. S. GEOLOGICAL SURVEY, DENVER, COLORADO 80225, OR RESTON, VIRGINIA 22092
A FOLDER DESCRIBING TOPOGRAPHIC MAPS AND SYMBOLS IS AVAILABLE ON REQUEST

ROAD CLASSIFICATION
Medium duty ——— Light duty ———
Unimproved dirt ———
Terr Route

HAWAIIAN ISLANDS
QUADRANGLE LOCATION

KAMUELA, HAWAII
SW 1/4 WAIPIO 15' QUADRANGLE
N2000—W15537.5/7.5
1956