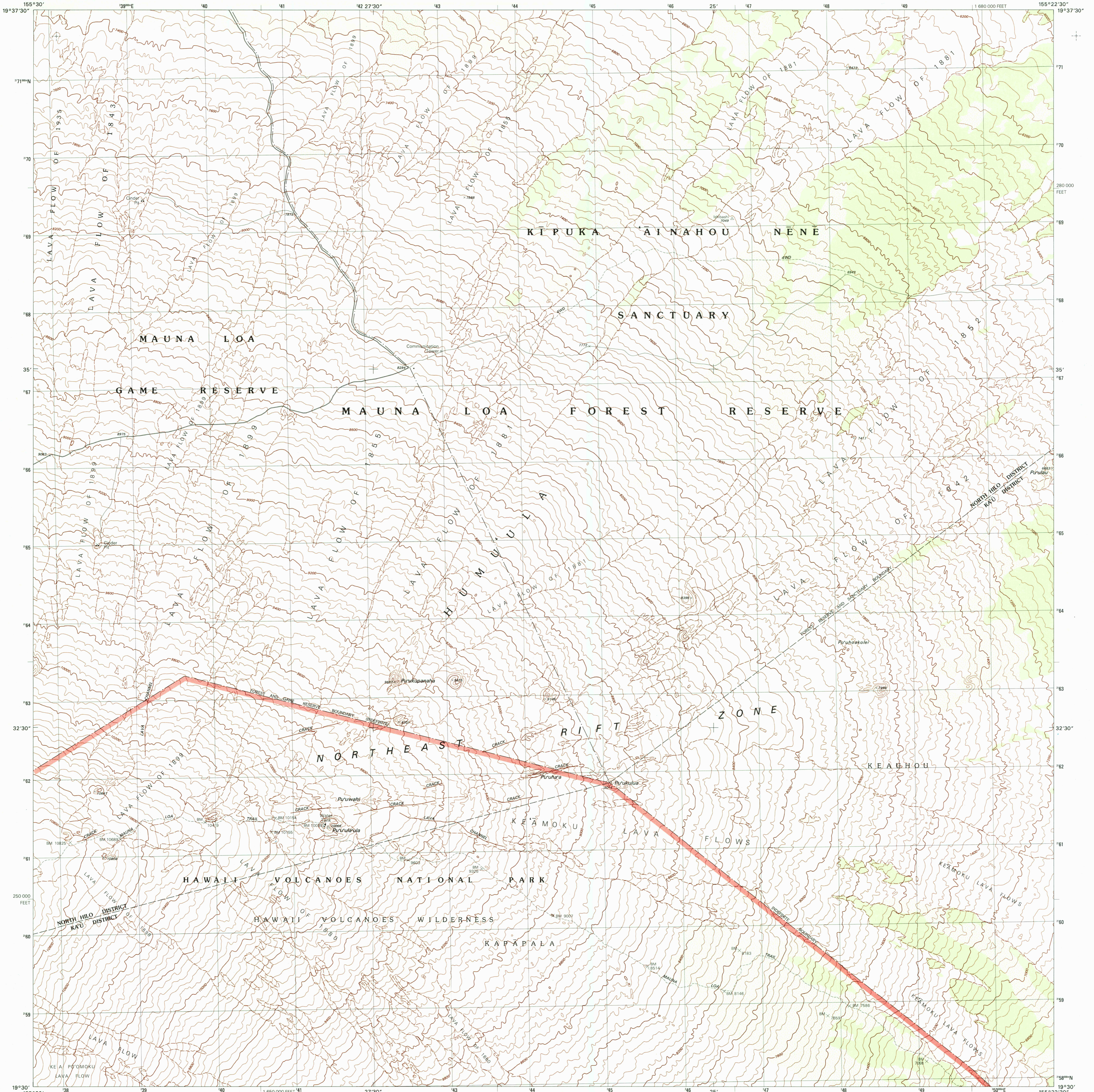


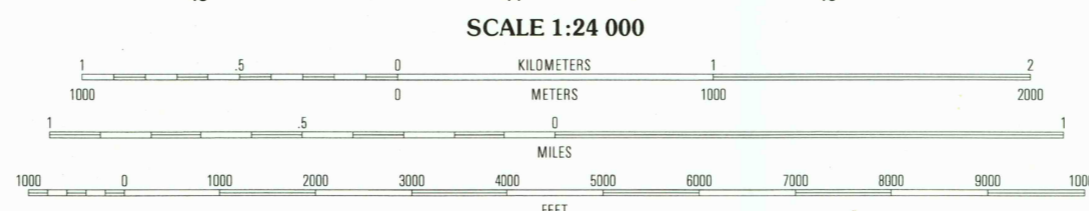
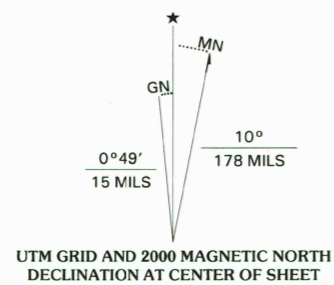


U.S. DEPARTMENT OF THE INTERIOR
U.S. GEOLOGICAL SURVEY

PU'U'ULA'ULA QUADRANGLE
HAWAII-HAWAII CO.
7.5-MINUTE SERIES (TOPOGRAPHIC)



Produced by the United States Geological Survey
Topography compiled 1954. Planimetry derived from imagery taken 1976 and other sources. Photoinspected using imagery taken 1993; no major culture or drainage changes observed. Survey control current as of 1981. Boundaries revised 2000.
North American Datum of 1983 (NAD 83). Projection and 1000-meter grid: Universal Transverse Mercator, zone 5 10 000-foot ticks: Hawaii Coordinate System of 1983 (zone 1)
Old Hawaiian Datum is shown by dashed corner ticks
The values of the shift between NAD 83 and Old Hawaiian Datum for 7.5-minute intersections are obtainable from National Geodetic Survey NADCON software
There may be private inholdings within the boundaries of the National or State reservations shown on this map



SCALE 1:24 000
CONTOUR INTERVAL 40 FEET
DATUM IS MEAN SEA LEVEL
TO CONVERT FROM FEET TO METERS, MULTIPLY BY 0.3048



ROAD CLASSIFICATION

Primary highway hard surface	Light-duty road, hard or improved surface
Secondary highway hard surface	Unimproved road
Interstate Route	U.S. Route
	State Route

1	2	3	1 Pu'uoli
			2 Pu'u. Oo
			3 Upper Pihoua
			4 Kilauea
4	5		5 Kilauea
			6 Mauna Loa
			7 Kilauea Crater
6	7	8	8 Kilauea Crater

RECEIVED
MAY 31 2001
USGS NMU
HISTORICAL MAP ARCHIVES

PU'U'ULA'ULA, HI
1993
NIMA 5917 III SW SERIES W833

THIS MAP COMPLIES WITH NATIONAL MAP ACCURACY STANDARDS
FOR SALE BY U.S. GEOLOGICAL SURVEY, P.O. BOX 25286, DENVER, COLORADO 80225
A FOLDER DESCRIBING TOPOGRAPHIC MAPS AND SYMBOLS IS AVAILABLE ON REQUEST

154916-10998/6
5 780637 91859