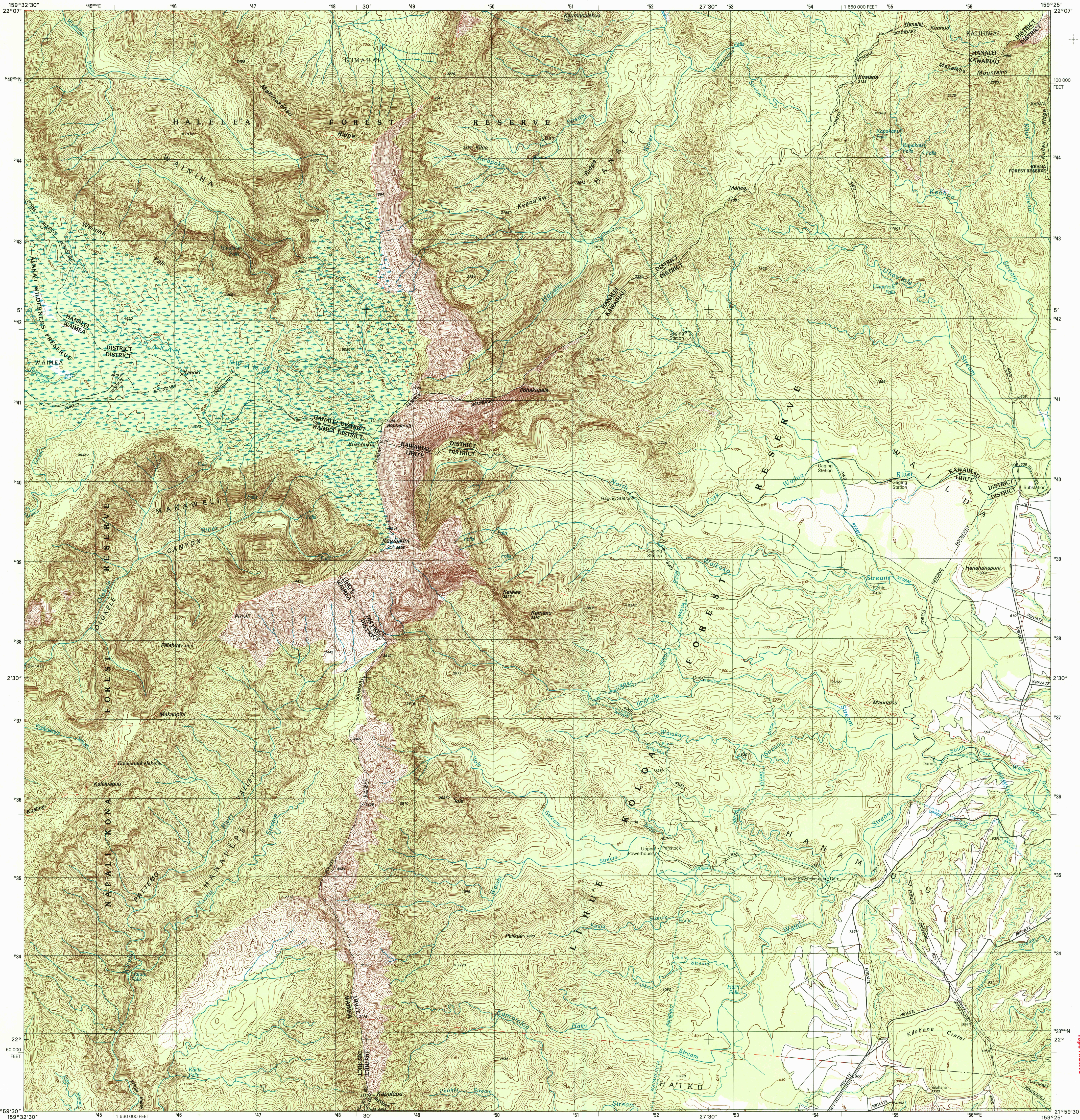


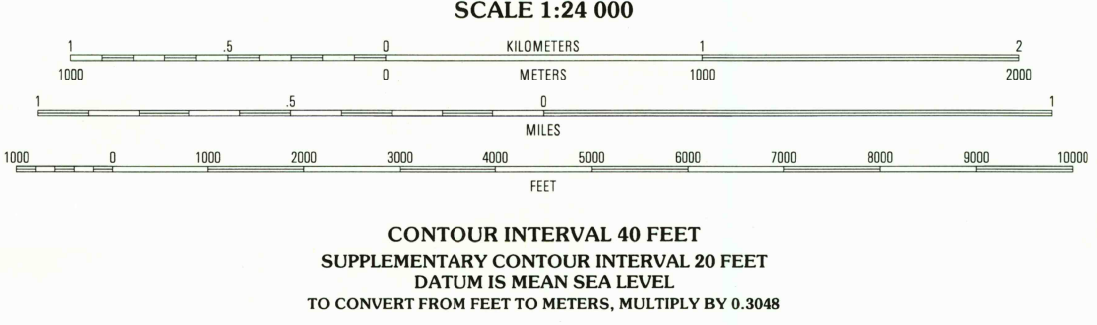
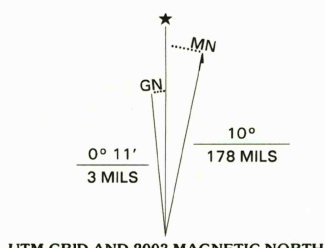


U.S. DEPARTMENT OF THE INTERIOR  
U.S. GEOLOGICAL SURVEY

WAI'ALE'ALE QUADRANGLE  
HAWAII-KAUAI CO.  
7.5-MINUTE SERIES (TOPOGRAPHIC)



Produced by the United States Geological Survey  
Topography compiled 1959. Planimetry derived from imagery taken 1978 and other sources. Photomaps derived from imagery taken 1991  
no major culture or drainage changes observed. Survey control current as of 1981. Boundaries revised 2001  
North American Datum of 1983 (NAD 83). Projection and 1 000-meter grid: Universal Transverse Mercator, zone 4  
10 000-foot ticks: Hawaii Coordinate System of 1983 (zone 4)  
Old Hawaiian Datum is shown by dashed corner ticks  
The values of the shift between NAD 83 and Old Hawaiian Datum for 7.5-minute intersections are obtainable from National Geodetic Survey NADCON software  
There may be private inholdings within the boundaries of the National or State reservations shown on this map



QUADRANGLE LOCATION

1	2	3
4	5	6
7	8	9

ADJOINING 7.5 QUADRANGLES

DEC 03 2003



WAI'ALE'ALE, HI  
1991

NIMA 5122 III SW-SERIES W833

USGS Library  
Reston, VA.  
Topo Archive



FOR SALE BY U.S. GEOLOGICAL SURVEY, P.O. BOX 25286, DENVER, COLORADO 80225  
A FOLDER DESCRIBING TOPOGRAPHIC MAPS AND SYMBOLS IS AVAILABLE ON REQUEST