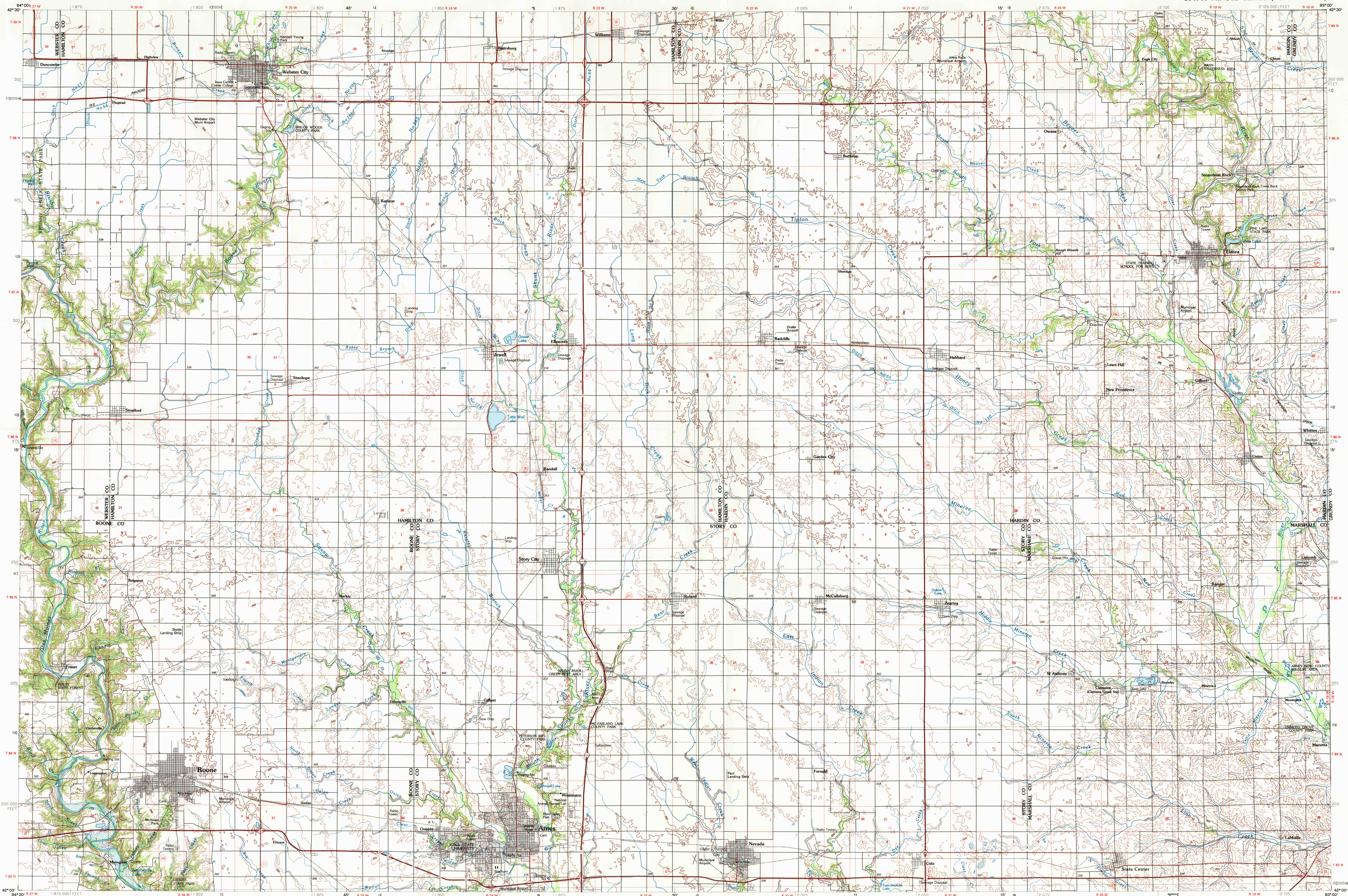
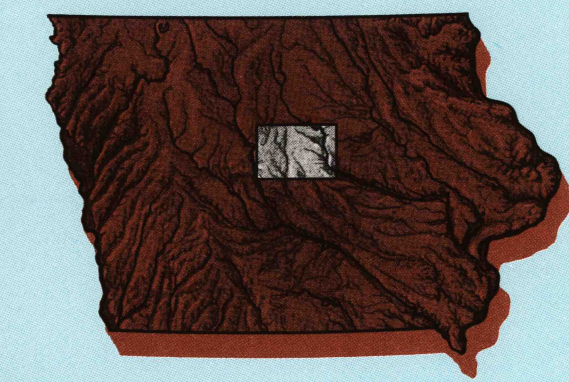
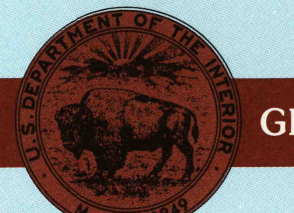


AMES, IOWA

30 X 60 MINUTE SERIES (TOPOGRAPHIC)

Ames
IOWA1:100 000-scale metric
topographic map30 X 60 MINUTE QUADRANGLE
SHOWING

- Contours and elevations in meters
- Highways, roads and other manmade structures
- Water features
- Woodland areas
- Geographic names



GEOLOGICAL SURVEY

1993

Produced by the United States Geological Survey

Compiled from USGS 1:24 000-scale topographic maps dated 1965-1979. Planimetry revised from aerial photographs taken 1990 and other source data. Revised information not field checked. Map edited 1993.

Projection and 10 000-meter grid, zone 15 Universal Transverse Mercator

25 000-foot grid ticks based on Iowa coordinate system, north zone 1927 North American Datum

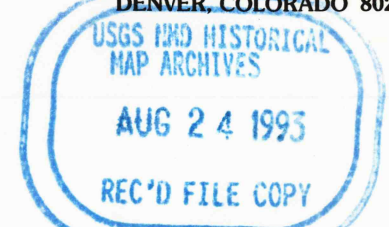
The difference between NAD 27 and North American Datum of 1983 (NAD 83) is too small to show at this scale. The values of the shift between the datums for 7.5-minute intersections are given in USGS Bulletin 1875

There may be private inholdings within the boundaries of the National or State reservations shown on this map

CONTOUR INTERVAL 10 METERS
NATIONAL GEODETIC VERTICAL DATUM OF 1929
ELEVATIONS SHOWN TO THE NEAREST METER

THIS MAP COMPLIES WITH NATIONAL MAP ACCURACY STANDARDS

CONVERSION TABLE		DECLINATION DIAGRAM	ADJOINING MAPS		
Meters	Feet		1	2	3
1	3.2808		4	5	6
2	6.5617		7	8	9
3	9.8425				
4	13.1234				
5	16.4042				
6	19.6850				
7	22.9658				
8	26.2467				
9	29.5275				
10	32.8084				
To convert meters to feet multiply by 3.2808		UTM grid convergence (CM) and 1983 magnetic declination (MM) at center of map			
To convert feet to meters multiply by 0.3048		Diagram is approximate			

FOR SALE BY U.S. GEOLOGICAL SURVEY
DENVER, COLORADO 80225, OR RESTON, VIRGINIA 22092

Topographic Map Symbols

Primary highway, hard surface	
Secondary highway, hard surface	
Light duty road, principal street, hard or improved surface	
Other road or street, mail	
Route marker: Interstate, U.S. State	
Railroad: standard gauge, narrow gauge	
Bridge: overpass, underpass	
Tunnel: road, railroad	
Built up area, locality, elevation	
Airport: landing field, landing strip	
National boundary	
State boundary	
County boundary	
National or State reservation boundary	
Land grant boundary	
U.S. public lands survey: range, township, section	
Range, township, section line, constructed	
Power transmission line, pipeline	
Dam; dam with lock	
Cemetery; building	
Windmill; water well; spring	
Mine shaft; salt or cave; mine, quarry; gravel pit	
Campground; picnic area; U.S. location monument	
Ruins; cliff dwelling	
Distorted surface: strip mine, lava, sand	
Contours: index, intermediate, supplementary	
Bathymetric contours: index, intermediate	
Stream; lake; perennial; intermittent	
Rapids, large and small; falls, large and small	
Area to be submerged; marsh, swamp	
Land subject to controlled inundation; woodland	
Scrub; mangrove	
Orchard; vineyard	

A pamphlet describing topographic maps is available on request

AMES, IOWA
42093-A1-TM-100

1993