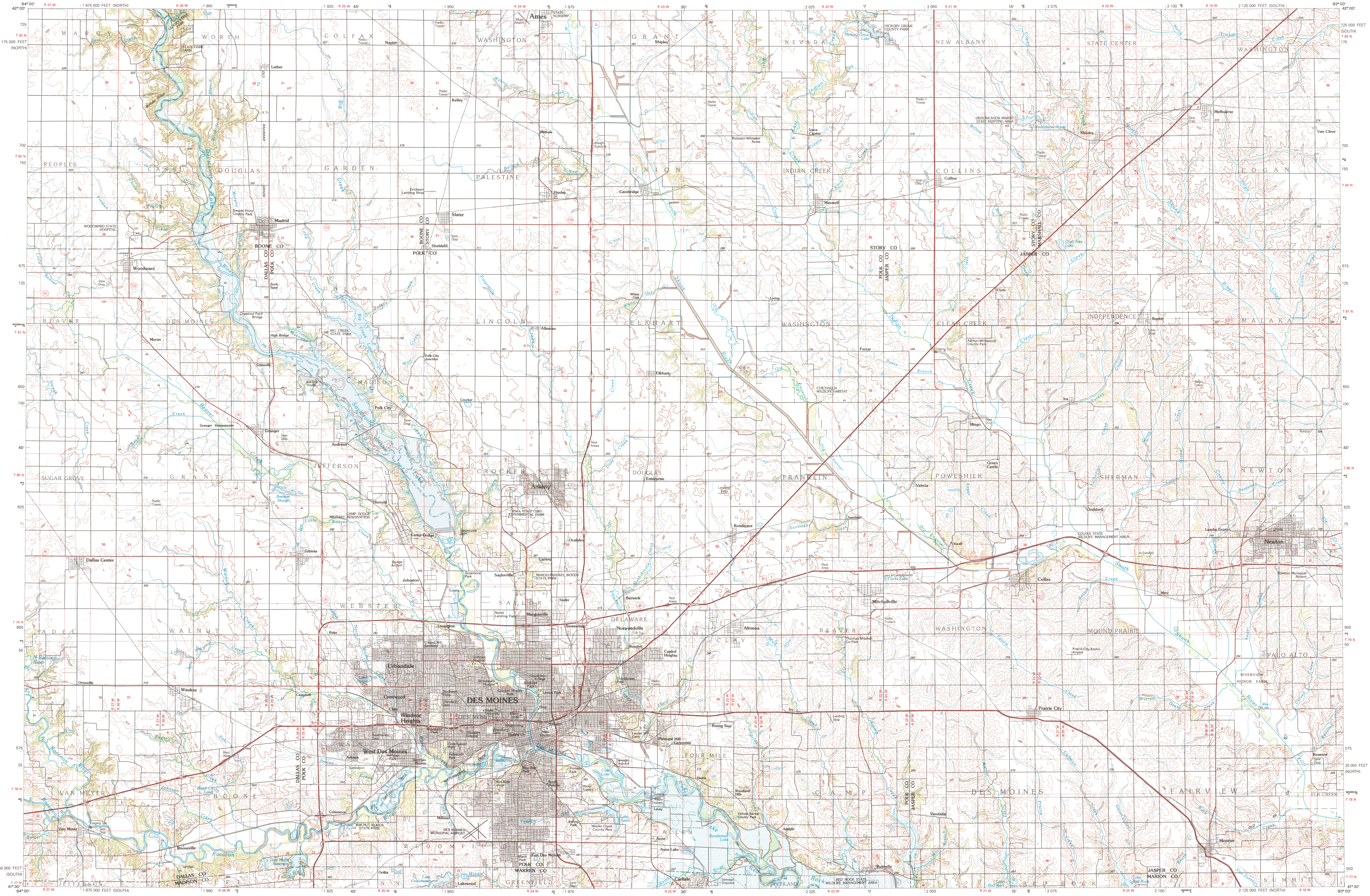


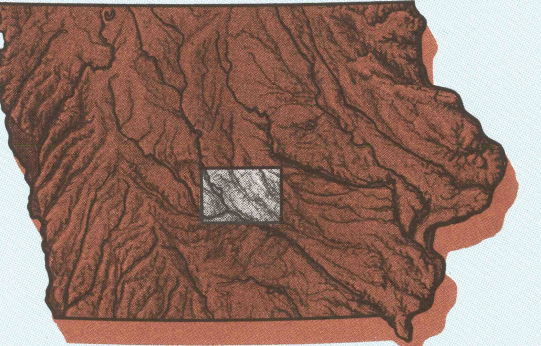
DES MOINES, IOWA

30 X 60 MINUTE SERIES (TOPOGRAPHIC)



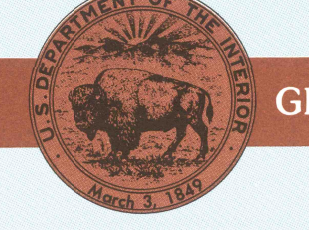
Des Moines IOWA

1:100 000-scale metric topographic map



30 X 60 MINUTE QUADRANGLE SHOWING

- Contours and elevations in meters
- Highways, roads and other manmade structures
- Water features
- Woodland areas
- Geographic names



GEOLOGICAL SURVEY

1984 PHOTOINSPECTED 1990

Produced by the United States Geological Survey
 Compiled from USGS 1:24 000-scale topographic maps dated 1965-1976. Planimetry revised from aerial photographs taken 1983 and other source data. Revised information not field checked. Map edited 1984.
 Projection and 10 000-meter grid, zone 15, Universal Transverse Mercator
 25 000-foot grid ticks based on Iowa coordinate system, south and north zones
 1927 North American Datum
 To place on the predicted North American Datum 1983, move the projection lines 4 meters north and 18 meters east
 There may be private inholdings within the boundaries of the National or State reservations shown on this map
 Map photorevised using 1990 photographs
 No major culture or drainage changes found
 CONTOUR INTERVAL 10 METERS
 NATIONAL GEODETIC VERTICAL DATUM OF 1929
 ELEVATIONS SHOWN TO THE NEAREST METER

THIS MAP COMPLIES WITH NATIONAL MAP ACCURACY STANDARDS

Meters	Feet
1	3.2808
2	6.5617
3	9.8425
4	13.1234
5	16.4042
6	19.6850
7	22.9659
8	26.2467
9	29.5275
10	32.8084

To convert meters to feet multiply by 3.2808
 To convert feet to meters multiply by 0.3048

Declination	Diagram
0°00'	Diagram 1
0°15'	Diagram 2
0°30'	Diagram 3
0°45'	Diagram 4
1°00'	Diagram 5
1°15'	Diagram 6
1°30'	Diagram 7
1°45'	Diagram 8

UTM grid convergency (GV) and 1984 magnetic declination (MD) at center of map
 Diagram is approximate

Adjoining Maps	1	2	3
1	Carroll		
2	Ames		
3	Marshalltown		
4	Goleta Center		
5	Grinnell		
6	Creighton		
7	Indianola		
8	Oskaloosa		

FOR SALE BY U.S. GEOLOGICAL SURVEY DENVER, COLORADO 80225, OR RESTON, VIRGINIA 22092

Topographic Map Symbols

- Primary highway, hard surface
- Secondary highway, hard surface
- Light duty road, principal street, hard or improved surface
- Other road or street, trail
- Route marker: Interstate, U.S., State
- Railroad: standard gauge, narrow gauge
- Bridge: overpass, underpass
- Tunnel: road, railroad
- Built up area: locality, elevation
- Airport: landing field, landing strip
- National boundary
- State boundary
- County boundary
- National or State reservation boundary
- Land grant boundary
- U.S. public lands survey: range, township, section
- Range, township, section line: protracted
- Power transmission line, pipeline
- Dam: dam with lock
- Cemetery: building
- Well: water well, spring
- Mine shaft, adit or cave, mine, quarry, gravel pit
- Campground, picnic area, U.S. location monument
- Buoy, light, dwelling
- Distorted surface: strip mine, lava, sand
- Contours: index, intermediate, supplementary
- Bathymetric contours: index, intermediate
- Stream, lake: perennial, intermittent
- Swamp, bog and marsh: salt, brack and fresh
- Area to be submerged: marsh, swamps
- Land subject to controlled inundation, woodland
- Shrub, mangrove
- Orchard, vineyard

A pamphlet describing topographic maps is available on request