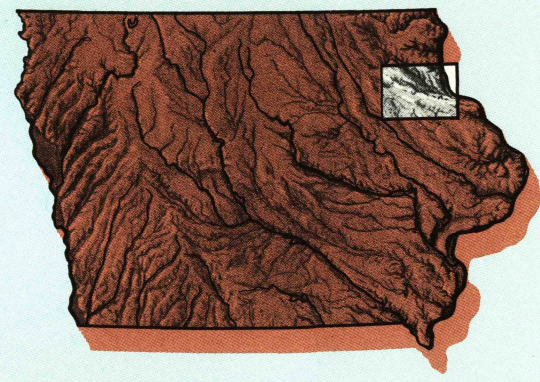


OELWEIN, IOWA-WISCONSIN

30 X 60 MINUTE SERIES (PLANIMETRIC)

Oelwein  
IOWA-WISCONSIN

1:100 000-scale  
planimetric map



30 X 60 MINUTE QUADRANGLE  
SHOWING

- Elevations in meters
- Highways, roads and other manmade structures
- Water features
- Woodland areas
- Geographic names



GEOLOGICAL SURVEY

1984

Produced by the United States Geological Survey

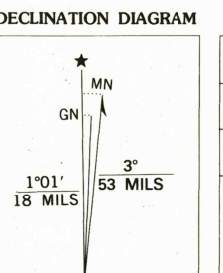
Compiled from USGS 1:24 000-scale topographic maps dated 1962-1981. Planimetry revised from aerial photographs taken 1983 and other source data. Revised information not field checked. Map edited 1984.

Projection and 10 000-meter grid, zone 15, Universal Transverse Mercator  
25 000-foot grid ticks based on Iowa coordinate system, north zone and Wisconsin coordinate system, south zone  
1927 North American Datum  
To place on the predicted North American Datum 1983, move the projection lines 5 meters north and 13 meters east  
There may be private inholdings within the boundaries of the National or State reservations shown on this map

NATIONAL GEODETIC VERTICAL DATUM OF 1929  
ELEVATIONS SHOWN TO THE NEAREST METER

CONVERSION TABLE	
Meters	Feet
2	6.5617
3	9.8425
4	13.1224
5	16.4042
6	19.6850
7	22.9659
8	26.2467
9	29.5276
10	32.8084

To convert meters to feet multiply by 3.2808  
To convert feet to meters multiply by 0.3048



UTM grid convergence (GN) and true magnetic declination (MN) at center of map  
Diagram is approximate

ADJOINING MAPS		
1	2	3
4	5	
6	7	8

- Charles City
- Decorah
- Richland Center
- Waverly
- Dubuque North
- Marshalltown
- Anamosa
- Dubuque South

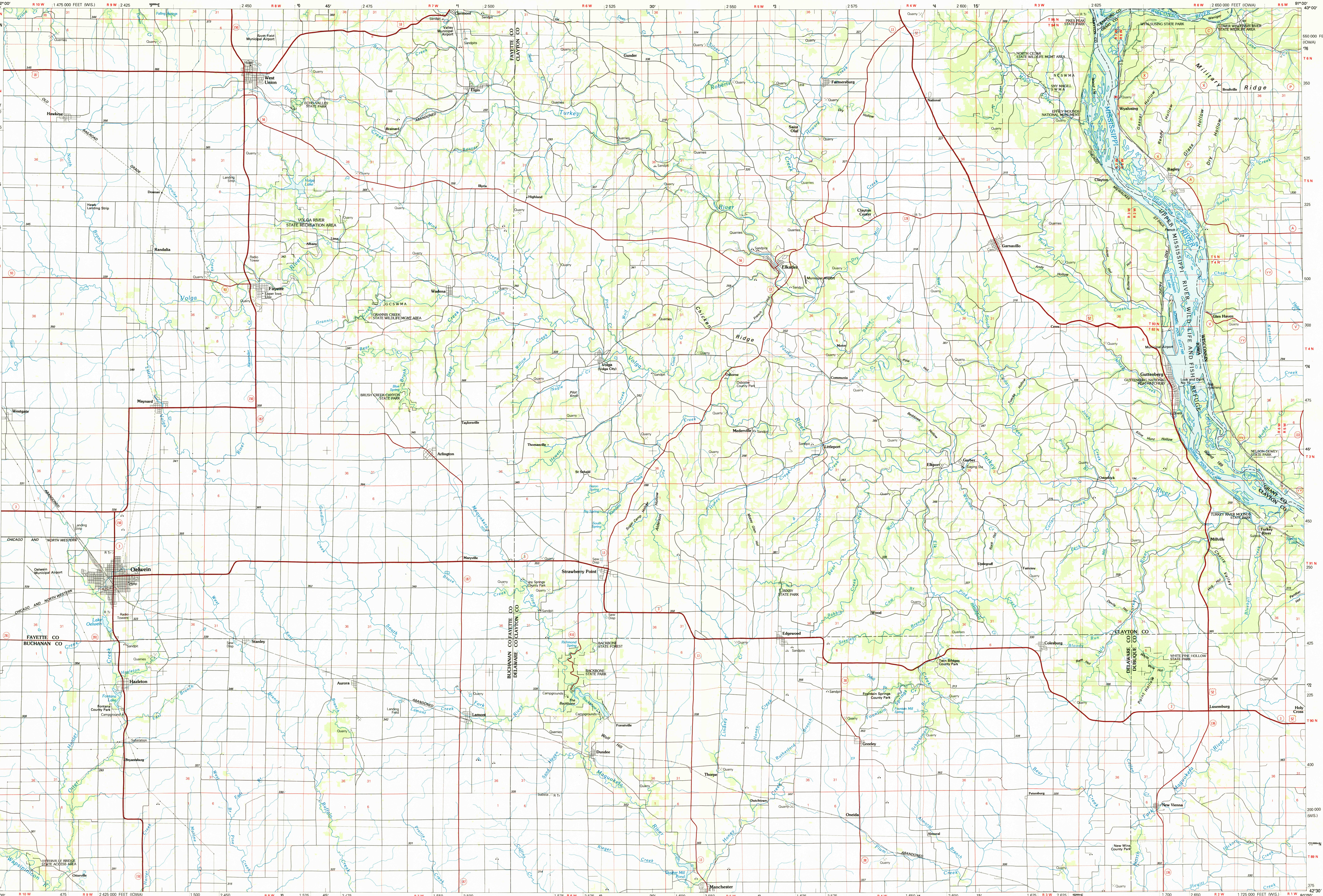
FOR SALE BY U. S. GEOLOGICAL SURVEY, DENVER, COLORADO 80225  
OR RESTON, VIRGINIA 22092

Topographic Map Symbols

- Primary highway, hard surface
- Secondary highway, hard surface
- Light duty road, principal street, hard or improved surface
- Other road or street, trail
- Route marker: Interstate U.S., State
- Railroad: standard gage; narrow gage
- Bridge: overpass; underpass
- Tunnel: road; railroad
- Built up area, locality, elevation
- Airport: landing field; landing strip
- National boundary
- State boundary
- County boundary
- National or State reservation boundary
- Land grant boundary
- U.S. public lands survey: range, township; section
- Range, township; section line: prorrated
- Power transmission line; pipeline
- Dam; dam with lock
- Cemetery; building
- Windmill; water well; spring
- Mine shaft; adit or cave; mine, quarry; gravel pit
- Campground; picnic area; U.S. location monument
- Ruins; cliff dwelling
- Distorted surface: strip mine, lava, sand
- Contours: index; intermediate; supplementary
- Bathymetric contours: index; intermediate
- Stream, lake, pond; intermittent
- Rapids, large and small; falls, large and small
- Area to be submerged; marsh, swamp
- Land subject to controlled inundation; woodland
- Scrub; mangrove
- Orchard; vineyard

A pamphlet describing topographic maps is available on request

RETURN TO  
USGS AND HISTORICAL MAP ARCHIVES



INTERIOR-GEOLOGICAL SURVEY, RESTON, VIRGINIA-1983  
KILOMETERS 1 0 1 2 3 4 5 6 7 8 9 10 11 12 13 14 15 16 17 18 19 20  
MILES 1 0 1 2 3 4 5 6 7 8 9 10 11 12 13 14 15 16 17 18 19 20  
SCALE 1:100 000  
1 CENTIMETER ON THE MAP REPRESENTS 1 KILOMETER ON THE GROUND  
5000 10000 15000 20000 25000 30000 35000 40000 45000 50000 55000 60000 65000 70000 FEET

OELWEIN, IOWA-WISCONSIN  
42091-E1-PL-100

1984