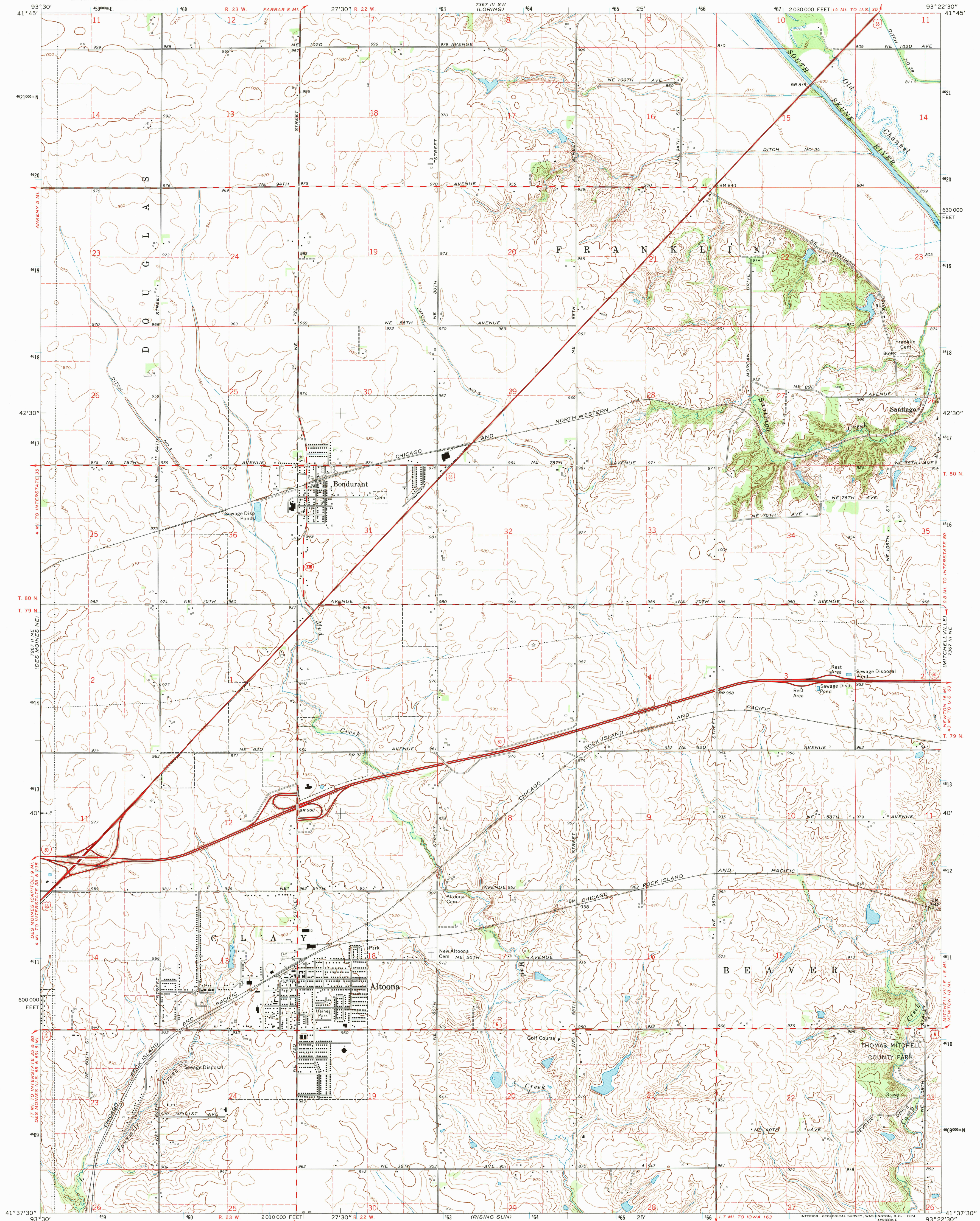


1972 (S&S)
(E-L-1465)

UNITED STATES
DEPARTMENT OF THE INTERIOR
GEOLOGICAL SURVEY

ALTOONA QUADRANGLE
IOWA—POLK CO.
7.5 MINUTE SERIES (TOPOGRAPHIC)
NW 1/4 MITCHELLVILLE 15' QUADRANGLE



Mapped, edited, and published by the Geological Survey

Control by USGS and USC&GS

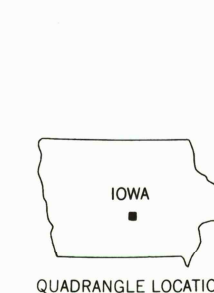
Topography by photogrammetric methods from aerial photographs taken 1971. Field checked 1972

Projection and 10,000-foot grid ticks: Iowa coordinate system, south zone (Lambert conformal conic)
1000-meter Universal Transverse Mercator grid ticks, zone 15, shown in blue. 1927 North American datum

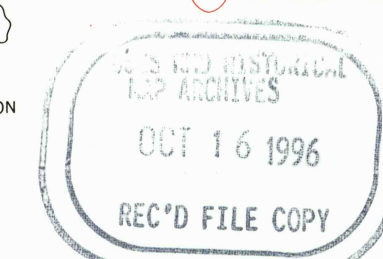
Fine red dashed lines indicate selected fence and field lines where generally visible on aerial photographs. This information is unchecked

UTM GRID AND 1972 MAGNETIC NORTH DECLINATION AT CENTER OF SHEET
0°17' 5 MILS
6° 107 MILS

SCALE 1:24,000
CONTOUR INTERVAL 10 FEET
DOTTED LINES REPRESENT 5-FOOT CONTOURS
DATUM IS MEAN SEA LEVEL



ROAD CLASSIFICATION
Primary highway, hard surface
Secondary highway, hard surface
Light-duty road, hard or improved surface
Unimproved road
Interstate Route
U. S. Route
State Route



ALTOONA, IOWA
NW 1/4 MITCHELLVILLE 15' QUADRANGLE
N4137.5—W9322.5/7.5

1972

AMS 7367 III NW—SERIES V876

ISSN 0-607-15693-7
9 780607 156935