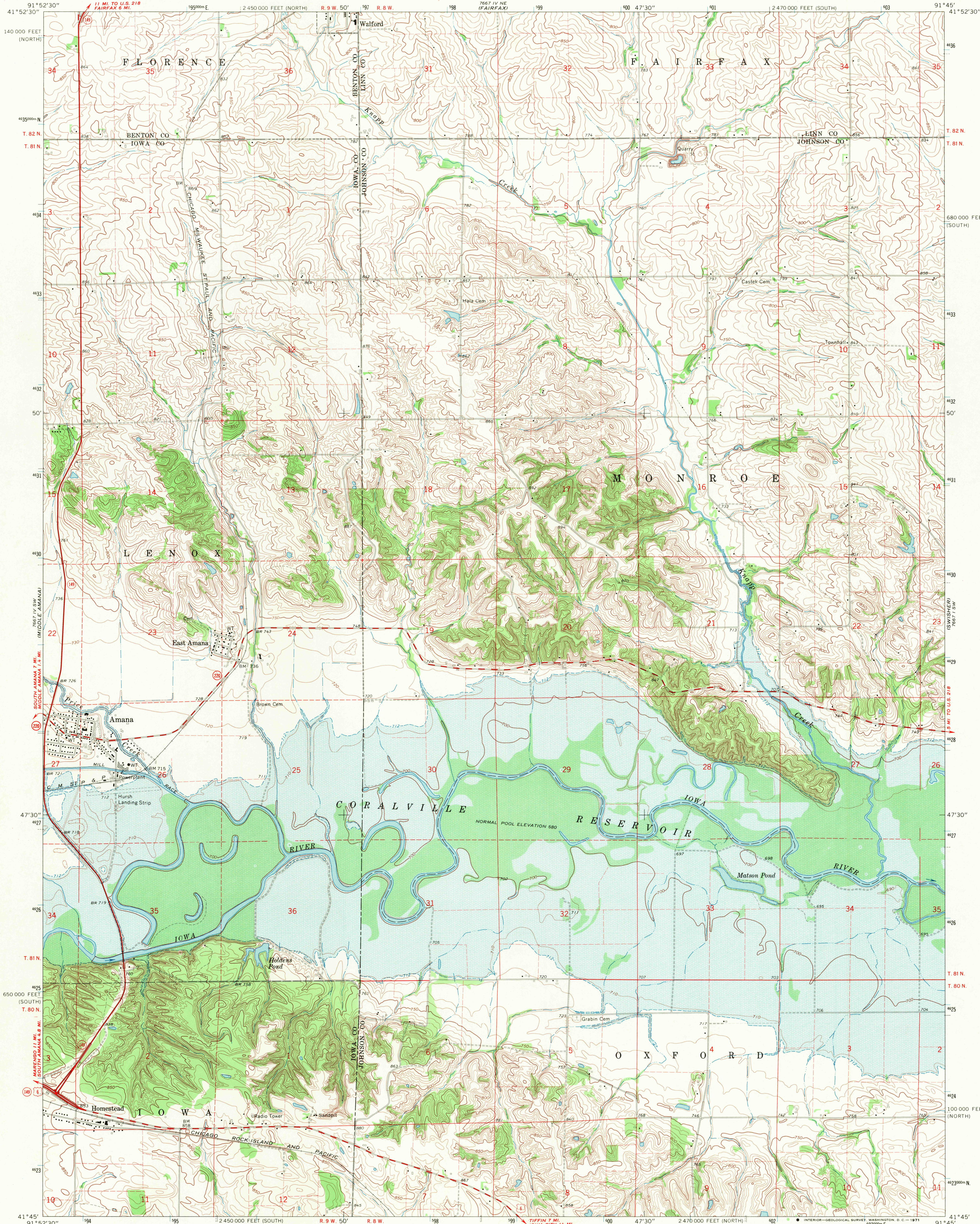
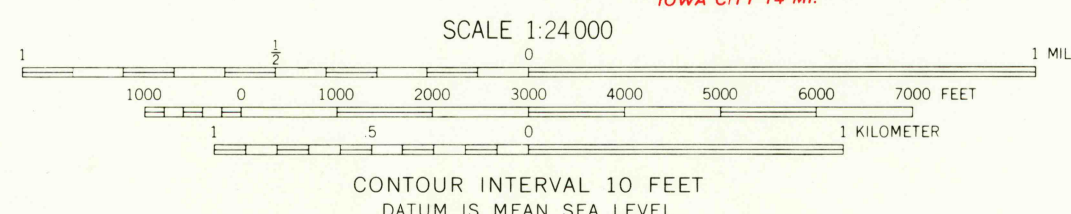


UNITED STATES
DEPARTMENT OF THE INTERIOR
GEOLOGICAL SURVEY

AMANA QUADRANGLE
IOWA
7.5 MINUTE SERIES (TOPOGRAPHIC)

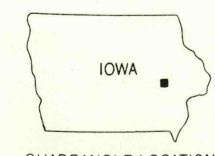


Mapped, edited, and published by the Geological Survey
Control by USGS and USC&GS
Topography by photogrammetric methods from aerial
photographs taken 1965 and planimetric surveys 1968
Polyconic projection. 1927 North American datum
10,000-foot grid based on Iowa coordinate system, south and north zones
1000-meter Universal Transverse Mercator grid ticks,
zone 15, shown in blue
Areas covered by dashed light-blue pattern
are subject to controlled inundation
Fine red dashed lines indicate selected fence and field lines where
generally visible on aerial photographs. This information is unchecked



USGS
Historical File
Topographic Division

ROAD CLASSIFICATION
Primary highway, all weather, hard surface
Secondary highway, all weather, hard surface
Light-duty road, all weather, improved surface
Unimproved road, fair or dry weather
U. S. Route
State Route



U.S.G.S.
FILE COPY
TOPOGRAPHIC DIVISION

AMANA, IOWA
N4145-W9145/7.5
1968
AMS 7667 IV SE-SERIES V876

2060
JAN 12 1971