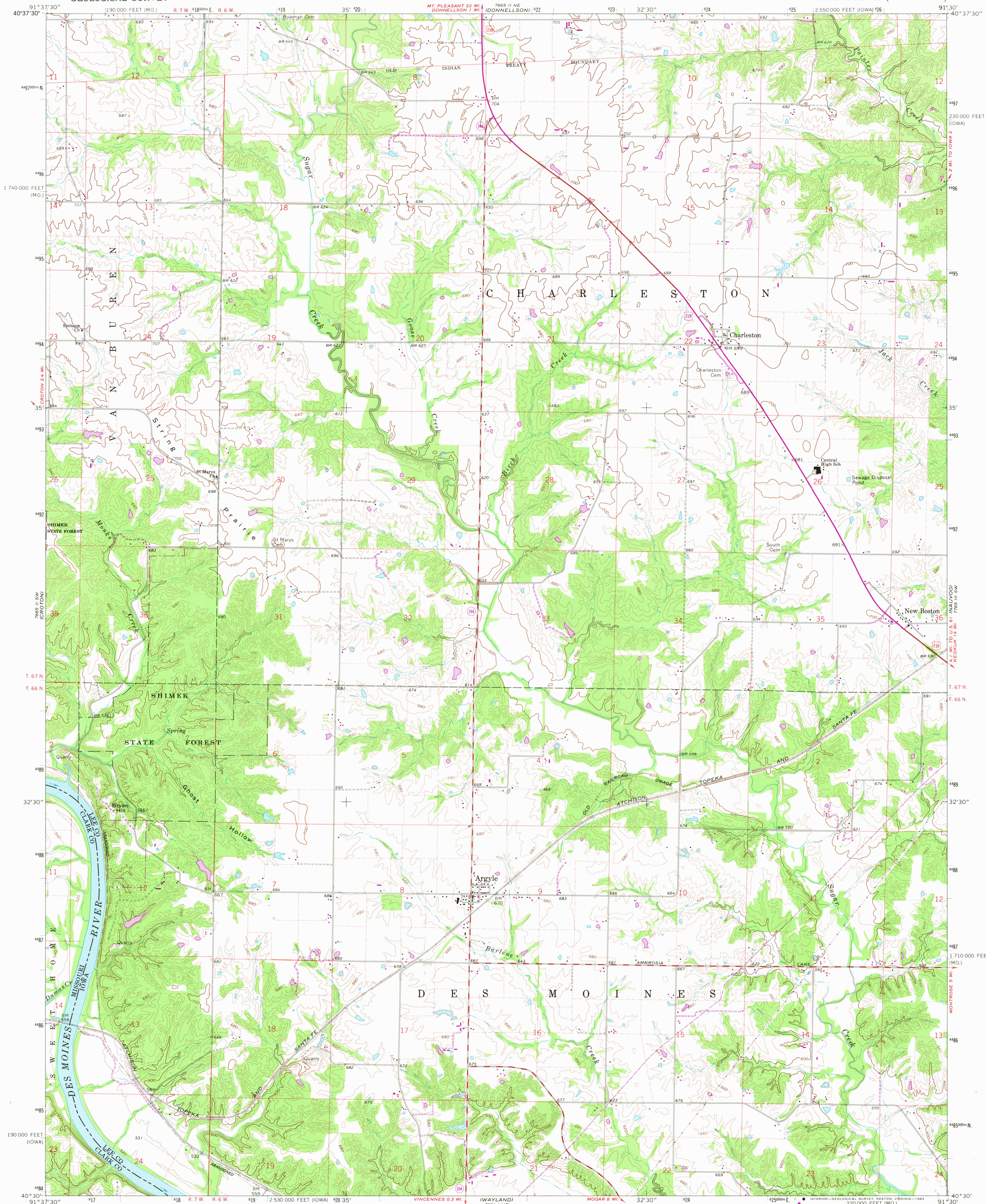
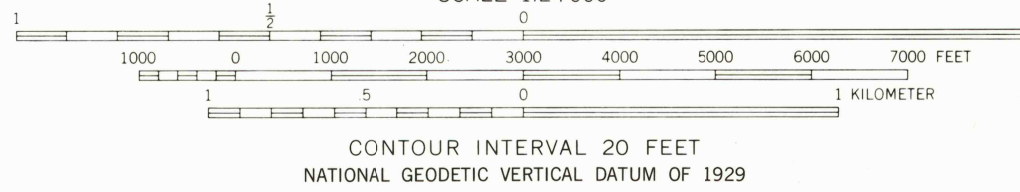
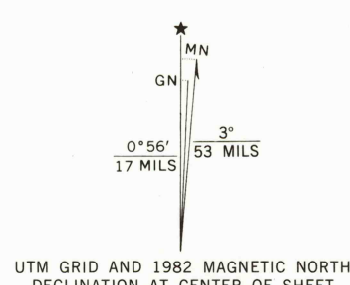


UNITED STATES  
DEPARTMENT OF THE INTERIOR  
GEOLOGICAL SURVEY

ARGYLE QUADRANGLE  
IOWA—MISSOURI  
7.5 MINUTE SERIES (TOPOGRAPHIC)



Mapped, edited, and published by the Geological Survey  
Control by USGS and NOS/NOAA  
Topography by photogrammetric methods from aerial photographs  
taken 1965. Field checked 1968  
Polyconic projection. 10,000-foot grid ticks based on Iowa  
coordinate system, south zone, and Missouri coordinate system  
east zone. 1000-meter Universal Transverse Mercator grid  
ticks, zone 15, shown in blue. 1927 North American Datum  
To place on the predicted North American Datum 1983  
move the projection lines 1 meter north and 12 meters  
east as shown by dashed corner ticks  
Fine red dashed lines indicate selected fence and field lines where  
generally visible on aerial photographs. This information is unchecked  
There may be private inholdings within the boundaries of  
the National or State reservations shown on this map



THIS MAP COMPLIES WITH NATIONAL MAP ACCURACY STANDARDS  
FOR SALE BY U. S. GEOLOGICAL SURVEY, DENVER, COLORADO 80225, OR RESTON, VIRGINIA 22092,  
IOWA GEOLOGICAL SURVEY, IOWA CITY, IOWA 52240  
AND THE DIVISION OF GEOLOGY AND LAND SURVEY  
MISSOURI DEPARTMENT OF NATURAL RESOURCES, ROLLA, MISSOURI 65401  
A FOLDER DESCRIBING TOPOGRAPHIC MAPS AND SYMBOLS IS AVAILABLE ON REQUEST



ROAD CLASSIFICATION  
Primary highway, hard surface  
Secondary highway, hard surface  
Light-duty road, hard or improved surface  
Unimproved road  
Interstate Route  
U. S. Route  
State Route

ARGYLE, IOWA—MO.  
N4030—W9130/7.5  
1968  
PHOTOREVISED 1982  
DMA 7665 II SE—SERIES V876

JUN 27 1983