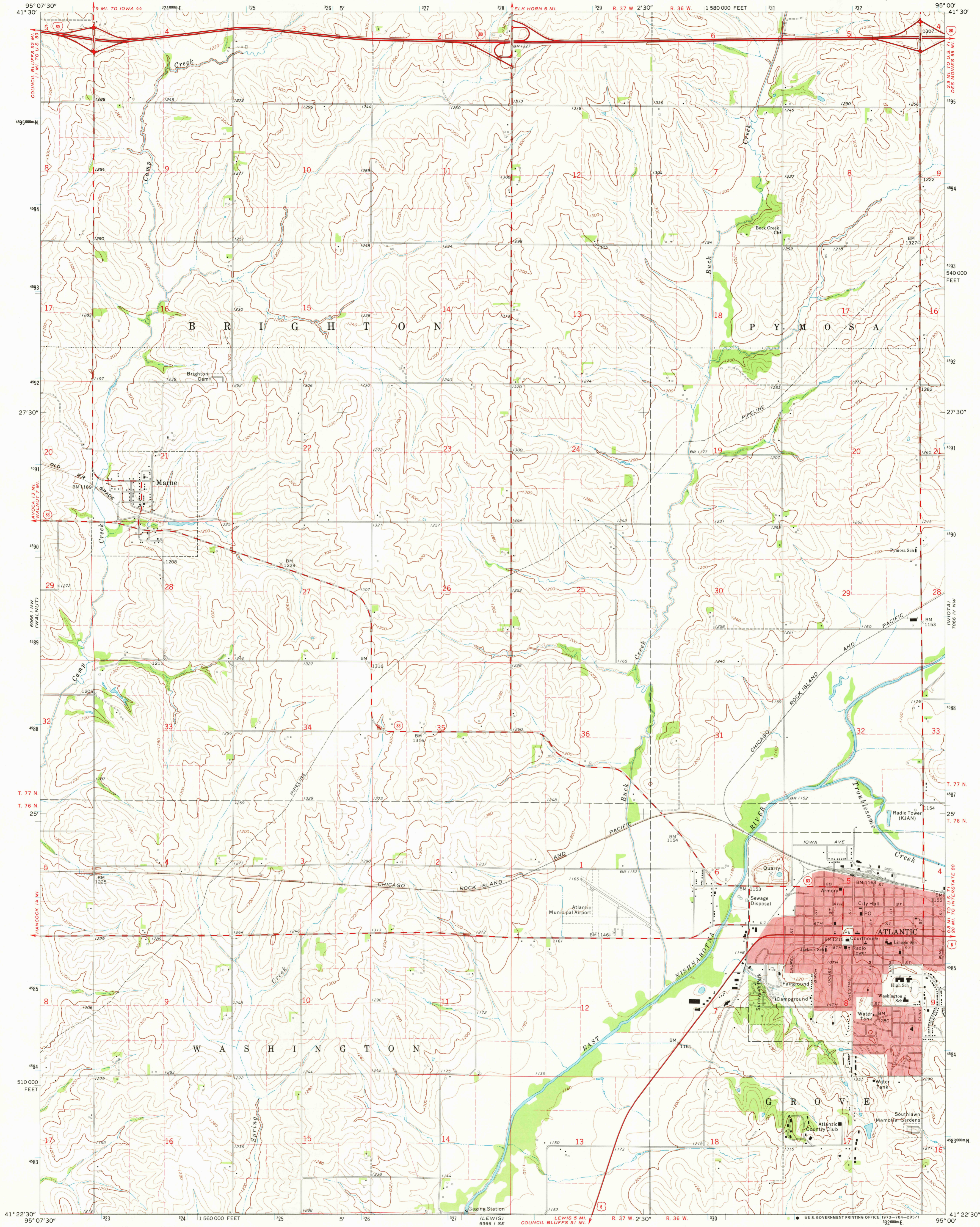


UNITED STATES
DEPARTMENT OF THE INTERIOR
GEOLOGICAL SURVEY

ATLANTIC QUADRANGLE
IOWA—CASS CO.
7.5 MINUTE SERIES (TOPOGRAPHIC)

7087 III
AUBURN 162 5000



Mapped, edited, and published by the Geological Survey

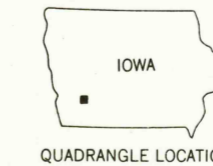
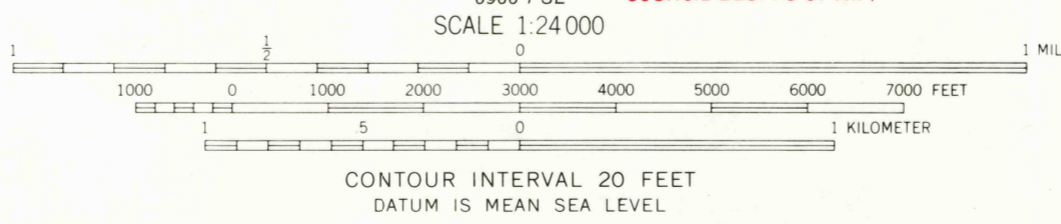
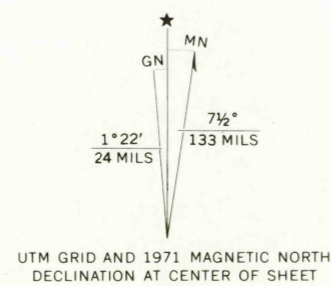
Control by USGS and USC&GS

Topography by photogrammetric methods from aerial photographs taken 1966. Field checked 1971

Polyconic projection. 1927 North American datum 10,000-foot grid based on Iowa coordinate system, south zone 1000-meter Universal Transverse Mercator grid ticks, zone 15, shown in blue

Red tint indicates area in which only landmark buildings are shown

Fine red dashed lines indicate selected fence and field lines where generally visible on aerial photographs. This information is unchecked



ROAD CLASSIFICATION	
Primary highway, hard surface	Light-duty road, hard or improved surface
Secondary highway, hard surface	Unimproved road
Interstate Route	U.S. Route
	State Route

USGS
HISTORICAL FILE
TOPOGRAPHIC DIVISION

ATLANTIC, IOWA
N4122.5—W9500/7.5

1971

AMS 6966 I NE—SERIES V876

THIS MAP COMPLIES WITH NATIONAL MAP ACCURACY STANDARDS
FOR SALE BY U. S. GEOLOGICAL SURVEY, DENVER, COLORADO 80225, OR WASHINGTON, D. C. 20242
AND BY THE IOWA GEOLOGICAL SURVEY, IOWA CITY, IOWA 52240
A FOLDER DESCRIBING TOPOGRAPHIC MAPS AND SYMBOLS IS AVAILABLE ON REQUEST

DEC 10 1971

Dargatzis

2500

50 plane