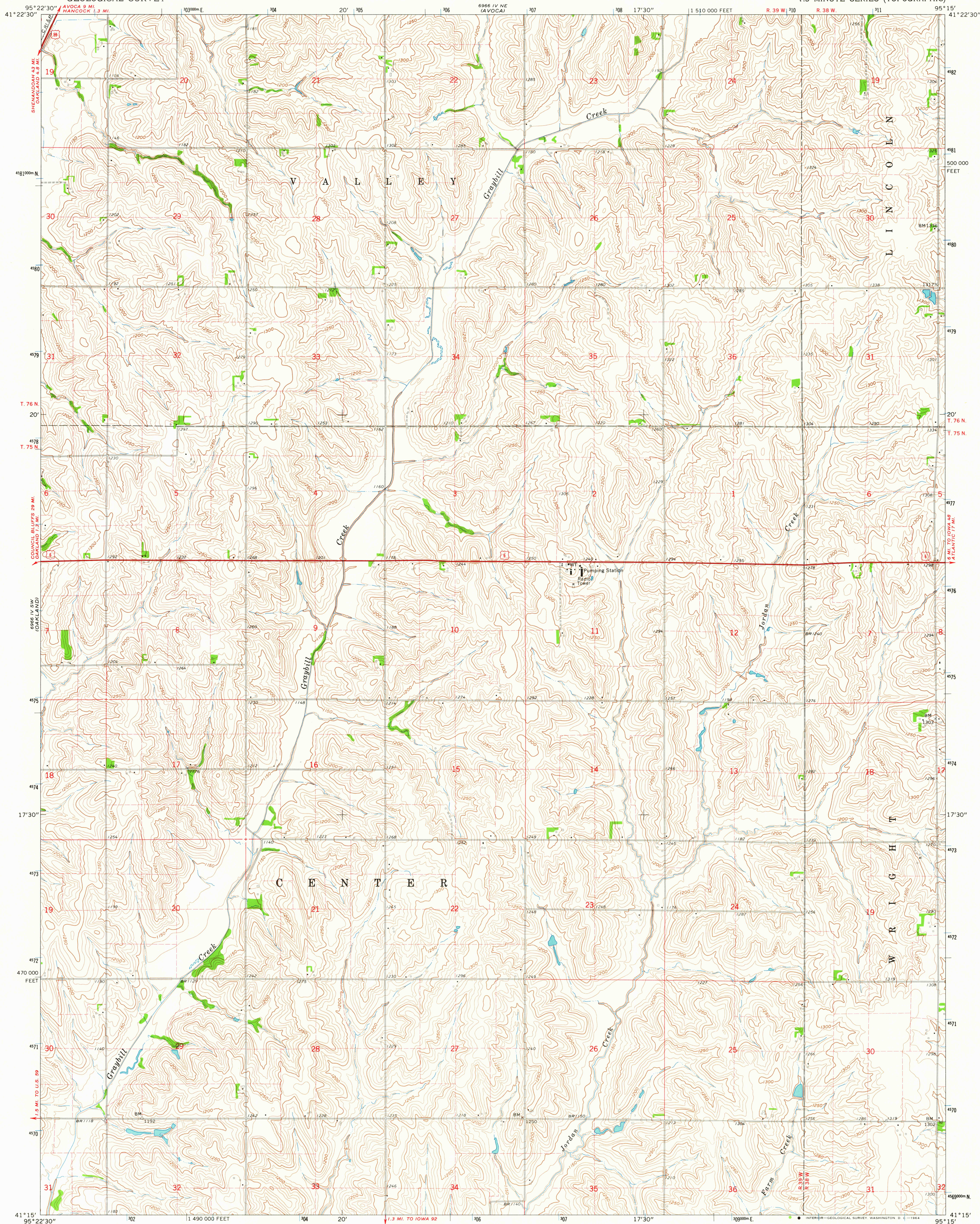


UNITED STATES  
DEPARTMENT OF THE INTERIOR  
GEOLOGICAL SURVEY

AVOCA SE QUADRANGLE  
IOWA—POTTAWATTAMIE CO.  
7.5 MINUTE SERIES (TOPOGRAPHIC)



Mapped, edited, and published by the Geological Survey

Control by USGS and USC&GS

Topography by photogrammetric methods from aerial

photographs taken 1961. Field checked 1963

Polyconic projection. 1927 North American datum

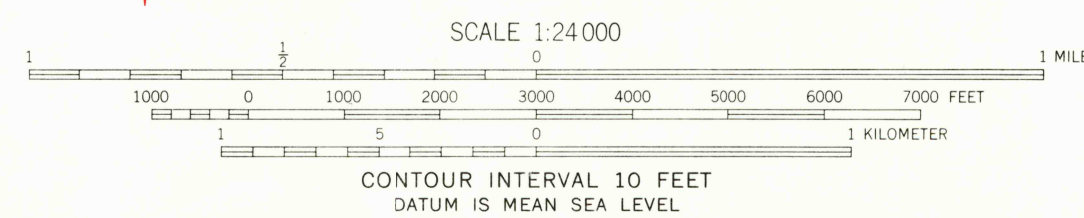
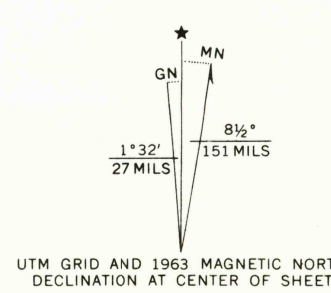
10,000-foot grid based on Iowa coordinate system, south zone

1000-meter Universal Transverse Mercator grid ticks,

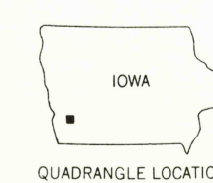
zone 15, shown in blue

Fine red dashed lines indicate selected fence and field lines where

generally visible on aerial photographs. This information is unchecked



USGS  
Historical File  
Topographic Division



ROAD CLASSIFICATION  
Heavy-duty ——— Light-duty ———  
Unimproved dirt ———  
U.S. Route

THIS MAP COMPLIES WITH NATIONAL MAP ACCURACY STANDARDS  
FOR SALE BY U. S. GEOLOGICAL SURVEY, DENVER 25, COLORADO OR WASHINGTON 25, D. C.  
AND BY THE IOWA GEOLOGICAL SURVEY, IOWA CITY, IOWA  
A FOLDER DESCRIBING TOPOGRAPHIC MAPS AND SYMBOLS IS AVAILABLE ON REQUEST

AVOCA SE, IOWA  
N4115—W9515/7.5

1963

AMS 6966 IV SE—SERIES V876

JUL 14 1964

2115