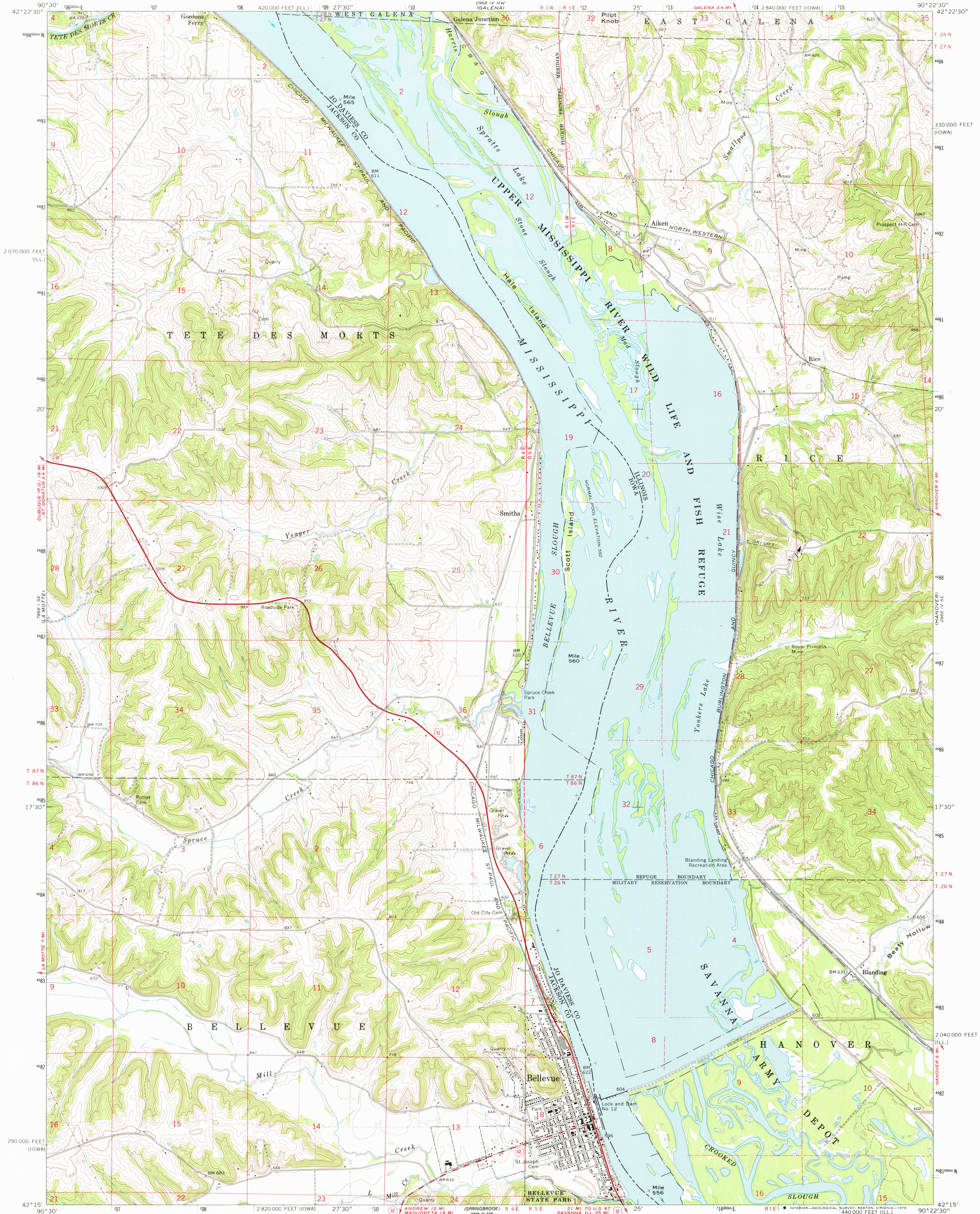


UNITED STATES
DEPARTMENT OF THE INTERIOR
GEOLOGICAL SURVEY



BELLEVUE QUADRANGLE
IOWA—ILLINOIS
7.5 MINUTE SERIES (TOPOGRAPHIC)

2868 IV NE
(SCALE MOUND WEST)



Mapped, edited, and published by the Geological Survey

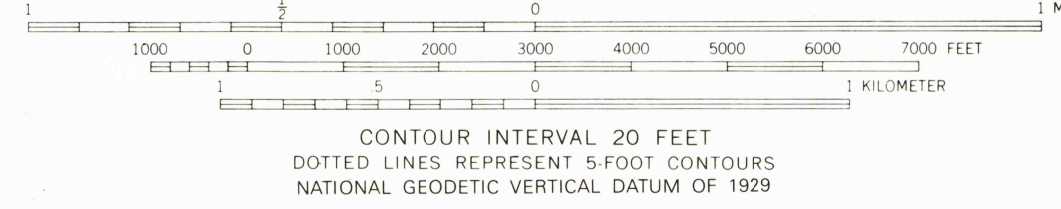
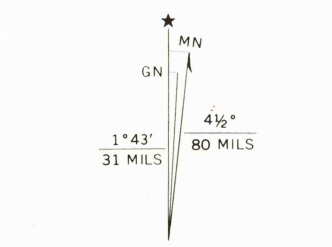
Control by USGS and USC&GS

Topography by photogrammetric methods from aerial photographs taken 1966 and planetable surveys 1968

Polyconic projection. 1927 North American datum
10,000-foot grids based on Iowa coordinate system, north zone and Illinois coordinate system, west zone
1000-meter Universal Transverse Mercator grid ticks, zone 15, shown in blue

Fine red dashed lines indicate selected fence and field lines where generally visible on aerial photographs. This information is unchecked

There may be private inholdings within the boundaries of the National or State reservations shown on this map



THIS MAP COMPLIES WITH NATIONAL MAP ACCURACY STANDARDS
FOR SALE BY U. S. GEOLOGICAL SURVEY, DENVER, COLORADO 80225, OR RESTON, VIRGINIA 22092
IOWA GEOLOGICAL SURVEY, IOWA CITY, IOWA 52240,
AND STATE GEOLOGICAL SURVEY, URBANA, ILLINOIS 61801
A FOLDER DESCRIBING TOPOGRAPHIC MAPS AND SYMBOLS IS AVAILABLE ON REQUEST



ROAD CLASSIFICATION
Primary highway, all weather, hard surface
Secondary highway, all weather, hard surface
Light-duty road, all weather, improved surface
Unimproved road, fair or dry weather
U. S. Route
State Route

BELLEVUE, IOWA—ILL.

N4215—W9022.5/7.5

1968

AMS 2968 IV SW—SERIES V863

FEB 13 1980

1800