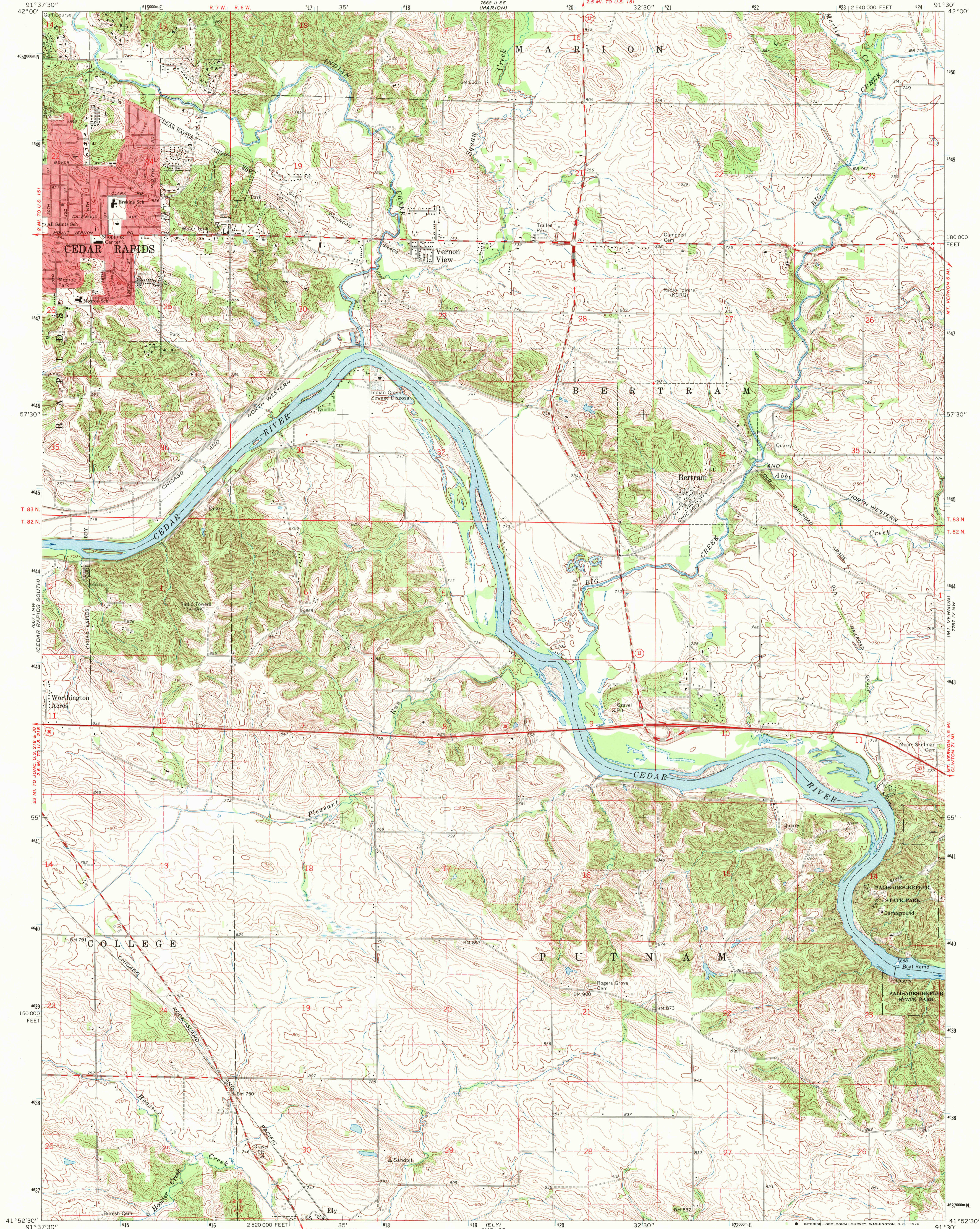
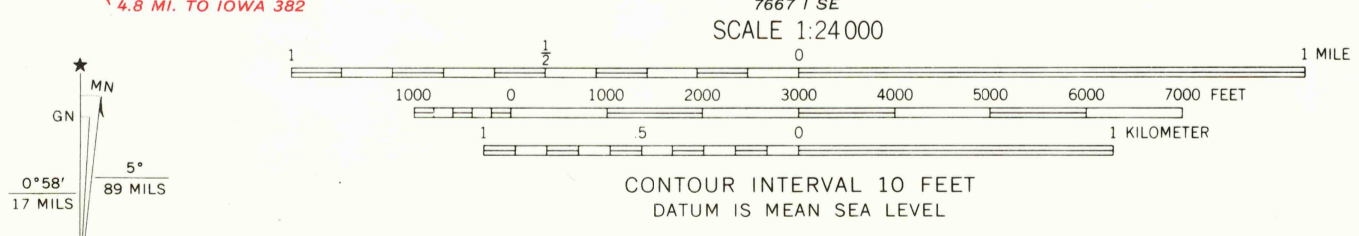


UNITED STATES
DEPARTMENT OF THE INTERIOR
GEOLOGICAL SURVEY

BERTRAM QUADRANGLE
IOWA—LINN CO.
7.5 MINUTE SERIES (TOPOGRAPHIC)



Maped, edited, and published by the Geological Survey
Control by USGS, USC&GS, and Iowa Geodetic Survey
Topography by photogrammetric methods from aerial
photographs taken 1965. Field checked 1968
Polyconic projection. 1927 North American datum
10,000-foot grid based on Iowa coordinate system, north zone
1000-meter Universal Transverse Mercator grid ticks,
zone 15, shown in blue
Red tint indicates area in which only landmark buildings are shown
Fine red dashed lines indicate selected fence and field lines where
generally visible on aerial photographs. This information is unchecked



USGS
Historical File
Topographic Division

ROAD CLASSIFICATION
Primary highway, all weather,
hard surface
Secondary highway, all weather,
hard surface
Light-duty road, all weather,
improved surface
Unimproved road, fair or dry
weather
U. S. Route
State Route



U.S.G.S.
FILE COPY
TOPOGRAPHIC DIVISION

BERTRAM, IOWA
N4152.5—W9130.7.5

1968
AMS 7667 1 NE—SERIES V876

SEP 10 1970

2745