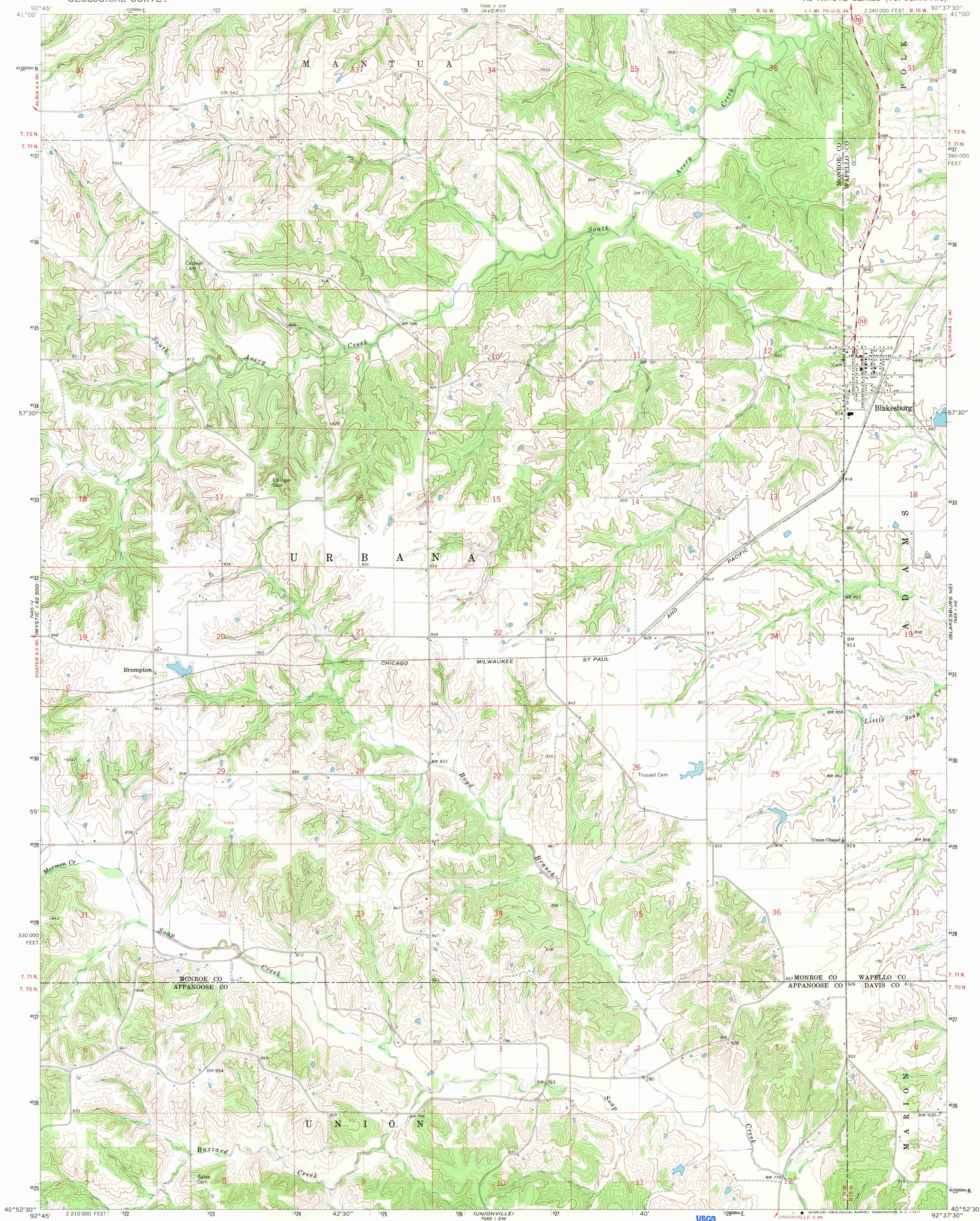


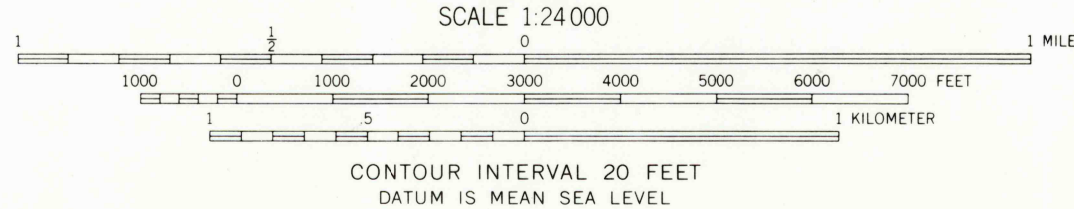
UNITED STATES  
DEPARTMENT OF THE INTERIOR  
GEOLOGICAL SURVEY

BLAKESBURG QUADRANGLE  
IOWA  
7.5 MINUTE SERIES (TOPOGRAPHIC)



Mapped, edited, and published by the Geological Survey  
Control by USGS and USC&GS  
Topography by photogrammetric methods from aerial  
photographs taken 1964. Field checked 1968  
Polyconic projection. 1927 North American datum.  
10,000-foot grid based on Iowa coordinate system, south zone  
1000-meter Universal Transverse Mercator grid ticks,  
zone 15, shown in blue  
Fine red dashed lines indicate selected fence and field lines where  
generally visible on aerial photographs. This information is unchecked

UTM GRID AND 1968 MAGNETIC NORTH  
DECLINATION AT CENTER OF SHEET



USGS  
Historical File  
Topographic Division

ROAD CLASSIFICATION  
Secondary highway, all weather, Light-duty road, all weather,  
hard surface  
Unimproved road, fair or dry  
weather  
State Route

BLAKESBURG, IOWA  
N4052.5—W9237.5/7.5  
1968  
AMS 7465 1 NW—SERIES V876

APR 9 1971

2200

U.S.G.S.

FILE COPY  
TOPOGRAPHIC DIVISION