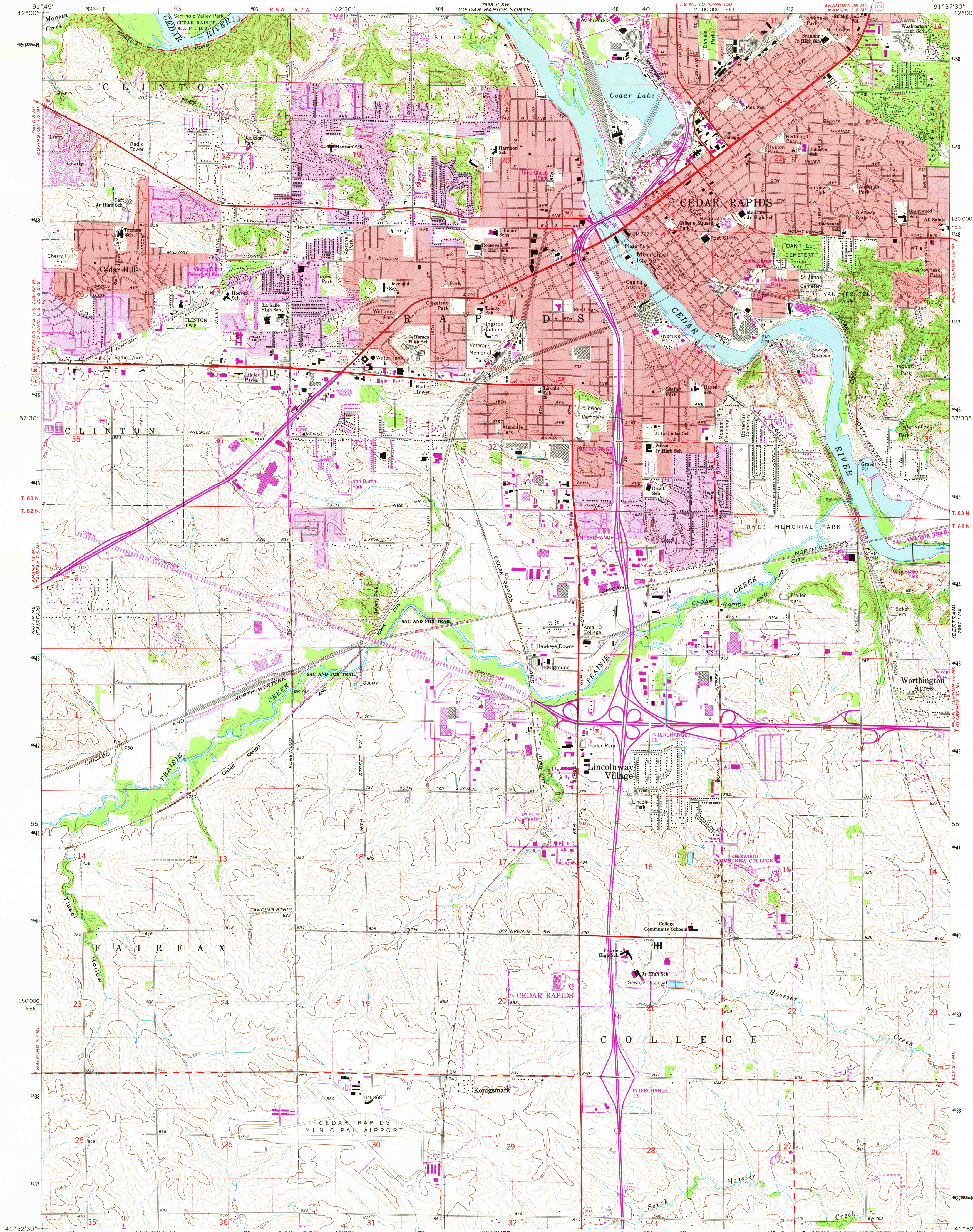


UNITED STATES  
DEPARTMENT OF THE INTERIOR  
GEOLOGICAL SURVEY

STATE OF IOWA  
IOWA GEOLOGICAL SURVEY

CEDAR RAPIDS SOUTH QUADRANGLE  
IOWA—LINN CO.  
7.5 MINUTE SERIES (TOPOGRAPHIC)



Mapped, edited, and published by the Geological Survey  
Control by USGS and NOS/NOAA  
Topography by photogrammetric methods from aerial photographs  
taken 1965. Field checked 1967  
Polyconic projection. 10,000-foot grid ticks based on Iowa  
coordinate system, north zone. 1000-meter Universal Transverse  
Mercator grid ticks, zone 15, shown in blue. 1927 North  
American Datum. To place on the predicted North American  
Datum 1983 move the projection lines 3 meters north and  
14 meters east as shown by dashed corner ticks  
Fine red dashed lines indicate selected fence and field lines where  
generally visible on aerial photographs. This information is updated  
Red tint indicates area in which only landmark buildings are shown  
There may be private inholdings within the boundaries of  
the National or State reservations shown on this map

UTM GRID AND 1982 MAGNETIC NORTH  
DECLINATION AT CENTER OF SHEET

SCALE 1:24,000  
1 1000 0 1000 2000 3000 4000 5000 6000 7000 FEET  
1 KILOMETER  
CONTOUR INTERVAL 10 FEET  
NATIONAL GEODETIC VERTICAL DATUM OF 1929

THIS MAP COMPLIES WITH NATIONAL MAP ACCURACY STANDARDS  
FOR SALE BY U.S. GEOLOGICAL SURVEY, DENVER, COLORADO 80225, OR RESTON, VIRGINIA 22092  
AND BY THE IOWA GEOLOGICAL SURVEY, IOWA CITY, IOWA 52240  
A FOLDER DESCRIBING TOPOGRAPHIC MAPS AND SYMBOLS IS AVAILABLE ON REQUEST



QUADRANGLE LOCATION

ROAD CLASSIFICATION  
Heavy-duty ——— Light-duty ———  
Medium-duty ——— Unimproved dirt ———  
U.S. Route ——— State Route ———  
Interstate Route ———

CEDAR RAPIDS SOUTH, IOWA  
N4152.5—W9137.5/7.5  
1967  
PHOTOREVISED 1982  
DMA 7667 I NW—SERIES V876

Revisions shown in purple and woodland compiled from  
aerial photographs taken 1980 and other sources. This  
information not field checked. Map edited 1982  
Purple tint indicates extension of urban areas

SEP 20 1982