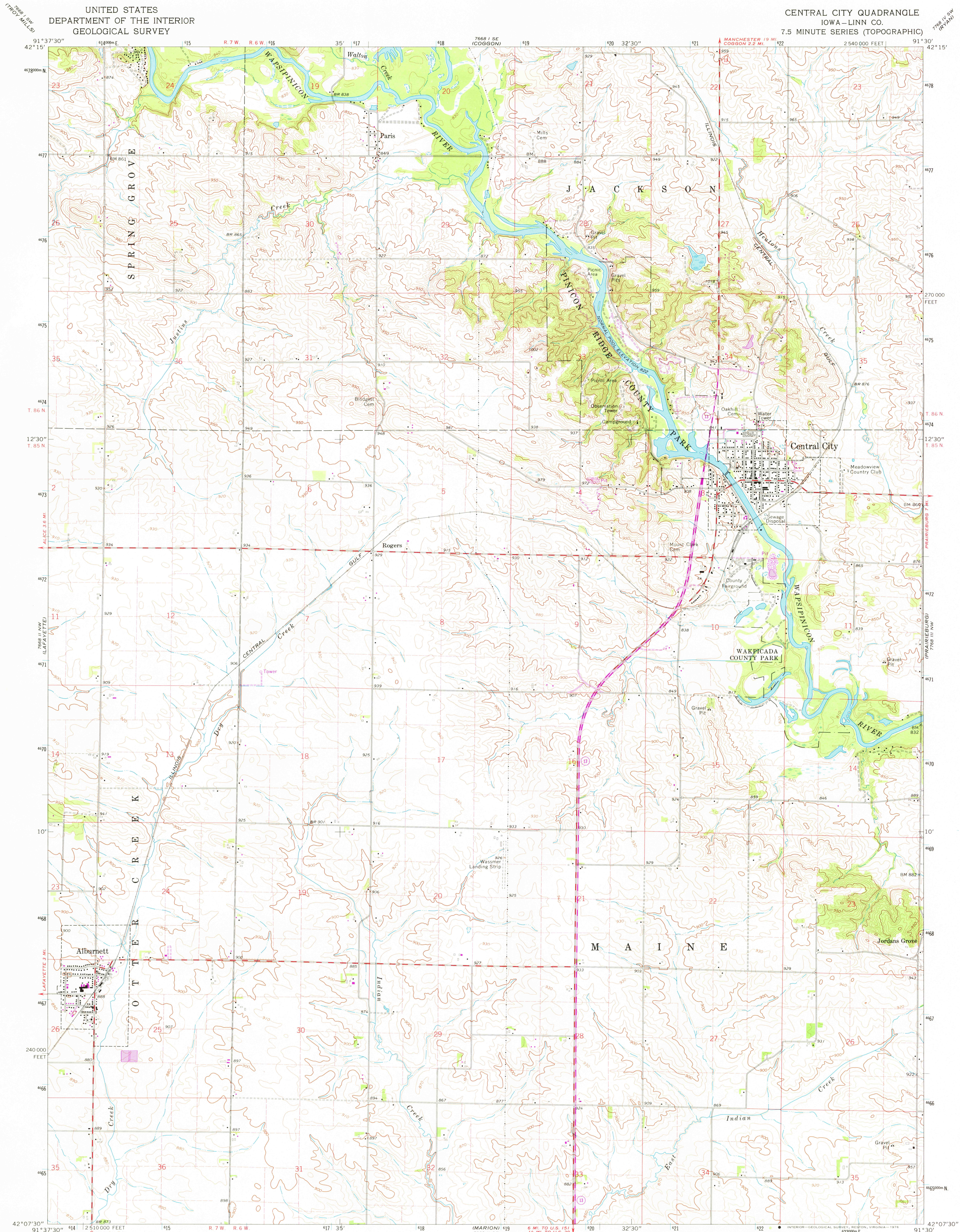


UNITED STATES
DEPARTMENT OF THE INTERIOR
GEOLOGICAL SURVEY

CENTRAL CITY QUADRANGLE
IOWA—LINN CO.
7.5 MINUTE SERIES (TOPOGRAPHIC)



Mapped, edited, and published by the Geological Survey

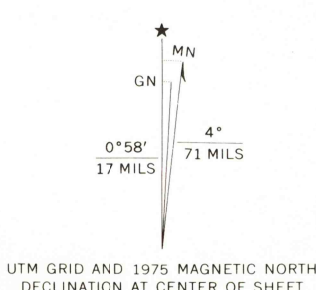
Control by USGS and USC&GS

Topography by photogrammetric methods from aerial photographs taken 1965. Field checked 1968

Polyconic projection. 1927 North American datum. 10,000-foot grid based on Iowa coordinate system, north zone. 1000-metre Universal Transverse Mercator grid ticks, zone 15, shown in blue.

Fine red dashed lines indicate selected fence and field lines where generally visible on aerial photographs. This information is unchecked.

Revisions shown in purple compiled from aerial photographs taken 1975. This information not field checked.



CONTOUR INTERVAL 10 FEET
NATIONAL GEODETIC VERTICAL DATUM OF 1929

THIS MAP COMPLIES WITH NATIONAL MAP ACCURACY STANDARDS
FOR SALE BY U.S. GEOLOGICAL SURVEY, DENVER, COLORADO 80225, OR RESTON, VIRGINIA 22092
AND BY THE IOWA GEOLOGICAL SURVEY, IOWA CITY, IOWA 52240
A FOLDER DESCRIBING TOPOGRAPHIC MAPS AND SYMBOLS IS AVAILABLE ON REQUEST

ROAD CLASSIFICATION
Secondary highway, all weather, Light-duty road, all weather, hard surface
Unimproved road, fair or dry weather
State Route



USGS
Historical File
Topographic Division

CENTRAL CITY, IOWA
N4207.5—W9130/7.5

1968
PHOTOREVISED 1975
AMS 7668 II NE—SERIES V876

JAN 11 1977

2650