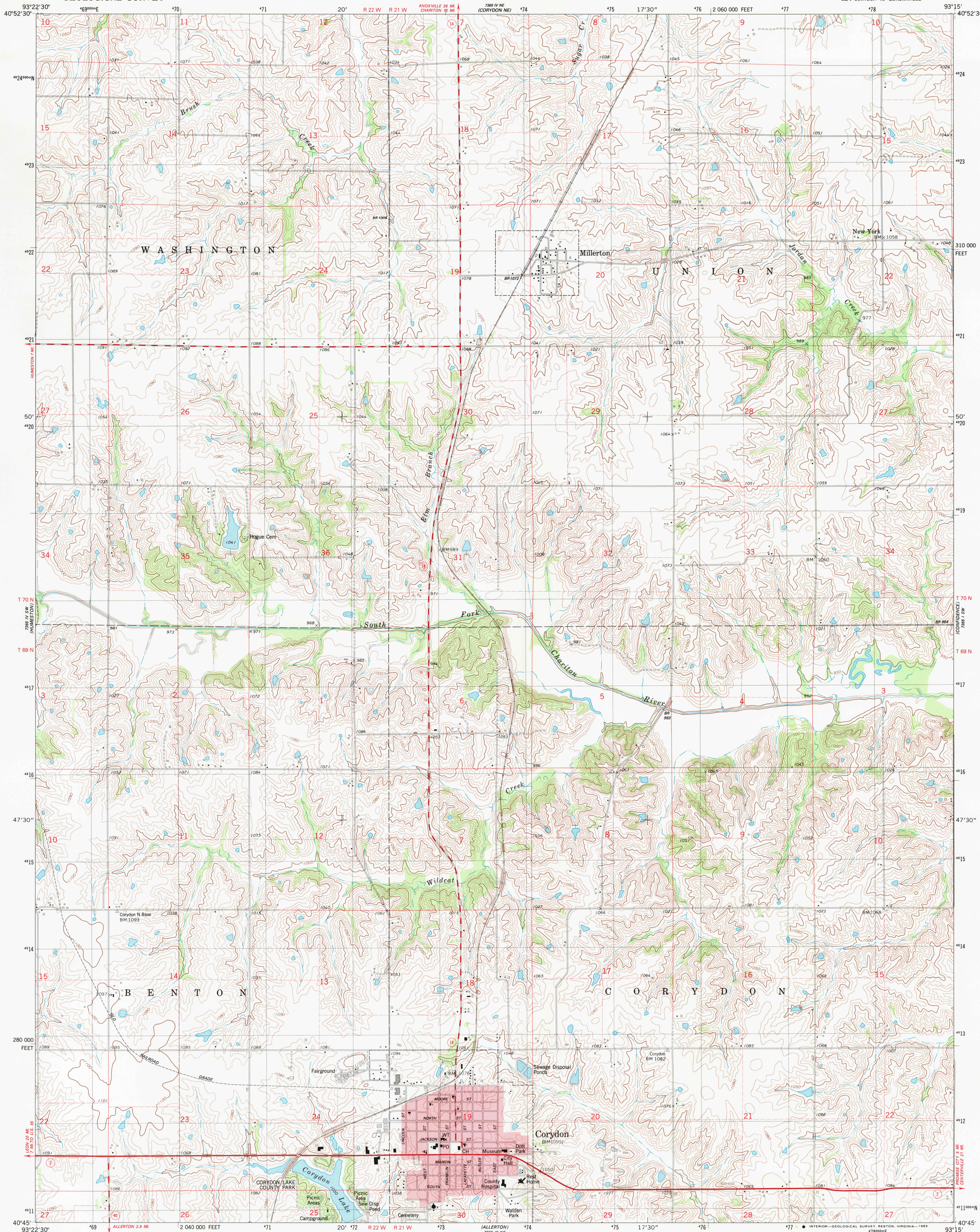


726 1/4 NW  
(2081)

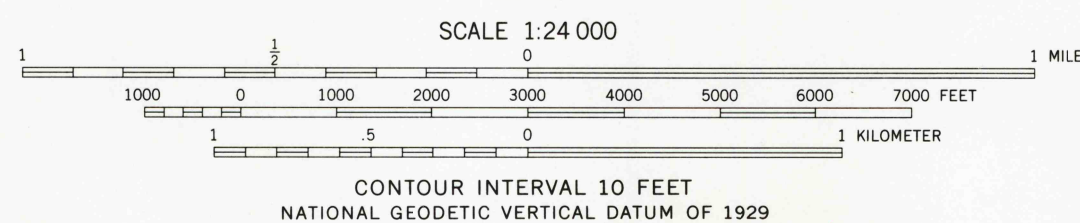
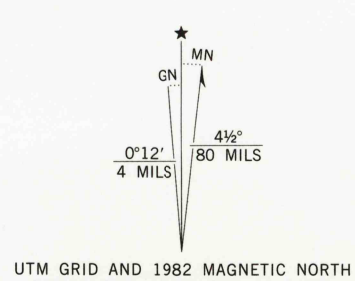
UNITED STATES  
DEPARTMENT OF THE INTERIOR  
GEOLOGICAL SURVEY

CORYDON QUADRANGLE  
IOWA-WAYNE CO.  
7.5 MINUTE SERIES (TOPOGRAPHIC)  
SE/4 CORYDON 15' QUADRANGLE

726 1/4 NW  
RUSSELL



Mapped, edited, and published by the Geological Survey  
Control by USGS and NOS/NOAA  
Topography by photogrammetric methods from aerial photographs  
taken 1975 and 1980. Field checked 1977. Map edited 1982  
Projection and 10,000-foot grid ticks: Iowa coordinate  
system, south zone (Lambert conformal conic)  
1000-meter Universal Transverse Mercator grid, zone 15  
1927 North American Datum  
To place on the predicted North American Datum 1983  
move the projection lines 3 meters north and  
17 meters east as shown by dashed corner ticks  
Red tint indicates areas in which only landmark buildings are shown.  
Fine red dashed lines indicate selected fence and field lines where  
generally visible on aerial photographs. This information is unchecked



ROAD CLASSIFICATION  
Primary highway, hard surface  
Secondary highway, hard surface  
Light-duty road, hard or improved surface  
Unimproved road  
Interstate Route  
U. S. Route  
State Route

CORYDON, IOWA  
SE/4 CORYDON 15' QUADRANGLE  
N4045-W9315/7.5

1982  
DMA 7365 IV SE-SERIES V876

THIS MAP COMPLIES WITH NATIONAL MAP ACCURACY STANDARDS  
FOR SALE BY U. S. GEOLOGICAL SURVEY, DENVER, COLORADO 80225, OR RESTON, VIRGINIA 22092  
AND BY THE IOWA GEOLOGICAL SURVEY, IOWA CITY, IOWA 52240  
A FOLDER DESCRIBING TOPOGRAPHIC MAPS AND SYMBOLS IS AVAILABLE ON REQUEST

FEB 10 1983