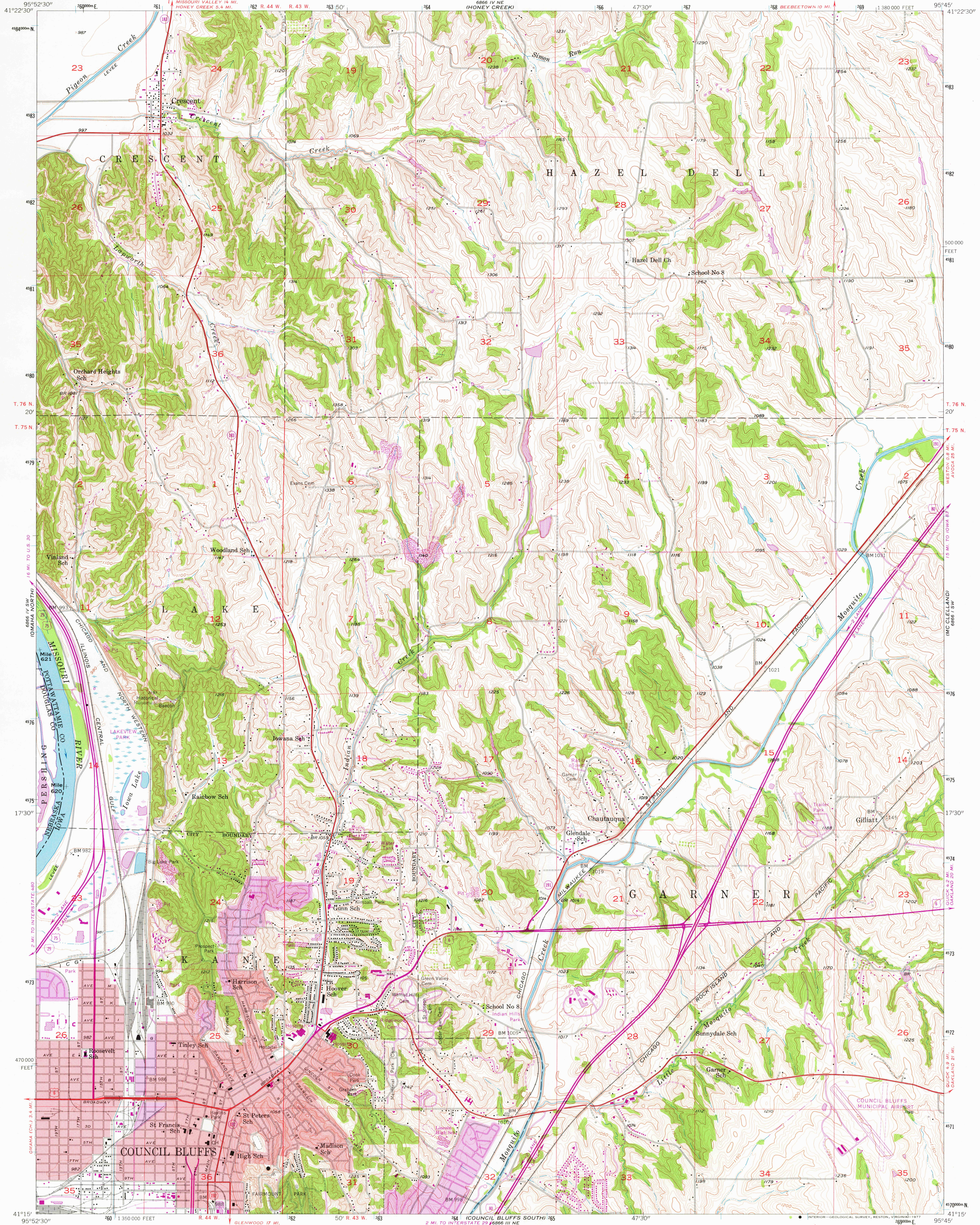
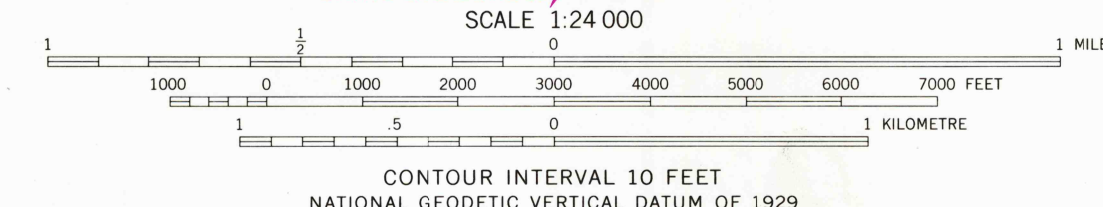
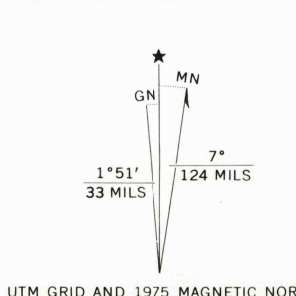


UNITED STATES  
DEPARTMENT OF THE INTERIOR  
GEOLOGICAL SURVEY

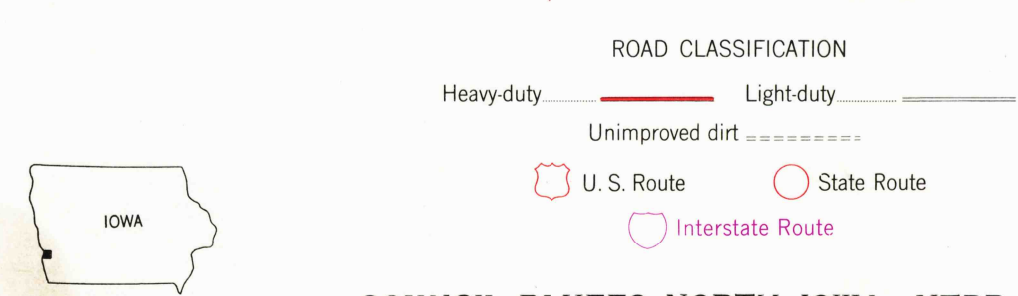
COUNCIL BLUFFS NORTH QUADRANGLE  
IOWA-NEBRASKA  
7.5 MINUTE SERIES (TOPOGRAPHIC)



Maped, edited, and published by the Geological Survey  
Control by USGS, USC&S, and USCE  
Topography from aerial photographs by Kelsh plotter  
Aerial photographs taken 1952. Field check 1956  
Polyconic projection. 1927 North American datum  
10,000-foot grid based on Iowa coordinate system, south zone  
1000-metre Universal Transverse Mercator grid ticks,  
zone 15, shown in blue  
Red tint indicates area in which only landmark buildings are shown  
Revisions shown in purple compiled from aerial photographs  
taken 1969 and 1975. This information not field checked  
Purple tint indicates extension of urban areas



THIS MAP COMPLIES WITH NATIONAL MAP ACCURACY STANDARDS  
FOR SALE BY U.S. GEOLOGICAL SURVEY, DENVER, COLORADO 80225, OR RESTON, VIRGINIA 22092  
AND BY THE IOWA GEOLOGICAL SURVEY, IOWA CITY, IOWA 52240  
A FOLDER DESCRIBING TOPOGRAPHIC MAPS AND SYMBOLS IS AVAILABLE ON REQUEST



COUNCIL BLUFFS NORTH, IOWA-NEBR.  
N 4115—W 9545/7.5  
USGS  
Historical File  
Topographic Division  
1956  
PHOTOREVISED 1969 AND 1975  
AMS 6866 IV SE-SERIES V876

3300  
AUG 05 1977