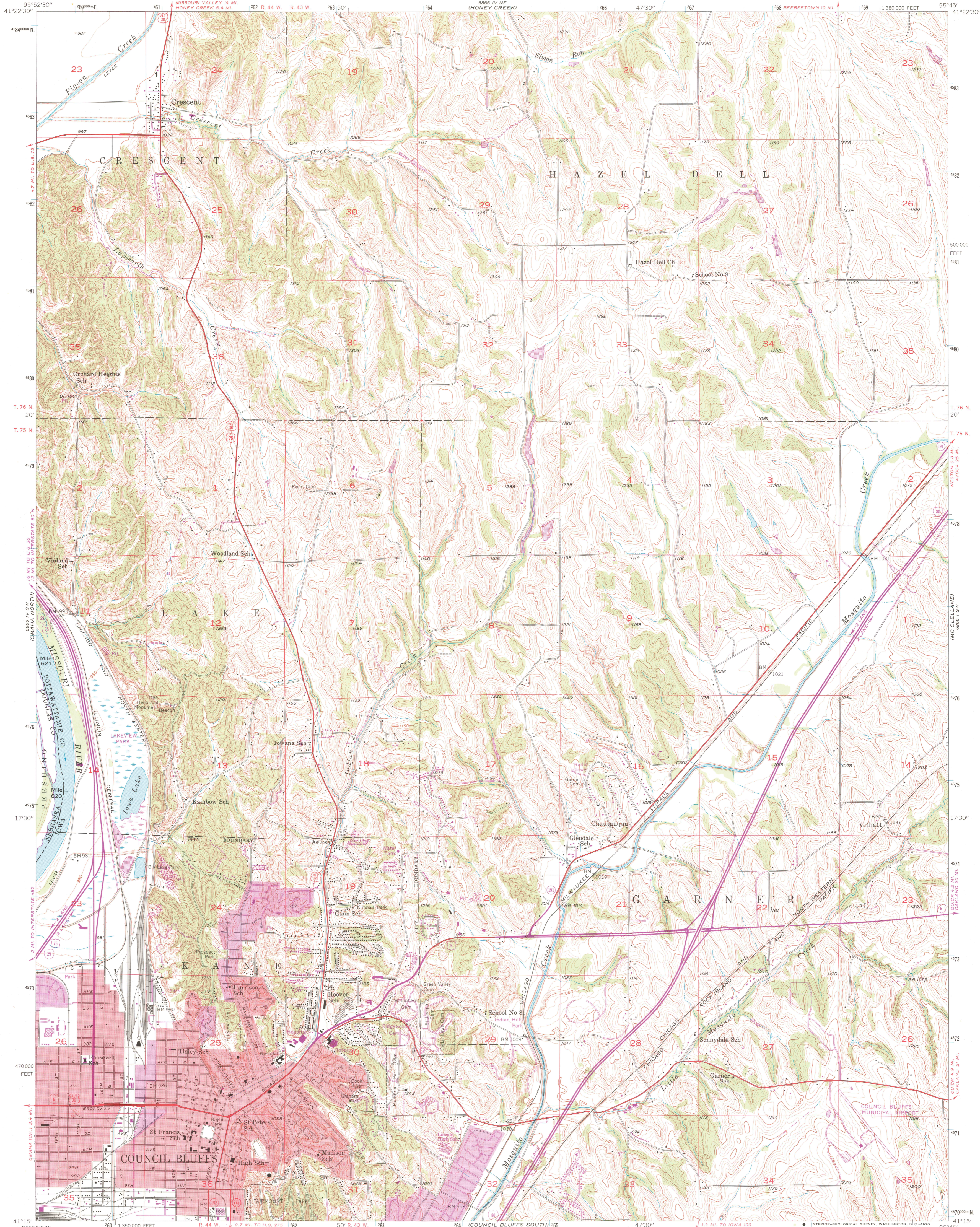
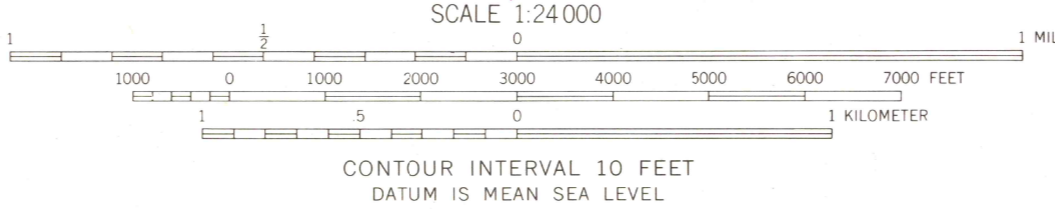
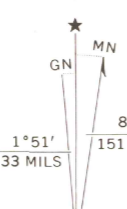


UNITED STATES
DEPARTMENT OF THE INTERIOR
GEOLOGICAL SURVEY

COUNCIL BLUFFS NORTH QUADRANGLE
IOWA-NEBRASKA
7.5 MINUTE SERIES (TOPOGRAPHIC)



Mapped, edited, and published by the Geological Survey
Control by USGS, USCGS, and USCE
Topography from aerial photographs by Kelsch plotter
Aerial photographs taken 1952. Field check 1956
Polyconic projection. 1927 North American datum
10,000-foot grid based on Iowa coordinate system, south zone
1000-meter Universal Transverse Mercator grid ticks,
zone 15, shown in blue
Red tint indicates areas in which only landmark buildings are shown
Revisions shown in purple compiled from aerial photographs
taken 1969. This information not field checked
Purple tint indicates extension of urban areas



ROAD CLASSIFICATION
Heavy-duty Light-duty
Unimproved dirt
U.S. Route State Route
Interstate Route

THIS MAP COMPLIES WITH NATIONAL MAP ACCURACY STANDARDS
FOR SALE BY U.S. GEOLOGICAL SURVEY, DENVER, COLORADO 80225, OR WASHINGTON, D.C. 20242
AND BY THE IOWA GEOLOGICAL SURVEY, IOWA CITY, IOWA 52240
A FOLDER DESCRIBING TOPOGRAPHIC MAPS AND SYMBOLS IS AVAILABLE ON REQUEST

COUNCIL BLUFFS NORTH, IOWA-NEBR.
N4115-W9545/7.5

1956
PHOTOREVISED 1969
AMS 6866 IV SE-SERIES V876