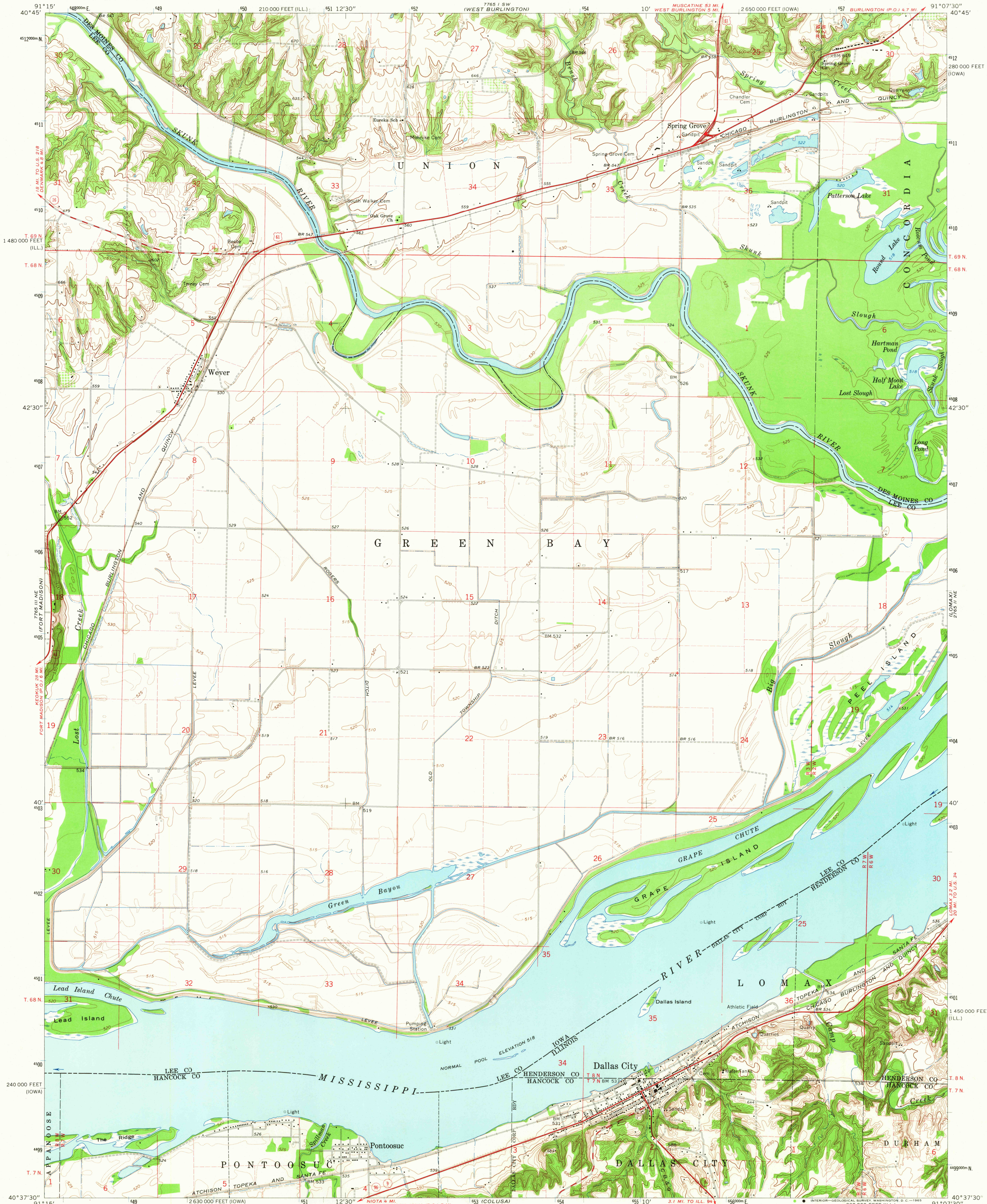
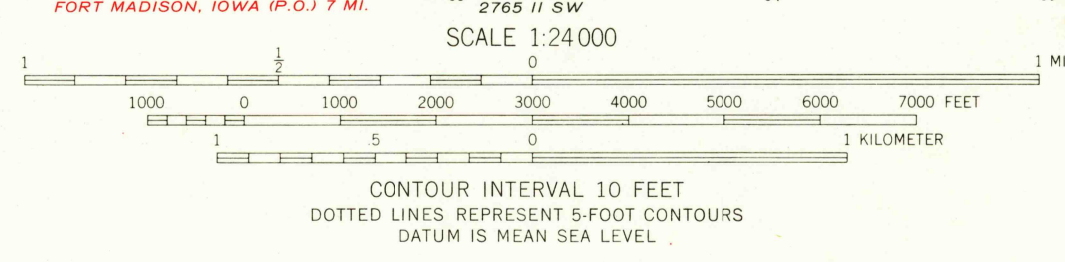


UNITED STATES  
DEPARTMENT OF THE INTERIOR  
GEOLOGICAL SURVEY

DALLAS CITY QUADRANGLE  
IOWA-ILLINOIS  
7.5 MINUTE SERIES (TOPOGRAPHIC)  
NW 1/4 LOMAX 15' QUADRANGLE



Mapped, edited, and published by the Geological Survey  
Control by USGS and USC&GS  
Topography by photogrammetric methods from aerial  
photographs taken 1962 and planimetric surveys 1964  
Polyconic projection. 1927 North American datum  
10,000-foot grids based on Iowa coordinate system, south zone  
and Illinois coordinate system, west zone  
1000-meter Universal Transverse Mercator grid ticks,  
zone 15, shown in blue  
Fine red dashed lines indicate selected fence and field lines where  
generally visible on aerial photographs. This information is unchecked



THIS MAP COMPLIES WITH NATIONAL MAP ACCURACY STANDARDS  
FOR SALE BY U.S. GEOLOGICAL SURVEY, DENVER, COLORADO 80225 OR WASHINGTON, D. C. 20242.  
THE IOWA GEOLOGICAL SURVEY, IOWA CITY, IOWA,  
AND STATE GEOLOGICAL SURVEY, URBANA, ILLINOIS  
A FOLDER DESCRIBING TOPOGRAPHIC MAPS AND SYMBOLS IS AVAILABLE ON REQUEST



ROAD CLASSIFICATION	
Heavy-duty	Light-duty
Medium-duty	Unimproved dirt
U.S. Route	State Route

DALLAS CITY, IOWA-ILL.  
NW 1/4 LOMAX 15' QUADRANGLE  
N4037.5-W9107.5/7.5  
1964  
AMS 7765 II NW-SERIES V876  
U.S.G.S. FILE COPY  
TOPOGRAPHIC DIVISION

JUL 22 1965