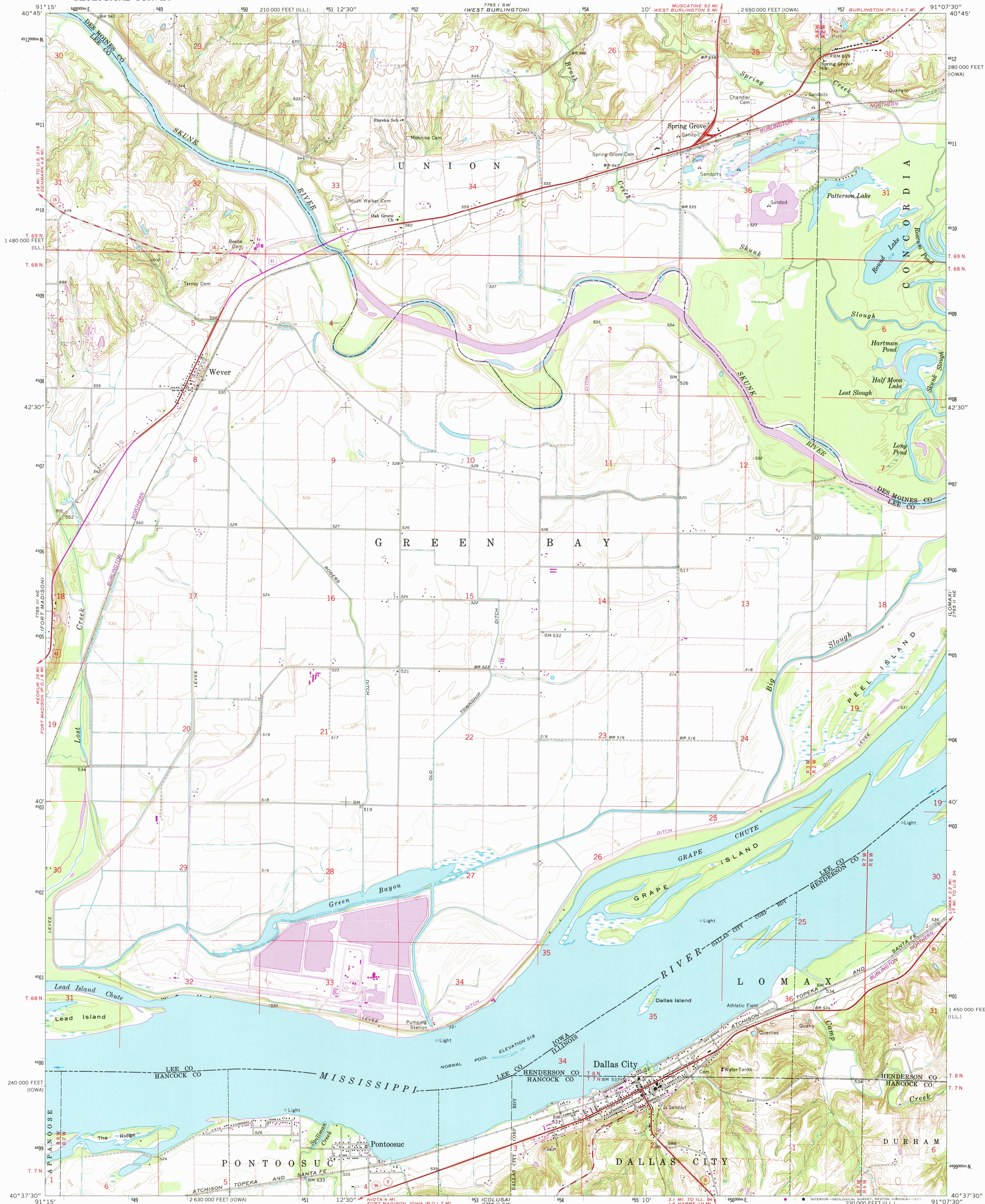


UNITED STATES
DEPARTMENT OF THE INTERIOR
GEOLOGICAL SURVEY

DALLAS CITY QUADRANGLE
IOWA-ILLINOIS
7.5 MINUTE SERIES (TOPOGRAPHIC)



Mapped, edited, and published by the Geological Survey

Control by USGS and USC&GS

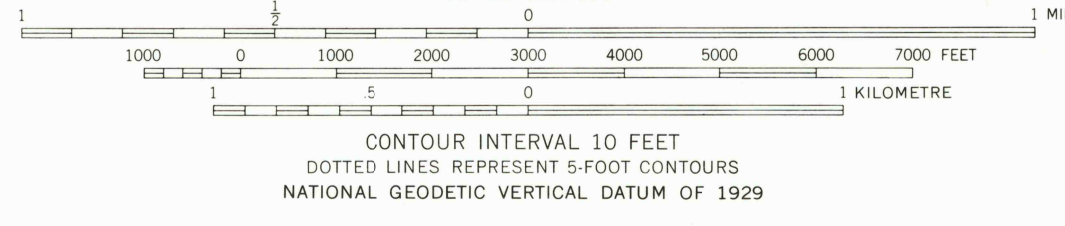
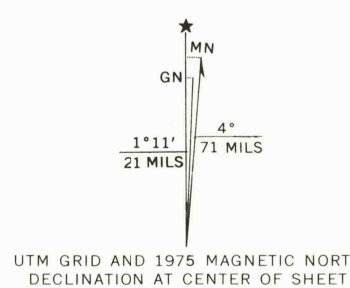
Topography by photogrammetric methods from aerial photographs taken 1962 and planimetric surveys 1964

Polyconic projection. 1927 North American datum 10,000-foot grids based on Iowa coordinate system, south zone and Illinois coordinate system, west zone

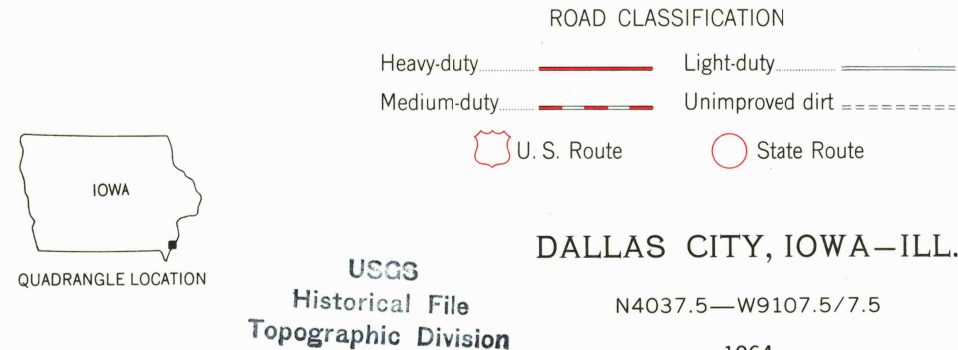
1000-metre Universal Transverse Mercator grid ticks, zone 15, shown in blue

Fine red dashed lines indicate selected fence and field lines where generally visible on aerial photographs. This information is unchecked

Revisions shown in purple compiled from aerial photographs taken 1975. This information not field checked



THIS MAP COMPLIES WITH NATIONAL MAP ACCURACY STANDARDS FOR SALE BY U. S. GEOLOGICAL SURVEY, DENVER, COLORADO 80225, OR RESTON, VIRGINIA 22092 THE IOWA GEOLOGICAL SURVEY, IOWA CITY, IOWA 52240, AND STATE GEOLOGICAL SURVEY, URBANA, ILLINOIS 61801 A FOLDER DESCRIBING TOPOGRAPHIC MAPS AND SYMBOLS IS AVAILABLE ON REQUEST



2800
MAR 22 1978