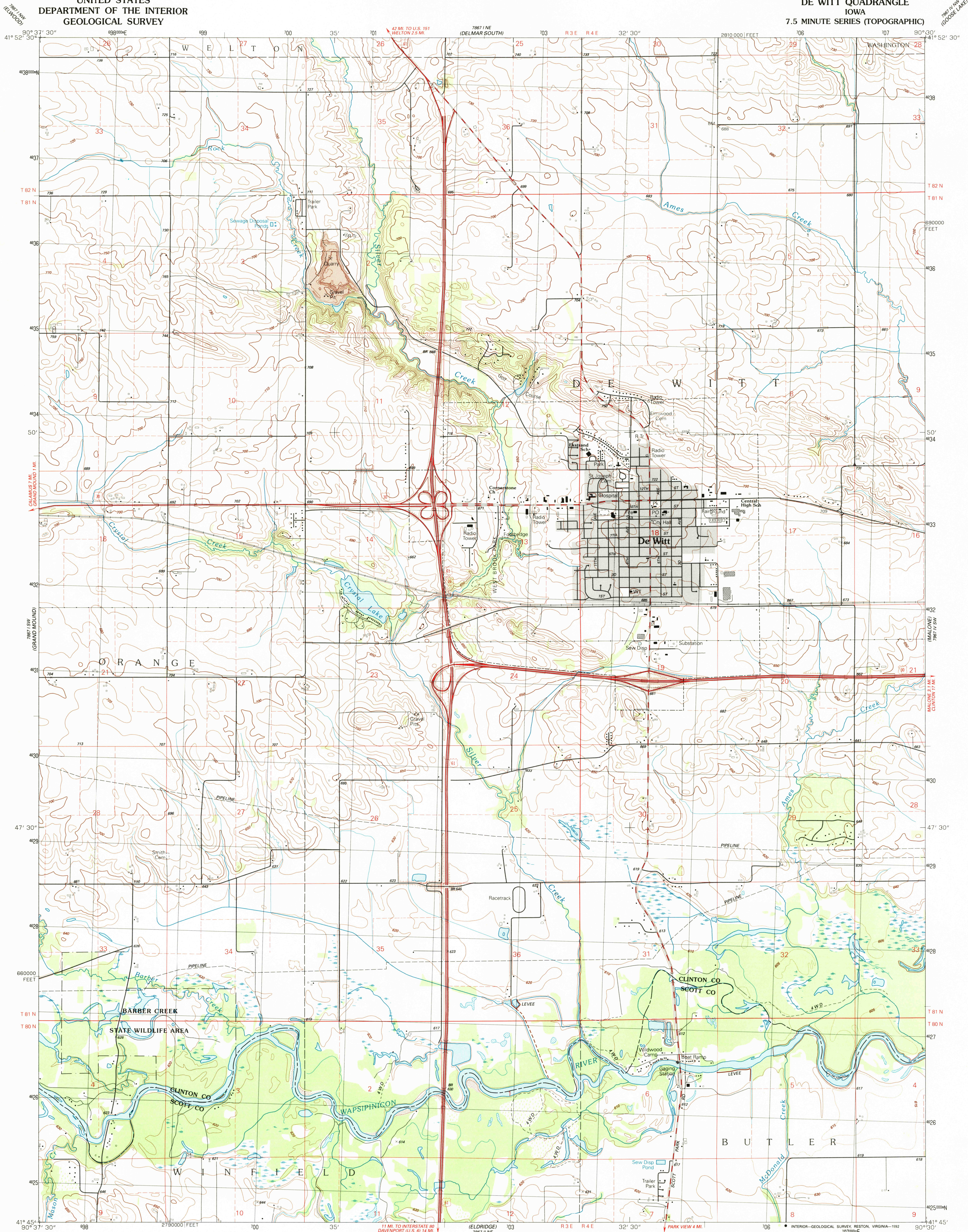


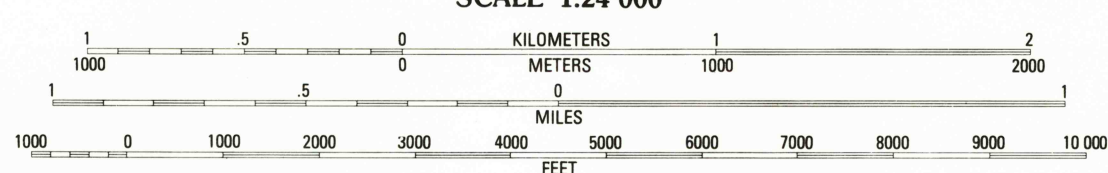
UNITED STATES  
DEPARTMENT OF THE INTERIOR  
GEOLOGICAL SURVEY

DE WITT QUADRANGLE  
IOWA  
7.5 MINUTE SERIES (TOPOGRAPHIC)



Produced by the United States Geological Survey  
Control by USGS and NOS/NOAA  
Compiled from aerial photographs taken 1986  
Field checked 1988. Map edited 1991  
Projection and 10,000-foot grid ticks: Iowa coordinate  
system, south zone (Lambert conformal conic)  
1000-meter Universal Transverse Mercator grid, zone 15  
1927 North American Datum  
The difference between 1927 North American Datum and North  
American Datum of 1983 (NAD 83) for 7.5-minute intersections  
is given in USGS Bulletin 1875. The NAD 83 is shown by  
dashed corner ticks  
There may be private inholdings within the boundaries of  
the National or State reservations shown on this map  
Gray tint indicates area in which only landmark buildings are shown  
Fine red dashed lines indicate selected fence and field lines where  
generally visible on aerial photographs. This information is unchecked

UTM GRID AND 1991 MAGNETIC NORTH  
DECLINATION AT CENTER OF SHEET



ROAD CLASSIFICATION  
Primary highway, hard surface ..... Light-duty road, hard or improved surface .....  
Secondary highway, hard surface ..... Unimproved road .....  
○ Interstate Route ○ U. S. Route ○ State Route

APR 1992

DE WITT, IOWA  
41090-G5-TF-024

1991

DMA 7867 I SE-SERIES V876

THIS MAP COMPLIES WITH NATIONAL MAP ACCURACY STANDARDS  
FOR SALE BY U.S. GEOLOGICAL SURVEY, DENVER, COLORADO 80225, OR RESTON, VIRGINIA 22092  
AND IOWA GEOLOGICAL SURVEY, IOWA CITY, IOWA 52240  
A FOLDER DESCRIBING TOPOGRAPHIC MAPS AND SYMBOLS IS AVAILABLE ON REQUEST