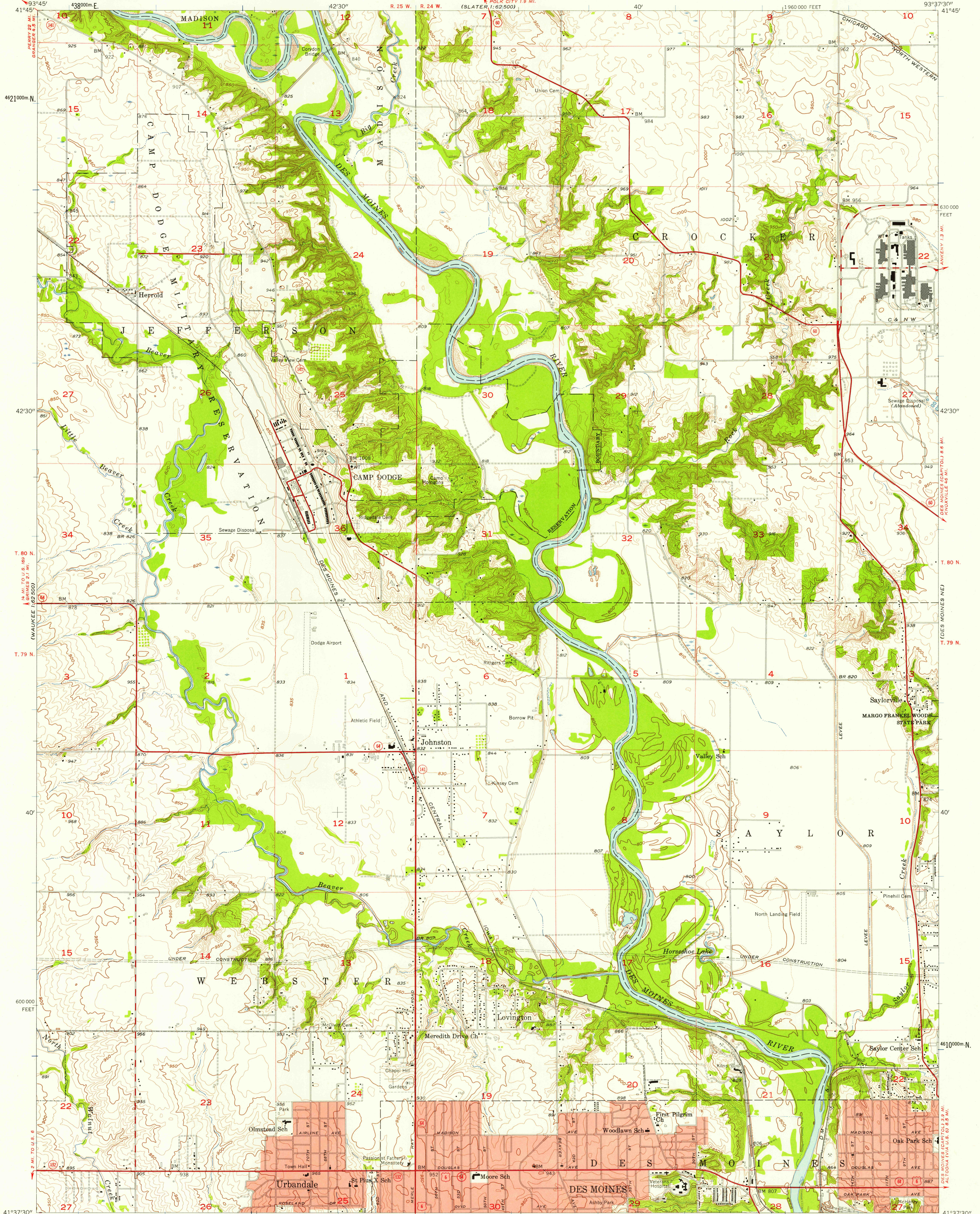


UNITED STATES
DEPARTMENT OF THE INTERIOR
GEOLOGICAL SURVEY

DES MOINES NW QUADRANGLE
IOWA—POLK CO.
7.5 MINUTE SERIES (TOPOGRAPHIC)
NW 1/4 DES MOINES 15' QUADRANGLE



Mapped, edited, and published by the Geological Survey
in cooperation with Polk County and City of Des Moines
Control by USGS, USC&GS, and Iowa Geodetic Survey
Topography from aerial photographs by Kelsch plotter
Aerial photographs taken 1956. Field check 1956
Polyconic projection. 1927 North American datum
10,000-foot grid based on Iowa coordinate system, south zone
1000-meter Universal Transverse Mercator grid ticks,
zone 15, shown in blue
Red tint indicates areas in which only
landmark buildings are shown

TRUE NORTH
MAGNETIC NORTH
APPROXIMATE MEAN
DECLINATION, 1956

SCALE 1:24,000
1 0 1000 2000 3000 4000 5000 6000 7000 FEET
1 0 5 10 KILOMETER
CONTOUR INTERVAL 10 FEET
DOTTED LINES REPRESENT 5-FOOT CONTOURS
DATUM IS MEAN SEA LEVEL
THIS MAP COMPLIES WITH NATIONAL MAP ACCURACY STANDARDS
FOR SALE BY U. S. GEOLOGICAL SURVEY, DENVER 2, COLORADO OR WASHINGTON 25, D. C.
AND BY THE IOWA GEOLOGICAL SURVEY, IOWA CITY, IOWA
A FOLDER DESCRIBING TOPOGRAPHIC MAPS AND SYMBOLS IS AVAILABLE ON REQUEST

USGS
Historical File
Topographic Division
IOWA
QUADRANGLE LOCATION

ROAD CLASSIFICATION
Heavy-duty ——— Light-duty ———
Medium-duty ——— Unimproved dirt ———
U. S. Route ——— State Route ———

DES MOINES NW, IOWA
NW 1/4 DES MOINES 15' QUADRANGLE
N 41°37.5'—W 93°37.5' 7.5
1956

U.S.G.S.
FILE COPY
TOPOGRAPHIC DIVISION