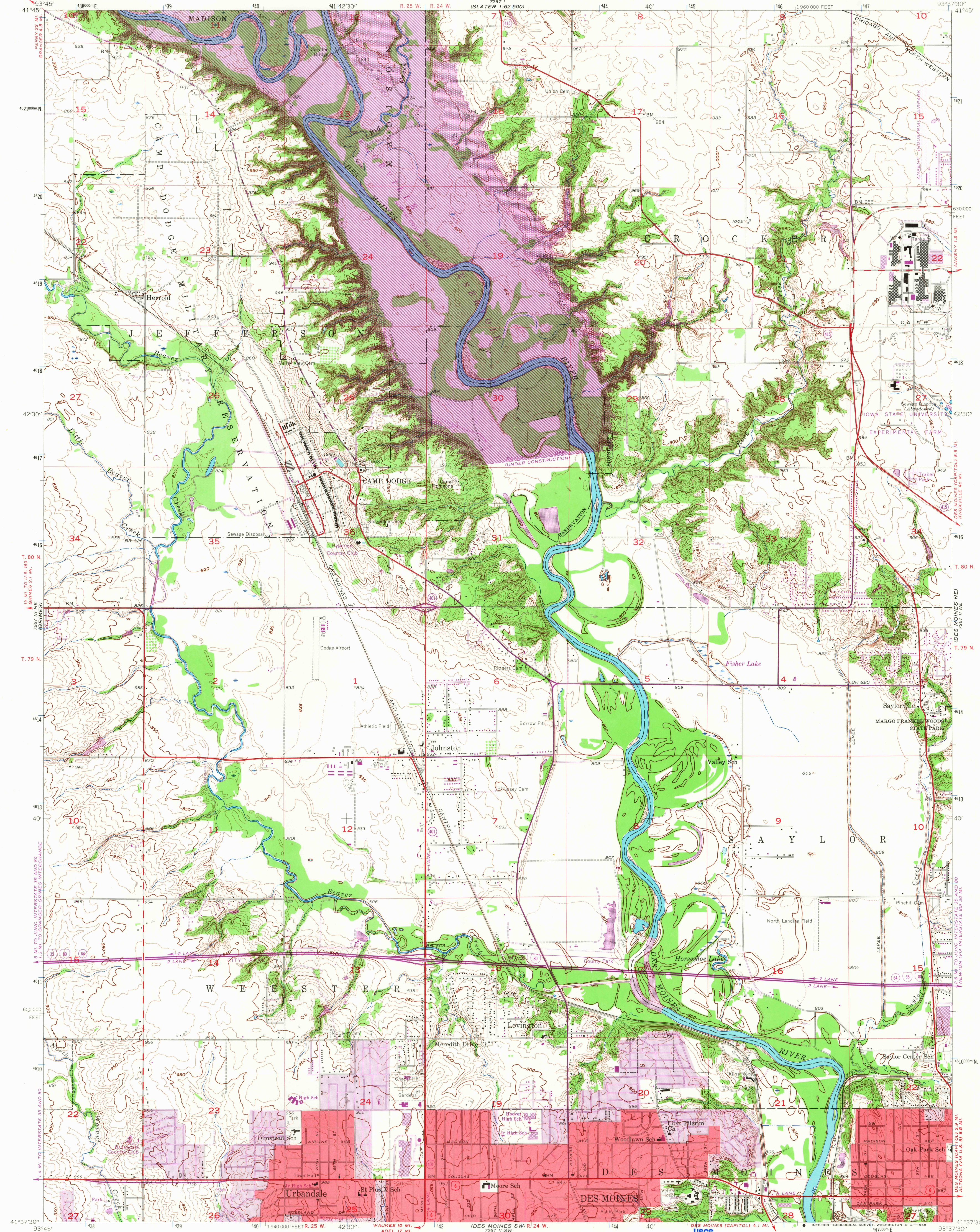
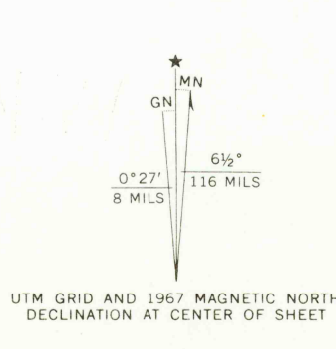


UNITED STATES  
DEPARTMENT OF THE INTERIOR  
GEOLOGICAL SURVEY

DES MOINES NW QUADRANGLE  
IOWA—POLK CO.  
7.5 MINUTE SERIES (TOPOGRAPHIC)  
NW 1/4 DES MOINES 15' QUADRANGLE



Mapped, edited, and published by the Geological Survey  
in cooperation with Polk County and City of Des Moines  
Control by USGS, USC&GS, and Iowa Geodetic Survey  
Topography from aerial photographs by Kelsch plotter  
Aerial photographs taken 1956. Field check 1956  
Polyconic projection. 1927 North American datum.  
10,000-foot grid based on Iowa coordinate system, south zone  
1000-meter Universal Transverse Mercator grid ticks,  
zone 15, shown in blue  
Red tint indicates areas in which only  
landmark buildings are shown  
Revisions shown in purple compiled from aerial photographs  
taken 1967. This information not field checked  
Purple tint indicates extension of urban areas



THIS MAP COMPLIES WITH NATIONAL MAP ACCURACY STANDARDS  
FOR SALE BY U. S. GEOLOGICAL SURVEY, DENVER, COLORADO 80225 OR WASHINGTON, D. C. 20242  
AND BY THE IOWA GEOLOGICAL SURVEY, IOWA CITY, IOWA 52240  
A FOLDER DESCRIBING TOPOGRAPHIC MAPS AND SYMBOLS IS AVAILABLE ON REQUEST

USGS  
Historical File  
Topographic Division  
FILE COPY  
TOPOGRAPHIC DIVISION  
IOWA

ROAD CLASSIFICATION  
Heavy-duty ——— Light-duty ———  
Medium-duty ——— Unimproved dirt ———  
Interstate Route ——— U. S. Route ——— State Route ———

DES MOINES NW, IOWA  
NW 1/4 DES MOINES 15' QUADRANGLE  
N4137.5—W9337.5/7.5  
1956  
PHOTOREVISED 1967  
AMS 7267 II NW—SERIES V876

Purple hatching indicates area to be submerged  
by Saylorville Reservoir  
Area covered by dashed purple pattern  
is subject to controlled inundation

2830  
MAR 1 1968