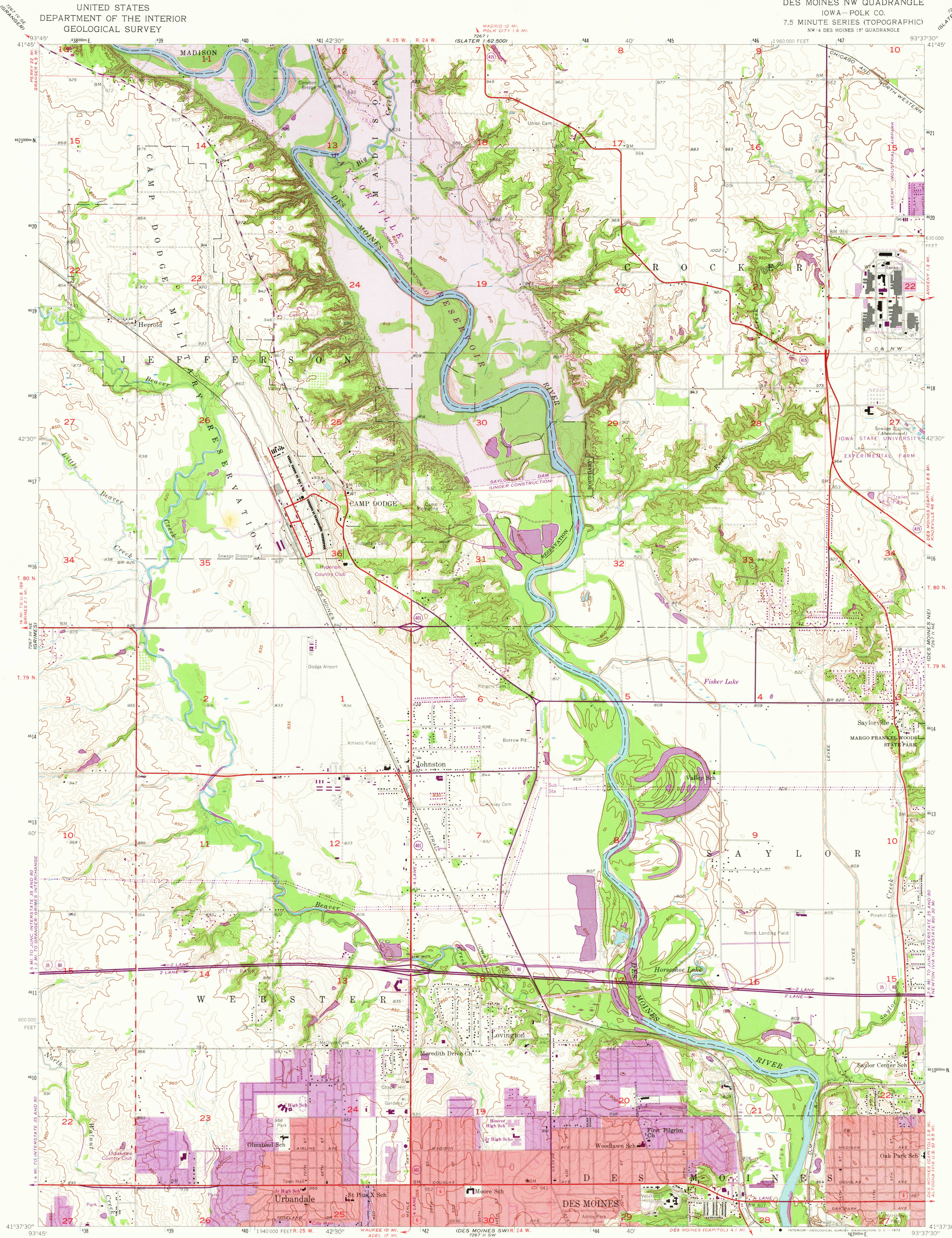
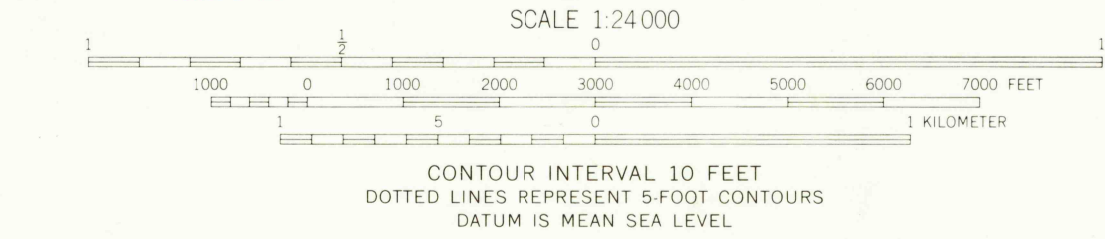
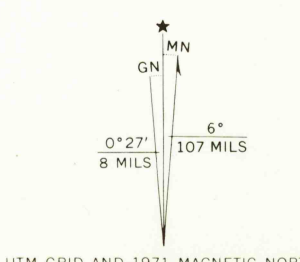


UNITED STATES
DEPARTMENT OF THE INTERIOR
GEOLOGICAL SURVEY

DES MOINES NW QUADRANGLE
IOWA—POLK CO.
7.5 MINUTE SERIES (TOPOGRAPHIC)
NW 4 DES MOINES 15' QUADRANGLE



Mapped, edited, and published by the Geological Survey
in cooperation with Polk County and City of Des Moines
Control by USGS, USC&GS, and Iowa Geodetic Survey
Topography from aerial photographs by Kelsh plotter
Aerial photographs taken 1956. Field check 1956
Polyconic projection. 1927 North American datum
10,000-foot grid based on Iowa coordinate system, south zone
1000-meter Universal Transverse Mercator grid ticks,
zone 15, shown in blue
Red tint indicates areas in which only
landmark buildings are shown
Revisions shown in purple compiled from aerial photographs
taken 1967 and 1971. This information not field checked
Purple tint indicates extension of urban areas



THIS MAP COMPLIES WITH NATIONAL MAP ACCURACY STANDARDS
FOR SALE BY U.S. GEOLOGICAL SURVEY, DENVER, COLORADO 80225 OR WASHINGTON, D. C. 20242
AND BY THE IOWA GEOLOGICAL SURVEY, IOWA CITY, IOWA 52240
A FOLDER DESCRIBING TOPOGRAPHIC MAPS AND SYMBOLS IS AVAILABLE ON REQUEST

ROAD CLASSIFICATION
Heavy-duty ——— Light-duty ———
Medium-duty ——— Unimproved dirt ———
Interstate Route U.S. Route State Route
DES MOINES NW, IOWA
NW 4 DES MOINES 15' QUADRANGLE
N4137.5—W9337.5/7.5
1956
PHOTOREVISED 1967 AND 1971
AMS 7267 II NW—SERIES V876

USGS
HISTORICAL FILE
TOPOGRAPHIC DIVISION
DEC 10 1972