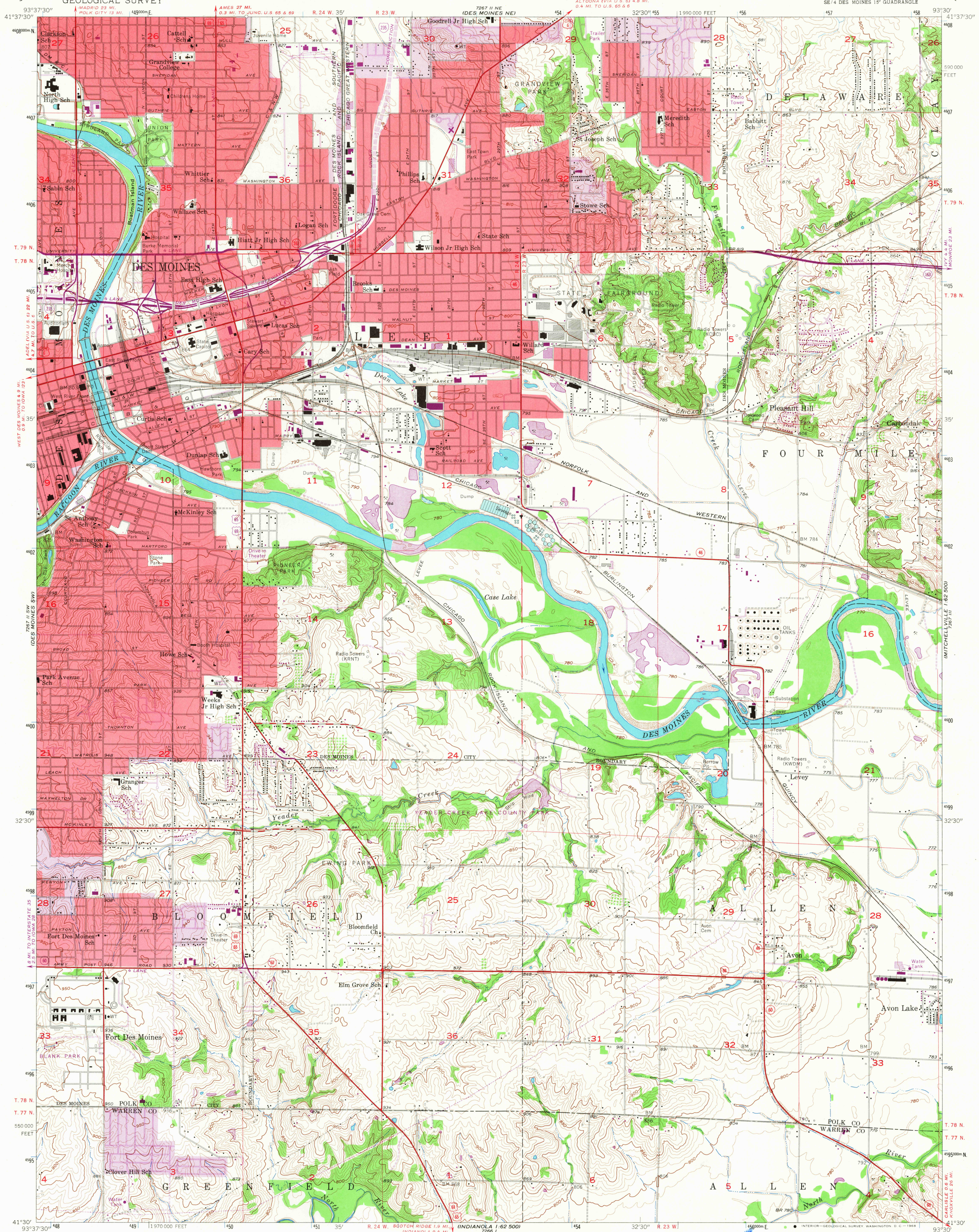


UNITED STATES
DEPARTMENT OF THE INTERIOR
GEOLOGICAL SURVEY

DES MOINES SE QUADRANGLE
IOWA
7.5 MINUTE SERIES (TOPOGRAPHIC)
SE 1/4 DES MOINES 15' QUADRANGLE



Mapped, edited, and published by the Geological Survey in cooperation with Polk County and City of Des Moines

Control by USGS, USC&GS, and Iowa Geodetic Survey

Topography from aerial photographs by Kelsh plotter

Aerial photographs taken 1956. Field check 1956

Polyconic projection. 1927 North American datum

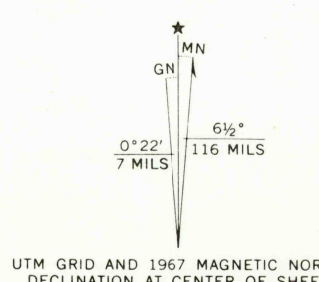
10,000-foot grid based on Iowa coordinate system, south zone

1000-meter Universal Transverse Mercator grid ticks, zone 15, shown in blue

Red tint indicates areas in which only landmark buildings are shown

Revisions shown in purple compiled from aerial photographs taken 1967. This information not field checked

Purple tint indicates extension of urban areas



SCALE 1:24,000
1000 0 1000 2000 3000 4000 5000 6000 7000 FEET
0 1 2 3 4 5 6 7 8 9 10 KILOMETER

CONTOUR INTERVAL 10 FEET

DOTTED LINES REPRESENT 5-FOOT CONTOURS

DATUM IS MEAN SEA LEVEL

THIS MAP COMPLIES WITH NATIONAL MAP ACCURACY STANDARDS

FOR SALE BY U.S. GEOLOGICAL SURVEY, DENVER, COLORADO 80225 OR WASHINGTON, D. C. 20242

AND BY THE IOWA GEOLOGICAL SURVEY, IOWA CITY, IOWA 52240

A FOLDER DESCRIBING TOPOGRAPHIC MAPS AND SYMBOLS IS AVAILABLE ON REQUEST

USGS
Historical File
Topographic Division

USGS
FILE COPY
TOPOGRAPHIC DIVISION

ROAD CLASSIFICATION
Heavy-duty ——— Light-duty ———
Medium-duty ——— Unimproved dirt ———
○ Interstate Route □ U.S. Route ○ State Route

DES MOINES SE, IOWA

SE 1/4 DES MOINES 15' QUADRANGLE

N4130—W9330/7.5

1956

PHOTOREVISED 1967

AMS 7267 II SE—SERIES V876

2755

FEB 20 1968