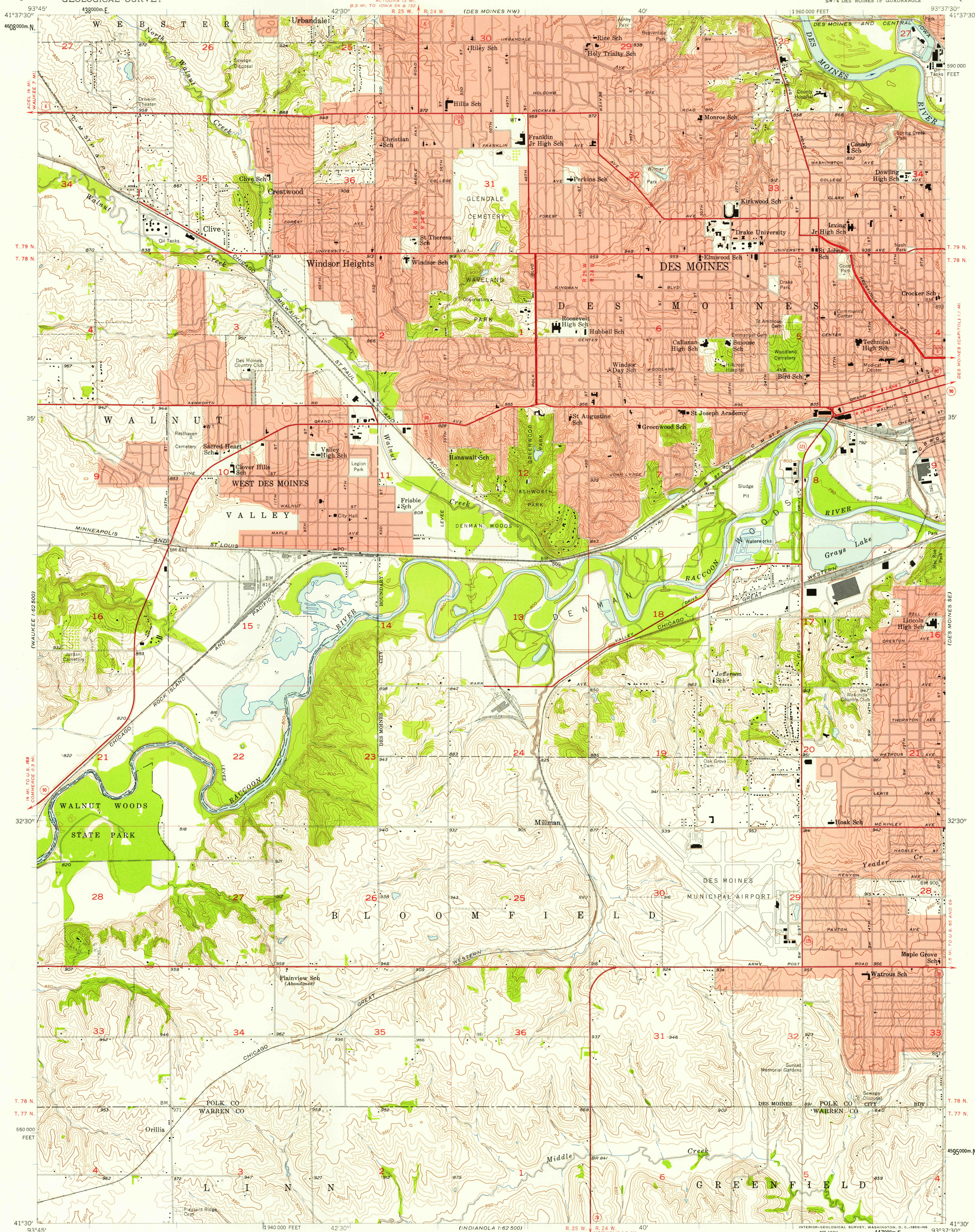


UNITED STATES  
DEPARTMENT OF THE INTERIOR  
GEOLOGICAL SURVEY

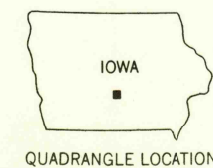
DES MOINES SW QUADRANGLE  
IOWA  
7.5 MINUTE SERIES (TOPOGRAPHIC)  
SW 4 DES MOINES 15' QUADRANGLE



Mapped, edited, and published by the Geological Survey  
in cooperation with Polk County and City of Des Moines  
Control by USGS, USC&GS, and Iowa Geodetic Survey  
Topography from aerial photographs by Keith plotter  
Aerial photographs taken 1956. Field check 1956  
Polyconic projection. 1927 North American datum  
10,000-foot grid based on Iowa coordinate system, south zone  
1000-meter Universal Transverse Mercator grid ticks,  
zone 15, shown in blue  
Red tint indicates areas in which only  
landmark buildings are shown  
City boundaries of Des Moines, West Des Moines, Clive,  
Urbandale, and Windsor Heights are in litigation

SCALE 1:24,000  
1 0 1000 2000 3000 4000 5000 6000 7000 FEET  
1 5 0 5 10 KILOMETER  
CONTOUR INTERVAL 10 FEET  
DATUM IS MEAN SEA LEVEL  
THIS MAP COMPLIES WITH NATIONAL MAP ACCURACY STANDARDS  
FOR SALE BY U. S. GEOLOGICAL SURVEY, DENVER 2, COLORADO OR WASHINGTON 25, D. C.  
AND BY THE IOWA GEOLOGICAL SURVEY, IOWA CITY, IOWA  
A FOLDER DESCRIBING TOPOGRAPHIC MAPS AND SYMBOLS IS AVAILABLE ON REQUEST

USGS  
Historical File  
Topographic Division



ROAD CLASSIFICATION  
Heavy-duty ——— Light-duty ———  
Medium-duty ——— Unimproved dirt ———  
U. S. Route ——— State Route ———

U.S.G.S  
FILE COPY  
TOPOGRAPHIC DIVISION

DES MOINES SW, IOWA  
SW 4 DES MOINES 15' QUADRANGLE  
N 4130 — W 9337.5/7.5

1956

MAR - 6 1958

3820