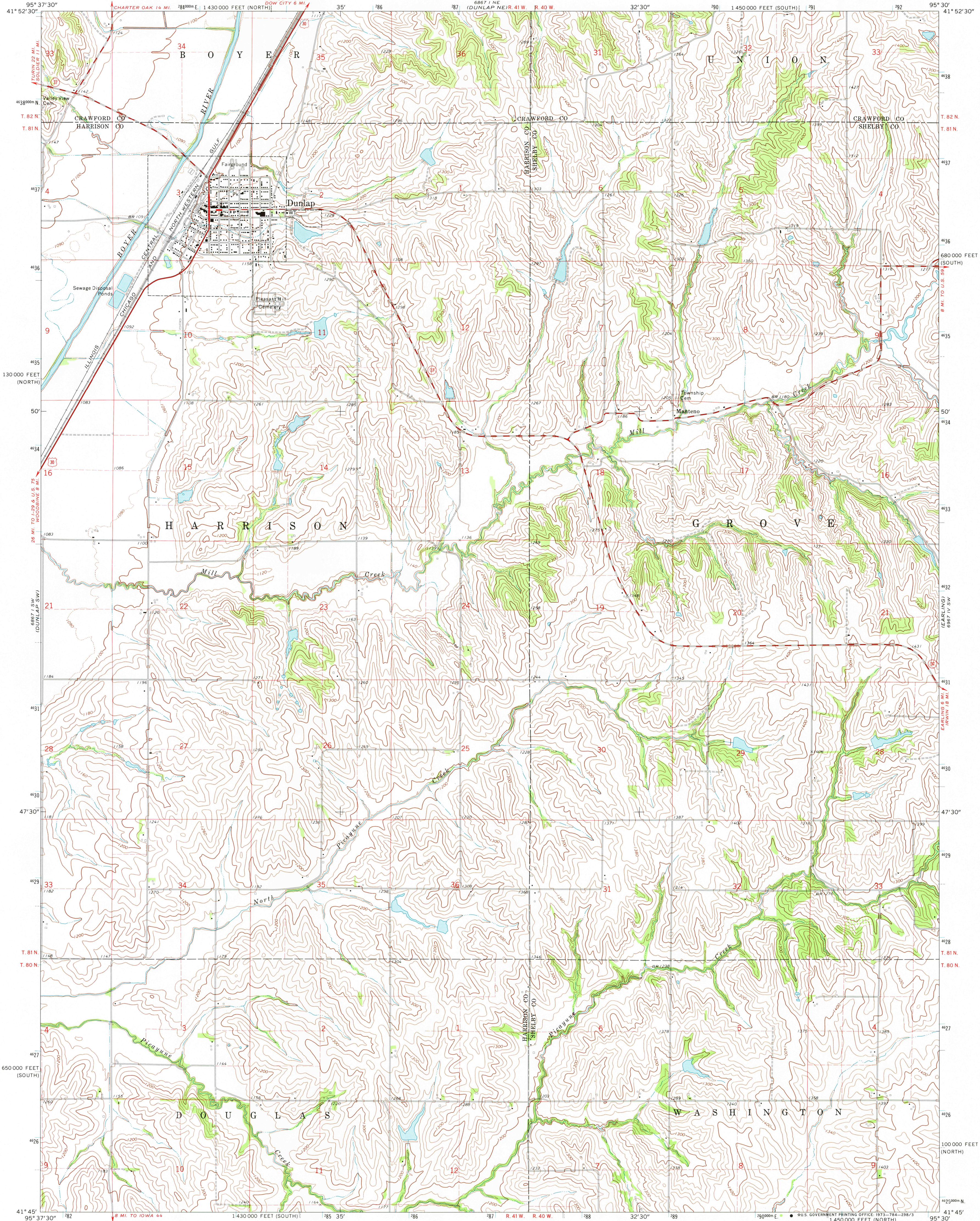


UNITED STATES  
DEPARTMENT OF THE INTERIOR  
GEOLOGICAL SURVEY

DUNLAP QUADRANGLE  
IOWA  
7.5 MINUTE SERIES (TOPOGRAPHIC)



Mapped, edited, and published by the Geological Survey as part of the Department of the Interior program for the development of the Missouri River Basin Control by USGS and USC&GS

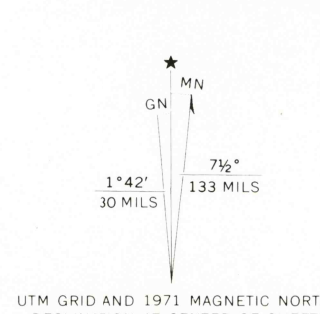
Topography by photogrammetric methods from aerial photographs taken 1971. Field checked 1971

Projection: Iowa coordinate system, south zone (Lambert conformal conic)

10,000-foot grid ticks based on Iowa coordinate system, south and north zones

1000-meter Universal Transverse Mercator grid ticks, zone 15, shown in blue. 1927 North American datum

Fine red dashed lines indicate selected fence and field lines where generally visible on aerial photographs. This information is unchecked



SCALE 1:24,000

CONTOUR INTERVAL 20 FEET  
DOTTED LINES REPRESENT 10-FOOT CONTOURS  
DATUM IS MEAN SEA LEVEL

THIS MAP COMPLIES WITH NATIONAL MAP ACCURACY STANDARDS  
FOR SALE BY U. S. GEOLOGICAL SURVEY, DENVER, COLORADO 80225, OR WASHINGTON, D. C. 20242  
AND BY THE IOWA GEOLOGICAL SURVEY, IOWA CITY, IOWA 52242  
A FOLDER DESCRIBING TOPOGRAPHIC MAPS AND SYMBOLS IS AVAILABLE ON REQUEST

ROAD CLASSIFICATION

Primary highway, hard surface ————— Light duty road, hard or improved surface —————

Secondary highway, hard surface ————— Unimproved road —————

○ Interstate Route ○ U. S. Route ○ State Route

MAR 2 2 1974

USGS  
Historical File  
Topographic Division

DUNLAP, IOWA  
N4145-W9530/7.5

1971

AMS 6867 1 SE—SERIES V876

Dunlap  
2500  
50 years