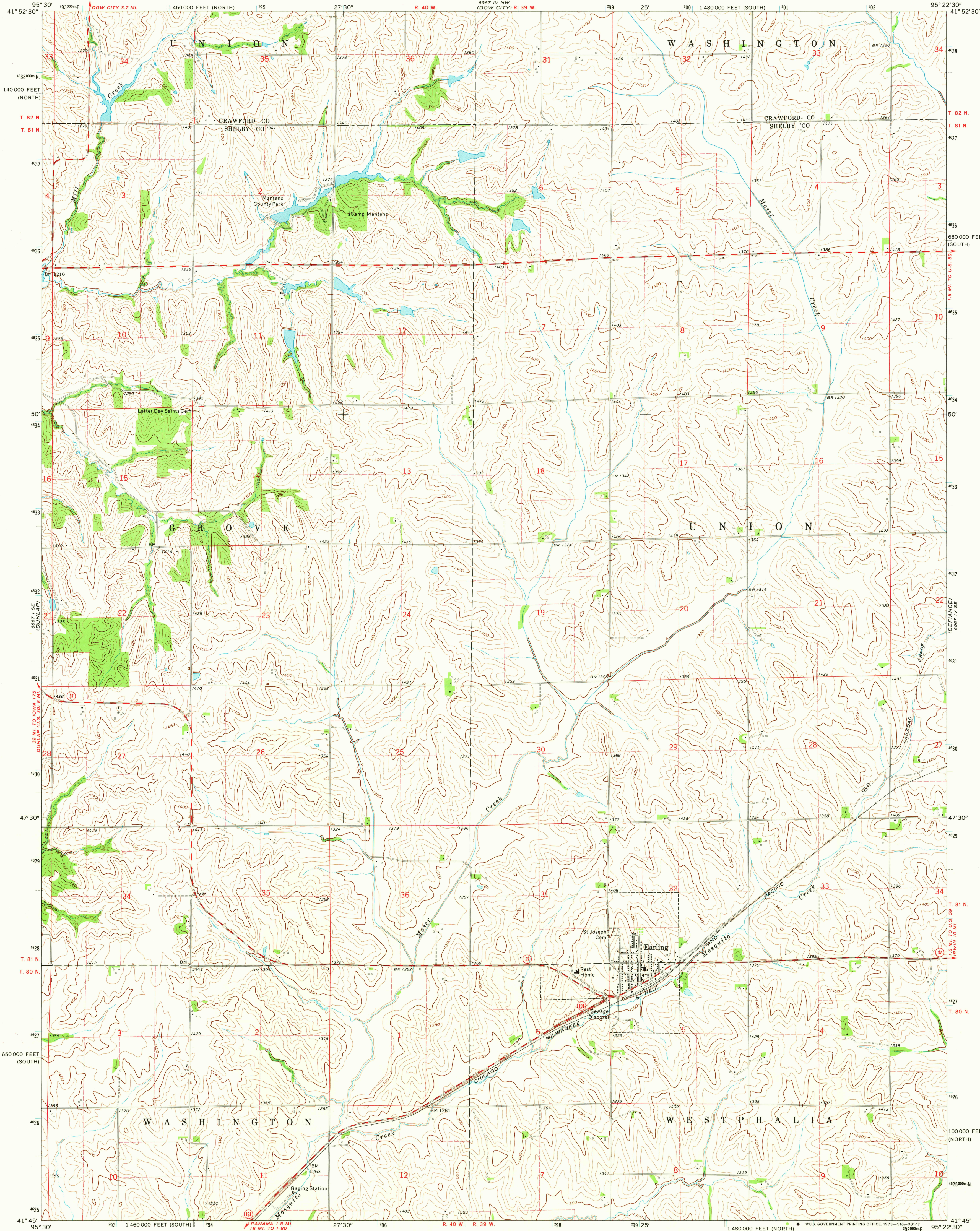
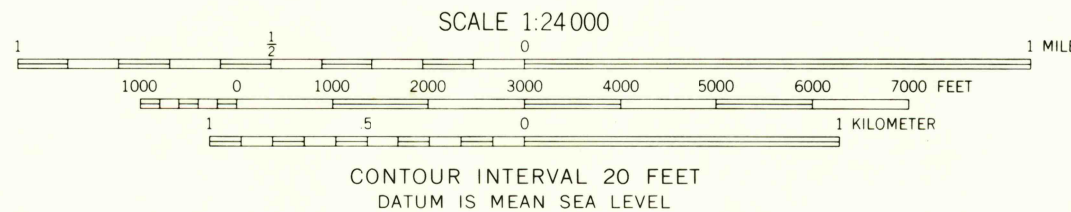
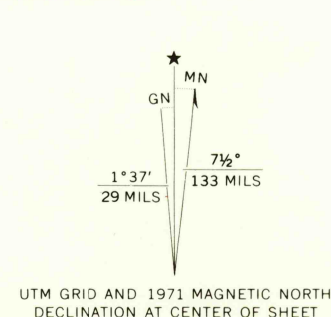


UNITED STATES  
DEPARTMENT OF THE INTERIOR  
GEOLOGICAL SURVEY

EARLING QUADRANGLE  
IOWA  
7.5 MINUTE SERIES (TOPOGRAPHIC)



Mapped, edited, and published by the Geological Survey as part of the Department of the Interior program for the development of the Missouri River Basin Control by USGS and USC&GS  
Topography by photogrammetric methods from aerial photographs taken 1971. Field checked 1971  
Polyconic projection. 1927 North American datum 10,000-foot grids based on Iowa coordinate system, south and north zones  
1000-meter Universal Transverse Mercator grid ticks, zone 15, shown in blue  
Fine red dashed lines indicate selected fence and field lines where generally visible on aerial photographs. This information is unchecked



THIS MAP COMPLIES WITH NATIONAL MAP ACCURACY STANDARDS  
FOR SALE BY U.S. GEOLOGICAL SURVEY, DENVER, COLORADO 80225, OR WASHINGTON, D.C. 20242  
AND BY THE IOWA GEOLOGICAL SURVEY, IOWA CITY, IOWA 52240  
A FOLDER DESCRIBING TOPOGRAPHIC MAPS AND SYMBOLS IS AVAILABLE ON REQUEST



ROAD CLASSIFICATION  
Primary highway, hard surface  
Secondary highway, hard surface  
Unimproved road  
Light-duty road, hard or improved surface  
Interstate Route  
U. S. Route  
State Route

USGS  
Historical File  
Topographic Division

AUG 3 1973  
EARLING, IOWA  
N4145-W9522.5/7.5

1971  
AMS 6967 IV SW-SERIES V876

Hoer  
2500  
50 p/line