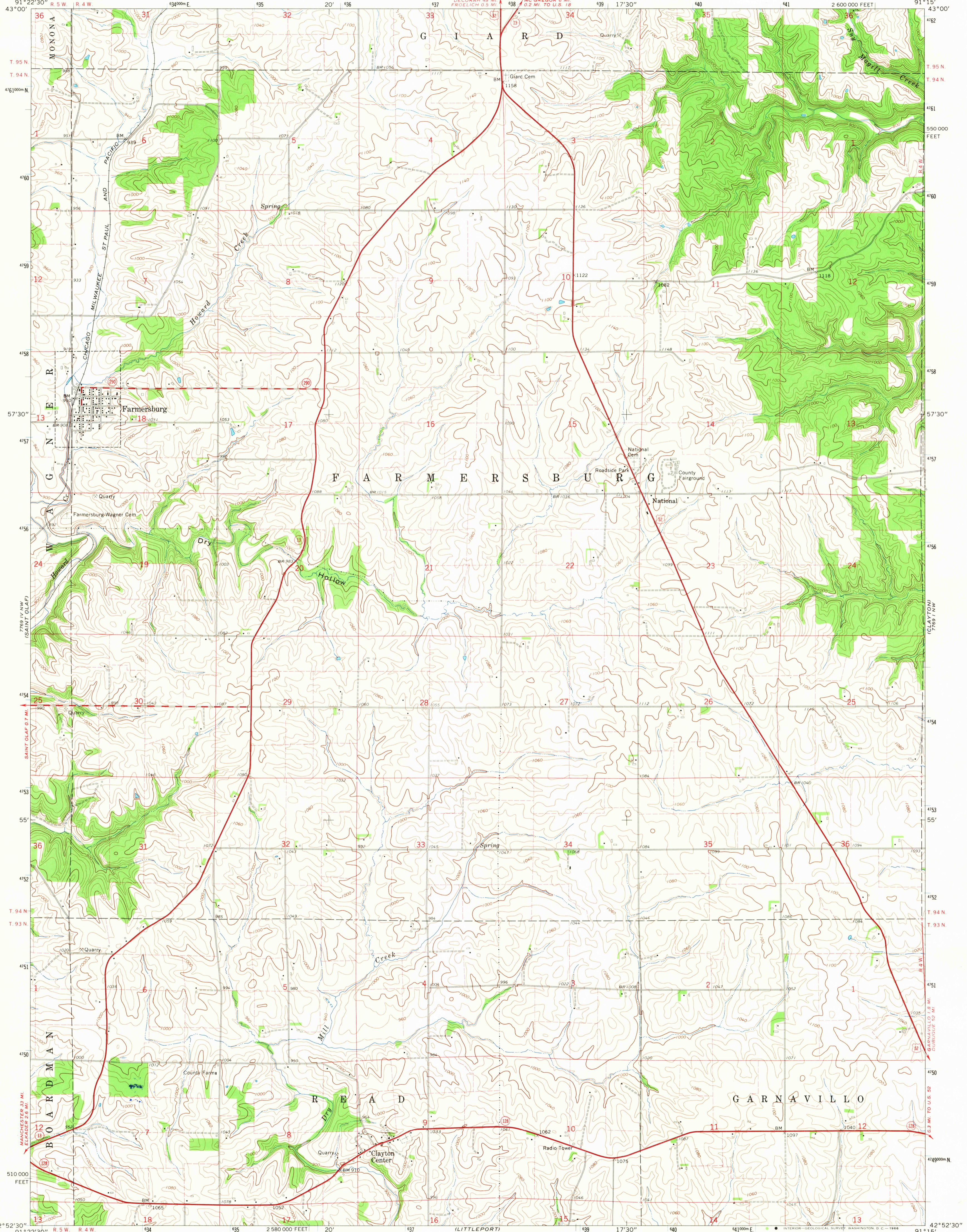
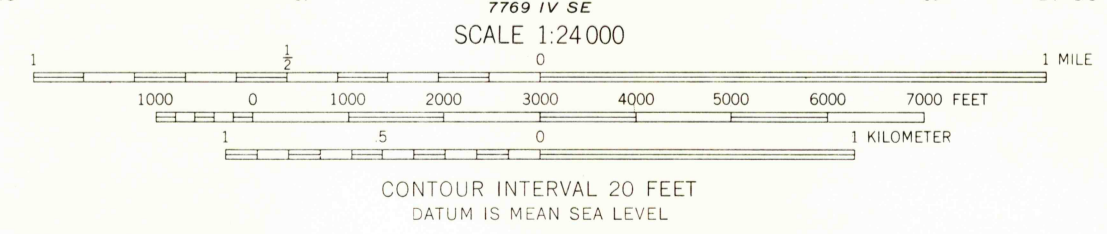
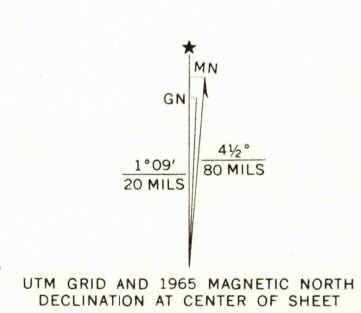


7770 II  
1:52,500  
PRAIRIE DU CHIEN

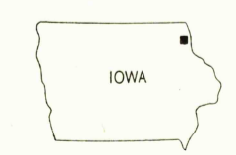


Mapped, edited, and published by the Geological Survey  
Control by USGS and USC&GS  
Topography by photogrammetric methods from aerial  
photographs taken 1963. Field checked 1965  
Polyconic projection. 1927 North American datum  
10,000-foot grid based on Iowa coordinate system, north zone  
1000-meter Universal Transverse Mercator grid ticks,  
zone 15, shown in blue  
Fine red dashed lines indicate selected fence and field lines where  
generally visible on aerial photographs  
This information is unchecked



USGS  
Historical File  
Topographic Division

ROAD CLASSIFICATION	
Heavy-duty	Light-duty
Medium-duty	Unimproved dirt
U.S. Route	State Route



THIS MAP COMPLIES WITH NATIONAL MAP ACCURACY STANDARDS  
FOR SALE BY U.S. GEOLOGICAL SURVEY, DENVER, COLORADO 80225, OR WASHINGTON, D. C. 20242  
AND BY THE IOWA GEOLOGICAL SURVEY, IOWA CITY, IOWA 52240  
A FOLDER DESCRIBING TOPOGRAPHIC MAPS AND SYMBOLS IS AVAILABLE ON REQUEST

U.S.G.S. FARMERSBURG, IOWA  
N4252.5-W9115.7.5  
1965  
AMS 7769 IV NE-SERIES V876  
TOPOGRAPHIC DIVISION

2680  
1967