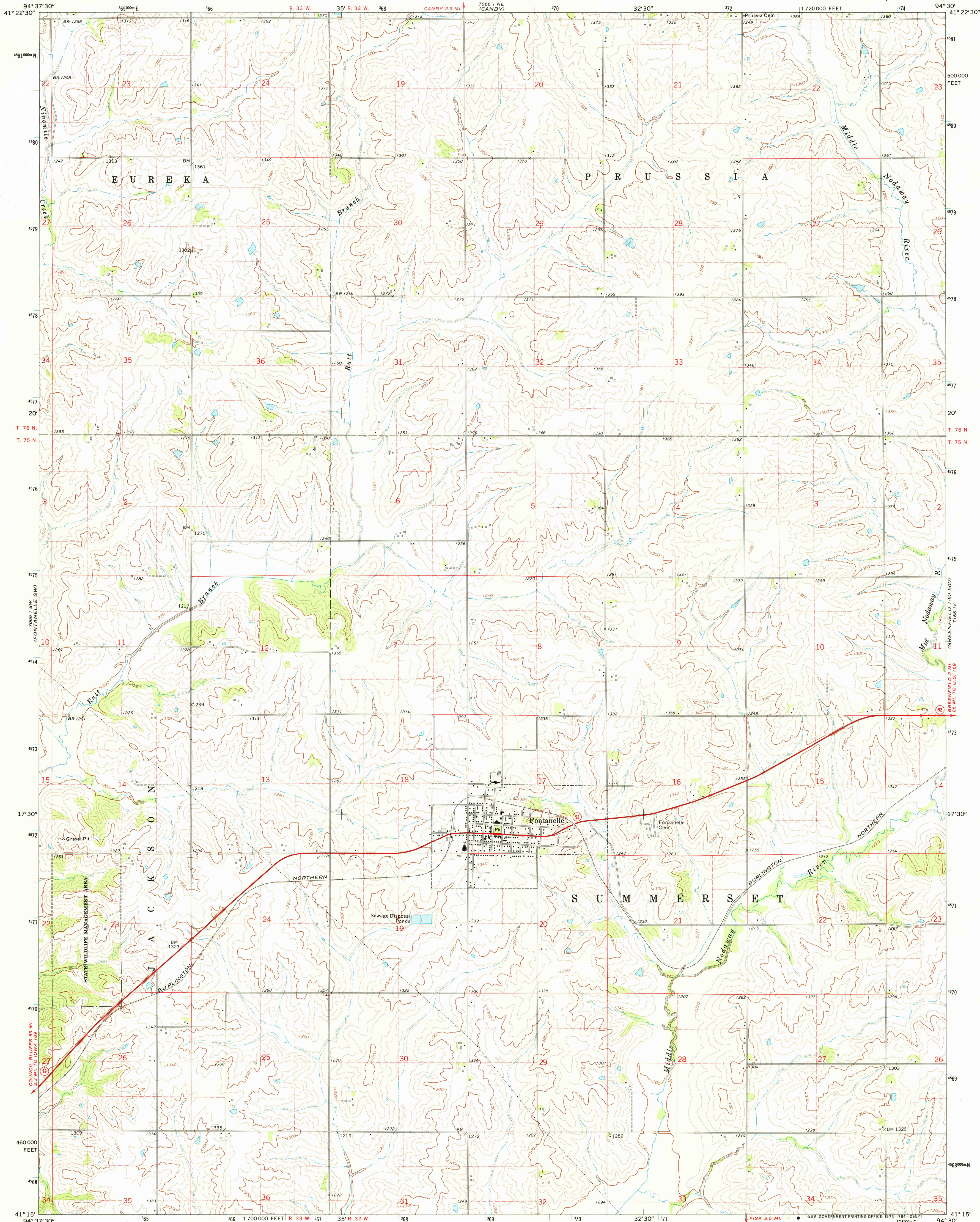


UNITED STATES
DEPARTMENT OF THE INTERIOR
GEOLOGICAL SURVEY

FONTANELLE QUADRANGLE
IOWA—ADAIR CO.
7.5 MINUTE SERIES (TOPOGRAPHIC)

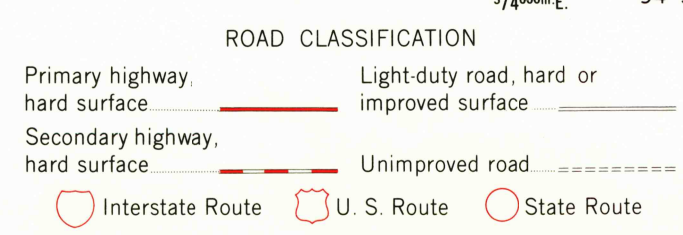
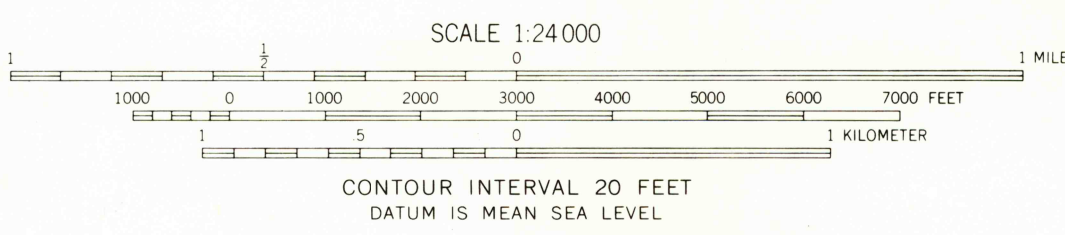
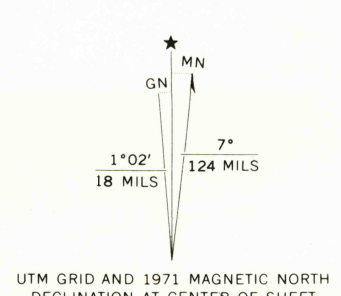


Mapped, edited, and published by the Geological Survey
Control by USGS and USC&GS

Topography by photogrammetric methods from aerial
photographs taken 1966. Field checked 1971

Polycyclic projection, 1927 North American datum
10,000-foot grid based on Iowa coordinate system, south zone
1000-meter Universal Transverse Mercator grid ticks,
zone 15, shown in blue

Fine red dashed lines indicate selected fence and field lines where
generally visible on aerial photographs. This information is unchecked



USGS
Current File
Topographic Division

FONTANELLE, IOWA
N4115-W9430/7.5
1971

AMS 7066 I SE—SERIES V876

DEC 10 1973
Dingerson
2500
50 plane