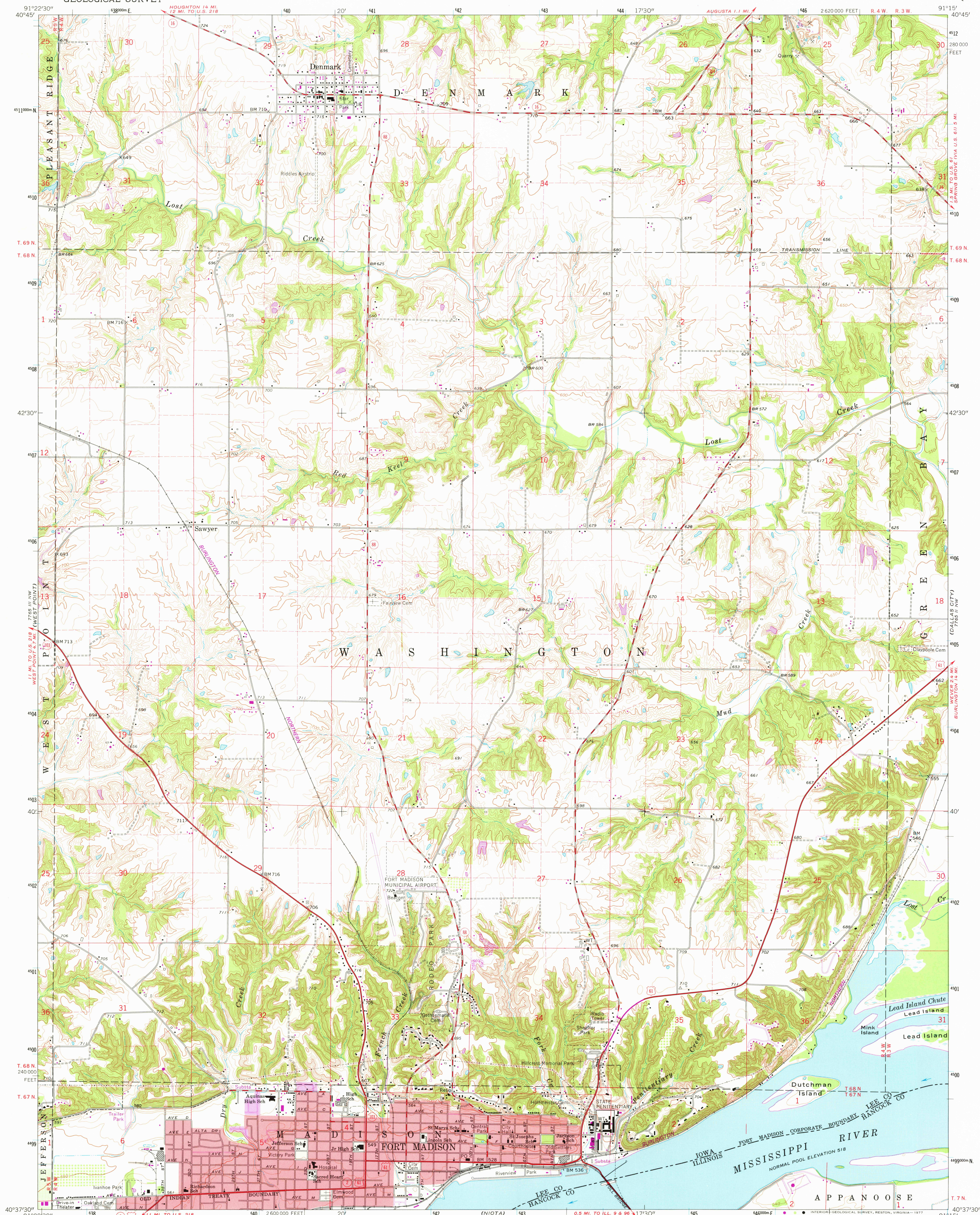


UNITED STATES
DEPARTMENT OF THE INTERIOR
GEOLOGICAL SURVEY

FORT MADISON QUADRANGLE
IOWA-ILLINOIS
7.5 MINUTE SERIES (TOPOGRAPHIC)

7765 III NW
(WEST BURLINGTON)



Mapped, edited, and published by the Geological Survey
Control by USGS and USC&GS

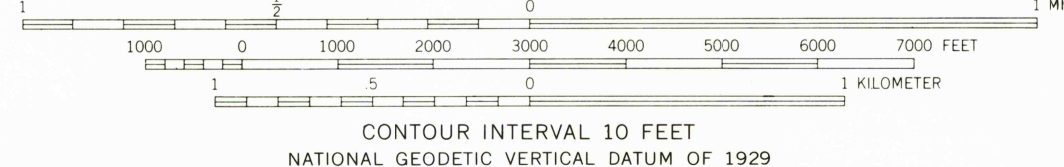
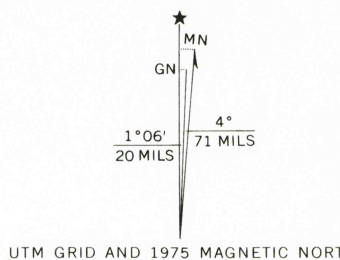
Topography by photogrammetric methods from aerial
photographs taken 1962. Field checked 1964

Polyconic projection. 1927 North American datum
10,000-foot grid based on Iowa coordinate system, south zone
1000-meter Universal Transverse Mercator grid ticks,
zone 15, shown in blue

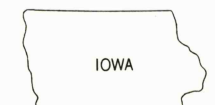
Red tint indicates area in which only landmark buildings are shown
Fine red dashed lines indicate selected fence and field lines where
generally visible on aerial photographs. This information is unchecked

Revisions shown in purple compiled from aerial photographs
taken 1975. This information not field checked

Purple tint indicates extension of urban areas



THIS MAP COMPLIES WITH NATIONAL MAP ACCURACY STANDARDS
FOR SALE BY U.S. GEOLOGICAL SURVEY, DENVER, COLORADO 80225, OR RESTON, VIRGINIA 22092
IOWA GEOLOGICAL SURVEY, IOWA CITY, IOWA 52240
AND STATE GEOLOGICAL SURVEY, URBANA, ILLINOIS 61801
A FOLDER DESCRIBING TOPOGRAPHIC MAPS AND SYMBOLS IS AVAILABLE ON REQUEST



ROAD CLASSIFICATION
Heavy-duty ——— Light-duty ———
Medium-duty ——— Unimproved dirt ———
U.S. Route ——— State Route ———

FORT MADISON, IOWA-ILL.

USGS
Historical File
Topographic Division

N4037.5—W9115/7.5
1964
PHOTOREVISED 1975
AMS 7765 III NE—SERIES V876

FEB 17 1978

2,680