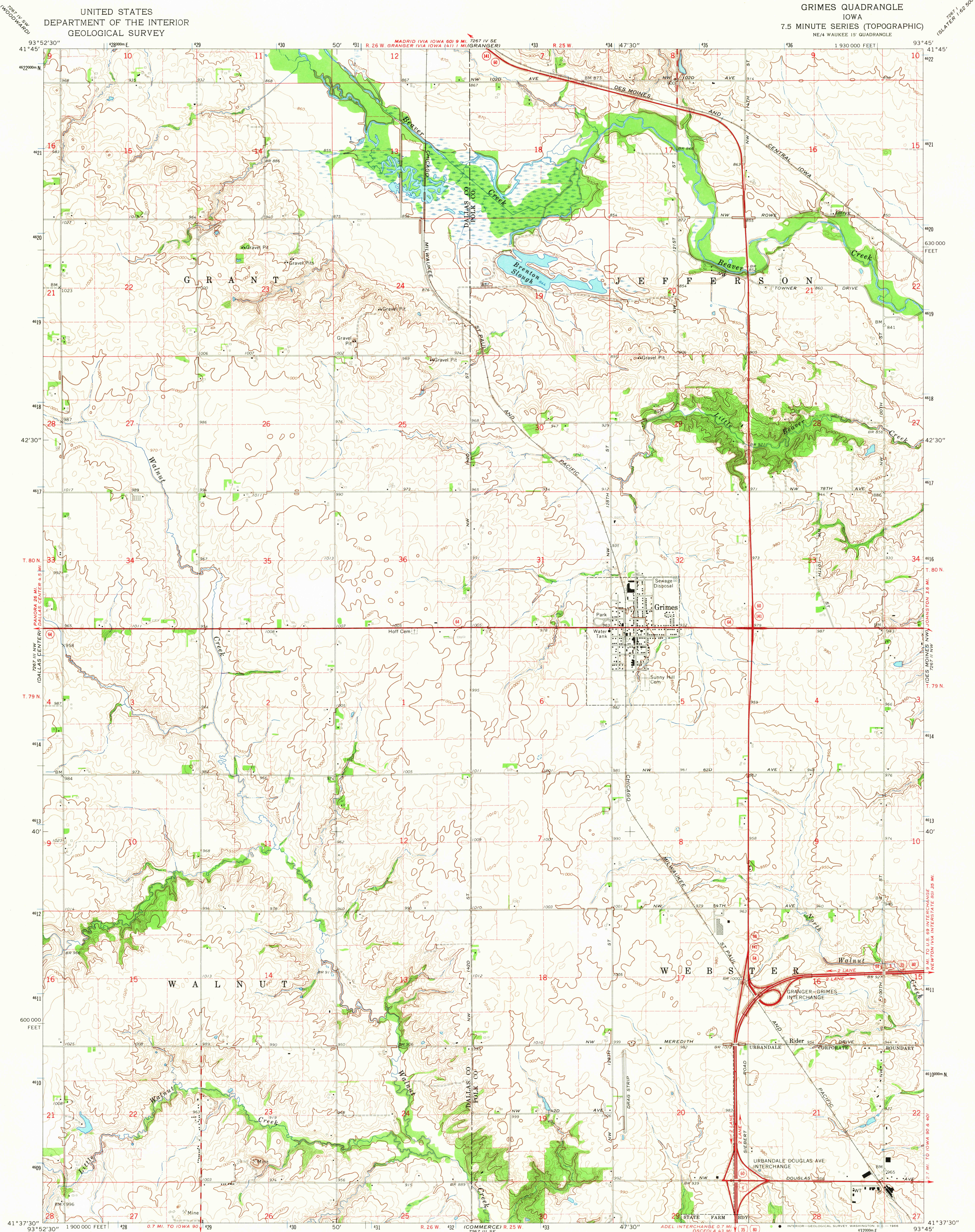


UNITED STATES
DEPARTMENT OF THE INTERIOR
GEOLOGICAL SURVEY

GRIMES QUADRANGLE
IOWA
7.5 MINUTE SERIES (TOPOGRAPHIC)
NE 1/4 WAUKEE 15' QUADRANGLE
N 4137.5—W 9345.7/5



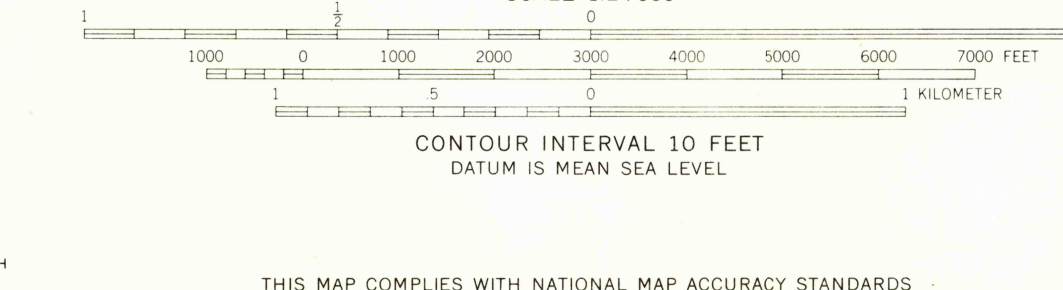
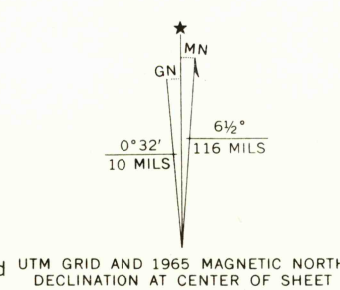
Maped, edited, and published by the Geological Survey

Control by USGS and USC&GS

Topography by photogrammetric methods from aerial
photographs taken 1963. Field checked 1965

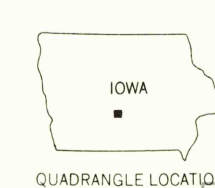
Polyconic projection. 1927 North American datum
10,000-foot grid based on Iowa coordinate system, south zone
1000-meter Universal Transverse Mercator grid ticks,
zone 15, shown in blue

Fine red dashed lines indicate selected fence and field lines where
generally visible on aerial photographs. This information is unchecked



USGS
Historical File
Topographic Division

ROAD CLASSIFICATION
Heavy-duty ——— Light-duty ———
Medium-duty ——— Unimproved dirt ———
Interstate Route U.S. Route State Route



U.S.G.S.

GRIMES, IOWA
NE 1/4 WAUKEE 15' QUADRANGLE
N 4137.5—W 9345.7/5

1955

AMS 7267 III NE—SERIES V876

THIS MAP COMPLIES WITH NATIONAL MAP ACCURACY STANDARDS
FOR SALE BY U. S. GEOLOGICAL SURVEY, DENVER, COLORADO 80225 OR WASHINGTON, D. C. 20242
AND BY THE IOWA GEOLOGICAL SURVEY, IOWA CITY, IOWA
A FOLDER DESCRIBING TOPOGRAPHIC MAPS AND SYMBOLS IS AVAILABLE ON REQUEST

TOPOGRAPHIC DIVISION

2255

007 3 1966